



Katherine Poole-Fournier  
Designer



KNIT | SKILL LEVEL: INTERMEDIATE

## ABBREVIATIONS

**Alt** = Alternate(ing)

**Beg** = Beginning

**C4B** = Slip next 2 stitches onto cable needle and leave at back of work. K2, then K2 from cable needle.

**C4F** = Slip next 2 stitches onto cable needle and leave at front of work. K2, then K2 from cable needle.

**Cont** = Continue(ity)

**K** = Knit

**Kfb** = Increase 1 stitch by knitting into front and back of next stitch

**K2tog** = Knit next 2 stitches together

**M1L** = Make 1 stitch by picking up horizontal loop lying before next stitch from front to back of loop

**M1R** = Make 1 stitch by picking up horizontal loop lying before next stitch from back to front of loop

**P** = Purl

**Pat** = Pattern

**P2tog** = Purl next 2 stitches together

**P2togtbl** = Purl next 2 stitches together through the back loops

**Rem** = Remain(ing)(s)

**Rep** = Repeat

**RS** = Right side

**S11Pwyib** = Slip next stitch purlwise with yarn in back of work

**S11Pwyif** = Slip next stitch purlwise with yarn in front of work

**Ssk** = Slip next 2 stitches knitwise one at a time. Pass them

back onto left-hand needle, then knit through back loops together

**St(s)** = Stitch(es)

**WS** = Wrong side

## MATERIALS

Patons® Highland Bulky™ (3.5 oz/100 g; 83 yds/76 m)

<b>Sizes</b>	<b>XS/S</b>	<b>M</b>	<b>L</b>	<b>XL</b>	<b>2/3XL</b>	<b>4/5XL</b>	
Pecan (13002)	<b>10</b>	<b>11</b>	<b>12</b>	<b>14</b>	<b>16</b>	<b>18</b>	<b>balls</b>

Sizes U.S. 10½ (6.5 mm) and U.S. 11 (8 mm) circular knitting needles 29" [73.5 cm] long **or sizes needed to obtain gauge.** Cable needle. Stitch markers. Separating zipper 24" [61 cm] long. Yarn needle.

## SIZES

### To fit chest measurement

<b>XS/S</b>	<b>34-36"</b> [86.5-91.5 cm]
<b>M</b>	<b>38-40"</b> [96.5-101.5 cm]
<b>L</b>	<b>42-44"</b> [106.5-111.5 cm]
<b>XL</b>	<b>46-48"</b> [116.5-122 cm]
<b>2/3XL</b>	<b>50-56"</b> [127-142 cm]
<b>4/5XL</b>	<b>58-64"</b> [147.5-162.5 cm]

### Finished chest measurement

<b>XS/S</b>	<b>41"</b> [104 cm]
<b>M</b>	<b>45½"</b> [115.5 cm]
<b>L</b>	<b>49"</b> [124.5 cm]
<b>XL</b>	<b>53"</b> [134.5 cm]
<b>2/3XL</b>	<b>60"</b> [152.5 cm]
<b>4/5XL</b>	<b>66"</b> [167.5 cm]

## GAUGES

11 sts and 14 rows = 4" [10 cm] in stocking st on larger needles.

12 sts and 14 rows = 4" [10 cm] in cable pat on larger needles.

## INSTRUCTIONS

*The instructions are written for smallest size. If changes are necessary for larger size(s) the instructions will be written thus ( ). Numbers for each size are shown in the same color throughout the pattern. When only one number is given in black, it applies to all sizes.*

**Cable Pat I** (worked over 12 sts - see chart on page 4)

**1st row:** (RS). P2. C4B. C4F. P2.

**2nd row:** K2. P8. K2.

**3rd row:** P2. K8. P2.

**4th row:** As 2nd row.

These 4 rows form Cable Pat I.

**Cable Pat II** (worked over 40 sts - see chart on page 4)

**1st row:** (RS). P2. C4B. C4F. P2. (C4B. C4F) twice. P2. C4B. C4F. P2.

**2nd and alt rows:** K2. P8. K2. P16. K2. P8. K2.

**3rd row:** P2. K8. P2. K16. P2. K8. P2.

**5th row:** P2. C4B. C4F. P2. (C4F. C4B) twice. P2. C4B. C4F. P2

**7th row:** As 3rd row.

**8th row:** As 2nd row.

These 8 rows form Cable Pat II.

## BODY

**Note:** Body is worked in one piece to armholes.

With smaller circular needle, cast on **118** (**130-142-154-170-190**) sts. **Do not** join. Working back and forth across needle in rows, proceed as follows:

**1st row:** (RS). K2. \*P2. K2. Rep from \* to end of row.

**2nd row:** Sl1Pwyif. P1. \*K2. P2. Rep from \* to end of row.

**3rd row:** Sl1Pwyib. K1. \*P2. K2. Rep from \* to end of row.

Rep 2nd and 3rd rows 4 times more (11 rows total).

Change to larger circular needle and proceed as follows:

**Next row:** (WS). Sl1Pwyif. P2. K2. P8. K2. **P24** (**30-36-42-50-60**).

K2. P8. K2. P16. K2. P8. K2. **P24** (**30-36-42-50-60**). K2. P8. K2. P3.

**Next row:** (RS.) Sl1Pwyib. K2. Reading rows from right to left on RS rows, and from left to right on WS, work 1st row of Cable Pat I. **K24** (**30-36-42-50-60**). Work 1st row of Cable Pat II. **K24** (**30-36-42-50-60**). Work 1st row of Cable Pat I. K3.

**Next row:** (WS). Sl1Pwyif. P2. Work 2nd row of Cable Pat I. **P24** (**30-36-42-50-60**). Work 2nd row of Cable Pat II. **P24** (**30-36-42-50-60**). Work 2nd row of Cable Pat I. P3.

Charts are now in position. Cont in pat until Body measures 18" [45.5 cm] from beg, ending on a WS row.

## BACK

**Next row:** Pat across first **27** (**30-32-36-38-44**) sts. Cast off next **4** (**4-6-6-8-8**) sts. Place sts just worked onto st holder for Right Front. Pat across next **56** (**62-66-70-78-86**) sts (including rem st from cast-off) for Back. Leave rem sts unworked and place on st holder for Left Front.

**Next row:** (WS). **P8** (**11-13-15-19-23**). Work Cable Pat II. **P8** (**11-13-15-19-23**).

**Size XS/S only:** Work 2 rows even in pat.

## Shape raglans:

**Sizes M, L, XL, 2/3XL and 4/5XL only:**

**1st row:** (RS). K1. K2tog. Knit to last 3 sts. ssk. K1. (**60-64-68-76-84**) sts.

**2nd row:** P1. P2togtbl. Purl to last 3 sts. P2tog. P1. (**58-62-66-74-82**) sts.

Rep last 2 rows (**0-1-0-3-4**) time(s) more. (**58-58-66-62-66**) sts.

**All sizes: 1st row:** K1. K2tog. Pat to last 3 sts. ssk. K1. **54 (56-56-64-60-64)** sts.

**2nd row:** Work even in pat. Rep last 2 rows **17 (17-16-19-16-17)** times more. **20 (22-24-26-28-30)** sts rem. Cast off knitwise.

## LEFT FRONT

With RS facing, join yarn to Left Front.

**Next row:** (RS). Cast off first **4 (4-6-6-8-8)** sts. Pat to end of row. **27 (30-32-36-38-44)** sts.

**Next row:** (WS). Work even in pat.

## Shape raglan:

**Sizes M, L, XL, 2/3XL and 4/5XL only:**

**1st row:** (RS). K1. K2tog. Knit to last 3 sts. ssk. K1. **(28-30-34-36-42)** sts

**2nd row:** P1. P2togtbl. Purl to last 3 sts. P2tog. P1. **(26-28-32-34-40)** sts

Rep last 2 rows **(0-0-1-1-2)** time(s) more. **(26-28-28-30-32)** sts.

**All sizes: 1st row:** (RS). K1. K2tog. Pat to end of row. **26 (25-27-27-29-31)** sts.

**2nd row:** Work even in pat. Rep last 2 rows **11 (10-10-10-10-10)** times more, ending on a RS row. **15 (15-17-17-19-21)** sts.

**Next row:** (WS). Cast off **3 (3-5-5-5-5)** sts. Pat to end of row. **12 (12-12-14-14-16)** sts.

**Shape neck: 1st row:** (RS). K1. K2tog. Pat to last 3 sts. ssk. K1. **10 (10-10-12-12-14)** sts.

**2nd row:** Work even in pat. Rep last 2 rows **2 (2-2-3-3-4)** times more. 6 sts.

**Next row:** K1. K2tog. ssk. K1.

**Next row:** P4.

**Next row:** K2tog. ssk.

**Next row:** P2.

**Next row:** K2tog. Fasten off.

## RIGHT FRONT

With WS facing, join yarn to Right Front.

**Next row:** (WS). Pat to end of row.

## Shape raglan:

**Sizes M, L, XL, 2/3XL and 4/5XL only:**

**1st row:** (RS). Pat to last 3 sts. ssk. K1. **(25-27-27-29-31)** sts.

**2nd row:** P1. P2togtbl. Pat to last 3 sts. P2tog. P1. **(26-28-32-34-40)** sts

Rep last 2 rows **(0-0-1-1-2)** time(s) more. **(26-28-28-30-32)** sts.

## All sizes:

**1st row:** (RS). Pat to last 3 sts. ssk. K1. **26 (25-27-27-29-31)** sts.

**2nd row:** (WS). Work even in pat. Rep last 2 rows **11 (10-10-10-10-10)** times more, ending on a WS row. **15 (15-17-17-19-21)** sts.

**Next row:** (RS). Cast off **3 (3-5-5-5-5)** sts. Pat to end of row. **12 (12-12-14-14-16)** sts.

**Next row:** Work even in pat.

**Shape neck: 1st row:** (RS). K1. K2tog. Pat to last 3 sts. ssk. K1. **10 (10-10-12-12-14)** sts.

**2nd row:** Work even in pat. Rep last 2 rows **2 (2-2-3-3-4)** times more. 6 sts.

**Next row:** K1. K2tog. ssk. K1.

**Next row:** P4.

**Next row:** K2tog. ssk.

**Next row:** P2.

**Next row:** K2tog. Fasten off.

## SLEEVES

With smaller circular needle cast on **30 (30-30-34-34-34)** sts. **Do not** join. Working back and forth across needle in rows, proceed as follows:

Work 2" [5 cm] in (K2. P2) ribbing as given for Body.

Change to larger circular needle and proceed in stocking st for 4 rows. Inc 1 st each end of next and every following **6th (4th-4th-4th-4th-4th)** row until there are **46 (48-50-52-56-60)** sts.

Cont even until Sleeve measures **20 (20-19-19-18-18)" [51 (51-48.5-48.5-45.5-45.5) cm]** from beg, ending on a purl row.

**Shape raglans:** Cast off **2 (2-3-3-4-4)** sts beg next 2 rows. **42 (44-44-46-48-52)** sts.

**Size XS/S only:** Work 2 rows even.

**All sizes: 1st row:** K1. K2tog. Knit to last 3 sts. ssk. K1. **40 (42-42-44-46-50)** sts.

**2nd row:** Purl.  
Rep last 2 rows until 6 sts rem.  
Cast off knitwise.

## COLLAR

With smaller circular needle and A, cast on 3 sts.

**1st row:** (RS). Sl1Pwyib. (Kfb) twice. 5 sts.

**2nd row:** Sl1Pwyib. Knit to end of row.

**3rd row:** Sl1Pwyib. Kfb. Knit to last 2 sts. Kfb. K1.

**4th row:** Sl1Pwyib. Knit to end of row.

Rep last 2 rows 8 times more. 23 sts. Place marker at each end of needle.

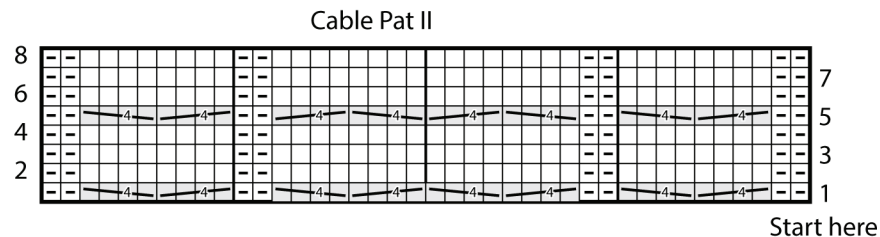
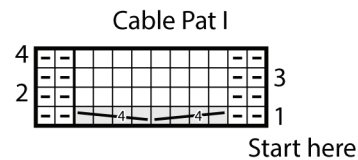
Cont in garter st (knit every row) until Collar from markers measures **16 (16-17-18-18-19)" [40.5 (40.5-43-45.5-45.5-48.5)** cm] (when slightly stretched), ending on a WS row.

**Next row:** Sl1Pwyib. K2tog. Knit to last 2 sts. K2tog.

**Next row:** Sl1Pwyib. Knit to end of row.  
Rep last 2 rows 9 times more. 3 sts. Cast off.

## FINISHING

Pin pieces to measurements and cover with a damp cloth, leaving cloth to dry. Sew raglan seams. Sew sleeve seams. Pin inner edge of Collar to neck edge, having cast on and cast off edges of neck edge and allowing RS of outer edge to be visible when Collar is turned back. Sew zipper in position under edgings. Sew zipper in position under edgings.



## Key

□ = Knit on RS rows. Purl on WS rows

▢ = Purl on RS rows. Knit on WS rows

= C4B

= C4F

