

## BERNAT® VERY SCARY KNIT PULLOVERS



KNIT | SKILL LEVEL: INTERMEDIATE

### ABBREVIATIONS

**Alt** = Alternate  
**Beg** = Begin(ning)  
**Cont** = Continue(ity)  
**Dec** = Decrease(ing)  
**Inc** = Increase(ing)  
**K** = Knit  
**Pat** = Pattern

**Rem** = Remain(ing)  
**Rep** = Repeat  
**RS** = Right side  
**St(s)** = Stitch(es)  
**Tog** = Together  
**WS** = Wrong side

### SIZES

#### To fit chest measurement

**2** 21" [53.5 cm]  
**4** 23" [58.5 cm]  
**6** 25" [63.5 cm]  
**8** 26½" [67.5 cm]

#### Length from shoulder to hem

**2** 25" [63.5 cm]  
**4** 27" [68.5 cm]  
**6** 29½" [75 cm]  
**8** 32½" [82.5 cm]

### GAUGE

18 sts and 24 rows = 4" [10 cm]  
 with larger needles in stocking st.

### INSTRUCTIONS

The instructions are written for smallest size. If changes are necessary for larger sizes the instructions will be written thus (). When only one number is given, it applies to all sizes. For ease in working, circle all numbers pertaining to your size.

### BACK

\*\*With MC and smaller needles, cast on **57 (61-67-73)**sts.

**1st row:** (RS). K1. \*P1. K1. Rep from \* to end of row.

**2nd row:** P1. \*K1. P1. Rep from \* to end of row.

Rep last 2 rows of (K1. P1) ribbing for 2" [5 cm], ending on a 2nd row.\*\*

### MATERIALS

Bernat® Super Value™ (7 oz/197 g; 440 yds/402 m)

**Sizes** 2 4 6 8 years

#### Skull Version

**Main Color (MC)** Black (07421) 1 2 2 2 ball(s)

**Contrast A** White (07391) 1 1 1 1 ball

#### Jack-O'-Lantern Version

**Main Color (MC)** Carrot (00615) 1 2 2 2 ball(s)

**Contrast A** Yellow (07445) 1 1 1 1 ball

Sizes U.S. 7 (4.5 mm) and U.S. 8 (5 mm) knitting needles or size needed to obtain gauge. 2 st holders.

Change to larger needles and proceed in stocking st until work from beg measures **7½ (8-9-11)"** [**19 (20.5-23-28)** cm], ending with a purl row.

**Shape armholes:** Cast off **4 (4-6-6)** sts beg next 2 rows. **49 (53-55-61)** sts.

Cont even until armhole measures **5½ (6-6½-7)"** [**14 (15-16.5-18)** cm], ending with a purl row.

**Shape shoulders:** Cast off **6 (6-6-8)** sts beg next 2 rows, then cast off **6 (7-7-8)** sts beg following 2 rows. Leave rem **25 (27-29-29)** sts on a st holder.

### FRONT

**Note:** When working from chart, wind small balls of the colors to be used, one for each separate area of color in the design. Start new colors at appropriate points. To change colors, twist the two yarns around each other where they meet on WS to avoid a hole. Work from \*\* to \*\* as given for Back.

**Jack-o'-Lantern Version only:** Change to larger needles and proceed in stocking st for **4 (6-10-14)** rows.

**Place chart: 1st row:** (RS). K**9 (11-14-17)**. Work 1st row of Chart I across next 39 sts. Knit to end of row. **2nd row:** P **9 (11-14-17)**. Work 2nd row of Chart I across next 39 sts. Purl to end of row. See Chart I on page 4.

**Skull and Crossbones Version only:** Change to larger needles and proceed in stocking st for **2 (4-8-12)** rows.

**Place chart: 1st row:** (RS). K**10 (12-15-18)**. Work 1st row of Chart II across next 37 sts. Knit to end of row. **2nd row:** P**10 (12-15-18)**. Work 2nd row of Chart II across next 37 sts. Purl to end of row. See Chart II on page 4.

**Both Versions:** Keeping cont of chart, as placed in last 2 rows, cont even until work from beg measures same length as Back to armholes, ending with a purl row.

**Shape armholes:** Cast off **4 (4-6-6)** sts beg next 2 rows. **49 (53-55-61)** sts.

Cont even until armhole measures **3½ (3½-4-4½)"** [**9 (9-10-11.5)** cm], ending with a purl row.

**Shape neck: Next row:** K**18 (20-20-23)** (neck edge). **Turn.** Leave rem sts on a spare needle. Dec 1 st at neck edge on next 4 rows, then on every following alt row **2 (3-3-3)** times. **12 (13-13-16)** sts. Cont even until armhole measures same length as Back to beg of shoulder shaping, ending with a purl row.

**Shape shoulder:** Cast off **6 (6-6-8)** sts beg next row. Work 1 row even. Cast off rem **7 (7-7-8)** sts.

With RS of work facing, slip next **13 (13-15-15)** sts onto a st holder. Join MC to rem sts and knit to end of row. Dec 1 st at neck edge on next 4 rows, then on every following alt row **2 (3-3-3)** times. **12 (13-13-16)** sts. Cont even until armhole measures same length as Back to beg of shoulder shaping, ending with a purl row.

**Shape shoulder:** Cast off **6 (6-6-8)** sts beg next row. Work 1 row even. Cast off rem **7 (7-7-8)** sts.

### SLEEVES

With MC and smaller needles, cast on **33 (35-35-37)** sts. Work 2" [5 cm] in (K1. P1) ribbing as given for Back, inc 4 sts evenly across last row. **37 (39-39-41)** sts.

Change to larger needles and proceed in stocking st for 4 rows. Inc 1 st each end of needle on next and every following 4th row until there are **41 (47-47-53)** sts, then on every following 6th row until there are **49 (55-59-63)** sts. Cont even until work from beg measures **8½ (10-11½-13)"** [**21.5 (25.5-29-33)** cm], ending with a purl row. Place markers at each end of last row. Work **4 (4-6-6)** rows even. Cast off.

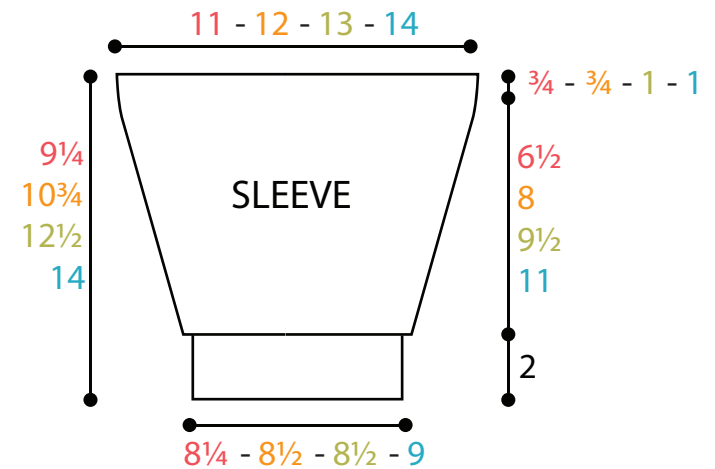
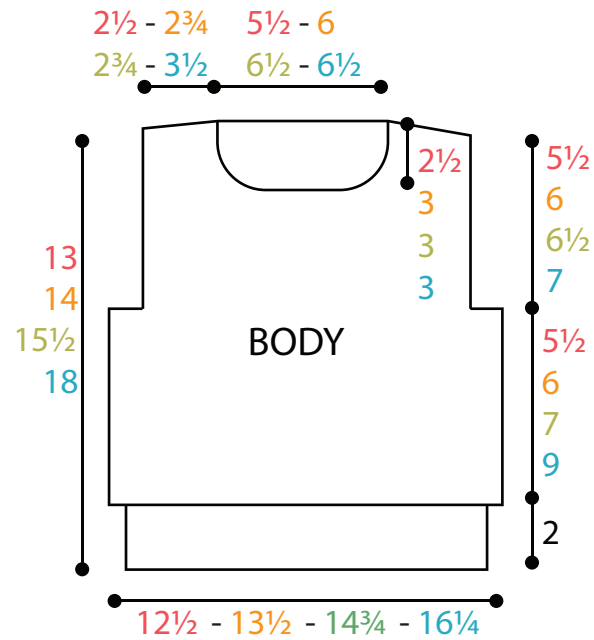
### FINISHING

Pin garment pieces to measurements. Cover with a damp cloth, leaving cloth to dry.

## BERNAT® VERY SCARY KNIT PULLOVERS

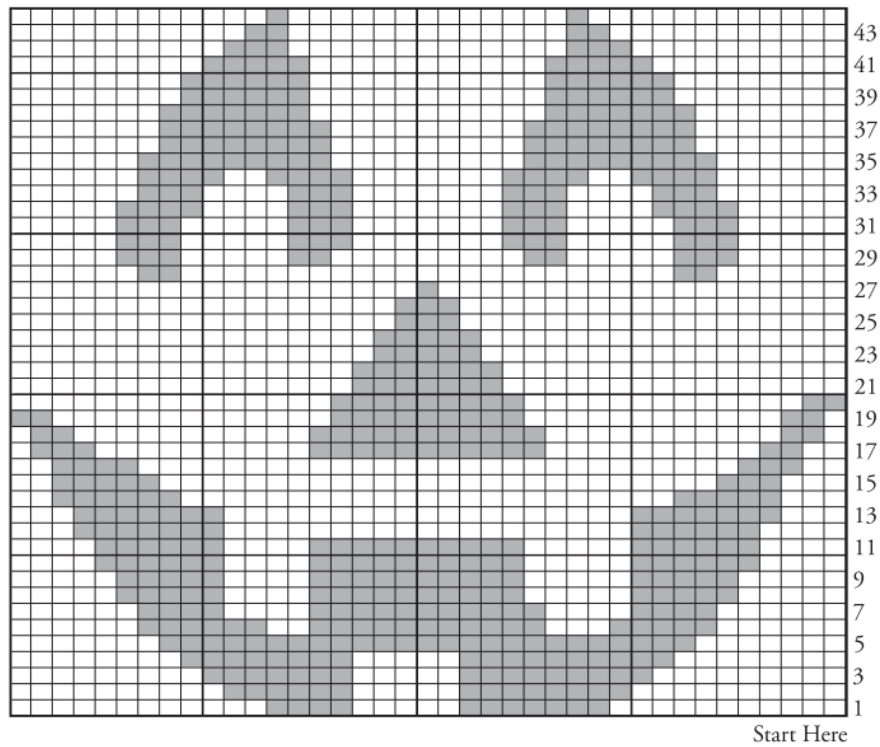
**Neckband:** Sew right shoulder seam. With RS of work facing and smaller needles, pick up and knit **13 (15-15-15)** sts down left front neck edge. K**13 (13-15-15)** from front st holder. Pick up and knit **13 (15-15-15)** sts up right front neck edge. K**25 (27-29-29)** from back st holder, inc 1 st at center. **65 (71-75-75)** sts.  
 Beg on a 2nd row, work 7 rows in (K1. P1) ribbing as given for Back. Cast off in ribbing.

Sew left shoulder and neckband. Sew in sleeves placing rows above markers along cast off sts of front and back to form square armholes. Sew side and sleeve seams.



Key     = Main Color (MC)     = Contrast A

**Chart I**



**Chart II**

