

## BERNAT® REVERSIBLE KNIT LAP BLANKET



KNIT | SKILL LEVEL: EASY

### ABBREVIATIONS

**Approx** = Approximately

**Cont** = Continue(ity)

**K** = Knit

**P** = Purl

**Pat** = Pattern

**Rem** = Remain(ing)

**Rep** = Repeat

**RS** = Right side

**St(s)** = Stitch(es)

**WS** = Wrong side

### MEASUREMENTS

Approx 36" [91.5 cm] wide x 48" [122 cm] long.

### GAUGE

11 sts and 14 rows = 4" [10 cm] in stocking st.

### INSTRUCTIONS

Cast on 96 sts. **Do not** join. Working back and forth across needle in rows, proceed as follows: Knit 3 rows (garter st), noting 1st row is WS.

Proceed in pat as follows (see Chart on page 2):

**1st row:** (RS). K3. Place marker. (K1. P1. K3. P4) 10 times. Place marker. K3.

**2nd row:** K3. Slip marker on this row and following rows. (K4. P3. K1. P1) 10 times. Slip marker on this row and following row. K3. Markers are in position to indicate section of Blanket worked in pat rep. 3 side sts at each end are worked in garter st throughout (knit every row).

**3rd row:** K3. (P1. K1. P1. K3. P3) 10 times. K3.

**4th row:** K3. (K3. P3. K1. P1. K1) 10 times. K3.

**5th row:** K3. (P2. K1. P1. K3. P2) 10 times. K3.

**6th row:** K3. (K2. P3. K1. P1. K2) 10 times. K3.

**7th row:** K3. (P3. K1. P1. K3. P1) 10 times. K3.

**8th row:** K3. (K1. P3. K1. P1. K3) 10 times. K3.

### MATERIALS

**Bernat® Softee® Chunky Twist™** (10.5 oz/300 g; 316 yds/289 m) Taupe Twist (10007) **2 balls**

Size U.S. 11 (8 mm) circular knitting needle 36" [91.5 cm] long **or size needed to obtain gauge.** Stitch markers.

**BERNAT®** REVERSIBLE KNIT LAP BLANKET

- 9th row:** K3. (P4. K1. P1. K3)  
10 times. K3.
- 10th row:** K3. (P3. K1. P1. K4)  
10 times. K3.
- 11th row:** K3. (K1. P4. K1. P1. K2)  
10 times. K3.
- 12th row:** K3. (P2. K1. P1. K4. P1)  
10 times. K3.
- 13th row:** K3. (K2. P4. K1. P1. K1)  
10 times. K3.
- 14th row:** K3. (P1. K1. P1. K4. P2)  
10 times. K3.
- 15th row:** K3. (K3. P4. K1. P1)  
10 times. K3.
- 16th row:** K3. (K1. P1. K4. P3)  
10 times. K3.
- 17th row:** K3. (P1. K3. P4. K1)  
10 times. K3.
- 18th row:** K3. (P1. K4. P3. K1)  
10 times. K3.

These 18 rows form Texture Pat.

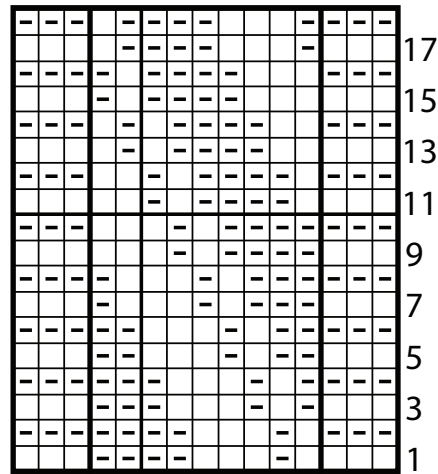
Cont in Texture Pat until work from beg measures 47" [119.5 cm], ending on a WS row.

Knit 3 rows. Cast off knitwise. (WS).

Key

☐ = Knit on RS rows. Purl on WS rows

☒ = Purl on RS rows. Knit on WS rows



Rep 10 times

Start Here

