



KNIT
SKILL LEVEL
EASY



Designed by Christine Marie Chen

What you will need:

RED HEART® Colorscape™: 4 balls 9856 Rome

Susan Bates® Knitting Needles: 6mm [US 10]

Yarn needle.

GAUGE: 16 sts = about 4½" [11.5 cm] in pattern. **CHECK YOUR GAUGE.** Use any size needles to obtain the gauge.



RED HEART® Colorscape™, Art. E874 available in 3.5 oz (100 g), 187 yd (171 m) balls

Rendezvous Knit Shawl

Even though this lacy pattern is knit with #4 weight yarn, it is drapey and soft. If you haven't tried a lace pattern yet, this is a great one to start with. Choose any of the painterly colors in this beautiful yarn.

SHOP KIT

Shawl measures about 16" [40.5 cm] wide and 78" [198 cm] long.

Notes

1. Shawl is worked in rows from side to side.
2. Pattern can be worked by following written instructions or reading chart. Read right side rows of chart from right to left and wrong side rows from left to right.

Special Stitches

skp (slip, knit, pass slipped stitch over) = Slip next stitch as if to knit to right needle, knit next stitch, lift slipped stitch over knit stitch and off needle - 1 st decreased.

sk2p (slip, knit 2 together, pass slipped stitch over) = Slip next stitch as if to knit to right needle, k2tog, lift slipped stitch over the k2tog stitch and off needle - 2 sts decreased.

SHAWL

Cast on 57 sts.

Row 1 (right side): K3, *yo, sk2p, yo, k3; repeat from * across.

Row 2: K3, purl to last 3 sts, k3.

Rows 3-8: Repeat Rows 1 and 2 for 3 more times.

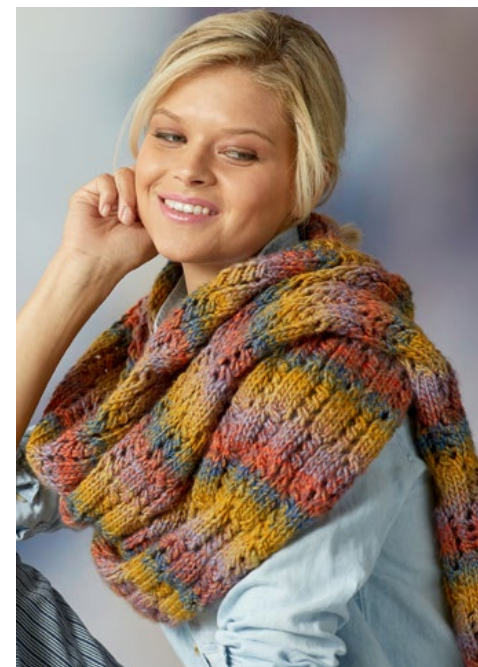
Row 9: K1, k2tog, yo, k3, *yo, sk2p, yo, k3; repeat from * to last 3 sts, yo, skp, k1.

Row 10: K3, purl to last 3 sts, k3.

Rows 11-16: Repeat Rows 9 and 10 for 3 more times.

Repeat Rows 1-16 until piece measures about 78" [198 cm] from beginning, ending with a Row 8.

Bind off.



FINISHING

Weave in ends.

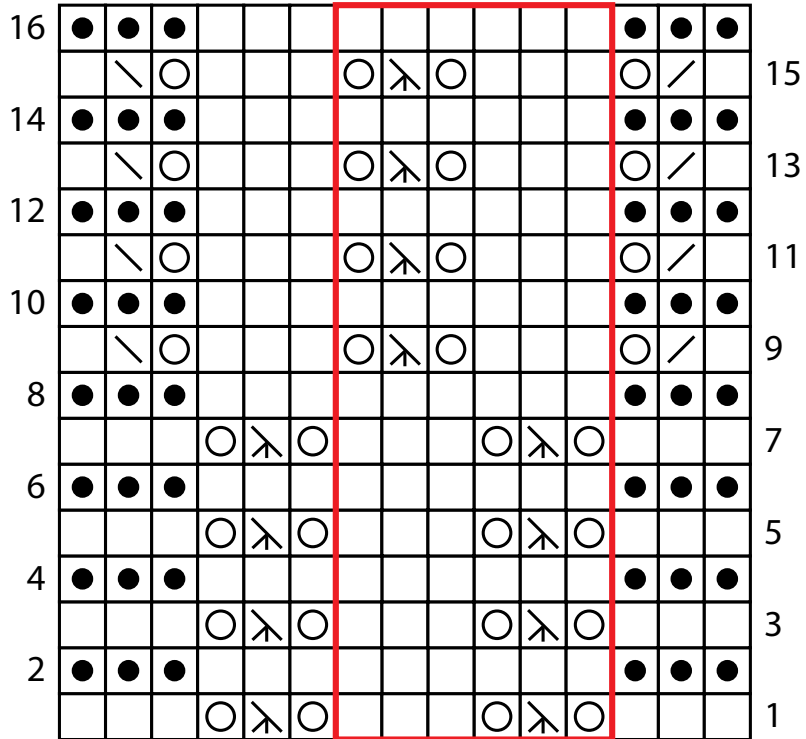
ABBREVIATIONS

k = knit; **k2tog** = knit next 2 sts together; **st(s)** = stitch(es); **yo** = yarn over; * = repeat whatever follows the * as indicated.

See next page for chart and alternate photo



2015 - 2018
WOMEN'S CHOICE AWARD®
AMERICA'S MOST RECOMMENDED
YARN BRAND



KEY

- knit on right side, purl on wrong side
- purl on right side, knit on wrong side
- yarn over
- k2tog (knit 2 stitches together)
- skp (slip, knit, pass over)
- sk2p (slip, k2tog, pssso)
- repeat

