



CROCHET | SKILL LEVEL: INTERMEDIATE

ABBREVIATIONS

Approx = Approximately

Beg = Beginning

Crossed-dc (crossed double crochet) = Skip next stitch. 1 dc in next stitch, working behind dc just made dc in skipped stitch

Ch = Chain(s)

Dc = Double crochet

Dcfp = Yoh and draw up a loop around post of next st at front of work inserting hook from right to left. (Yoh and draw through 2 loops on hook) twice - 1 dcfp made

Hdc = Half double crochet

Hdcfp = Yoh and draw up a loop around post of next st at front of work, inserting hook from right to left. Yoh and draw through 3 loops on hook.

Popcorn = 5 dc in indicated st. Drop loop from hook. Insert hook from front to back in first dc of 5-dc group. Pick up dropped loop and draw through.

Rep = Repeat

RS = Right side

Sc = Single crochet

Shell = (2 dc. Ch 1. 2 dc) in indicated stitch

Sl st = Slip stitch

Sp(s) = Space(s)

St(s) = Stitch(es)

Tog = Together

Trfp = (Yoh) twice and draw up a loop around post of next st at front of work inserting hook from right to left. (Yoh and draw through 2 loops on hook) 3 times

Yoh = Yarn over hook

MATERIALS

RED HEART® Super Saver® (7 oz/198 g; 364 yds/333 m)

Contrast A Medium Purple (0528) **2 balls**

Contrast B Tea Leaf (0624) **2 balls**

Contrast C Carrot (0256) **2 balls**

Contrast D Burgundy (0376) **1 ball**

Contrast E Gold (0321) **1 ball**

Contrast F Coral (0726) **1 ball**

Size H/8 (5 mm) crochet hook **or size needed to obtain gauge.**

MEASUREMENTS

Approx 53 ½ x 63" [136 x 160 cm].

GAUGE

1 motif = 9½" [24 cm].

INSTRUCTIONS

Notes:

- Ch 2 at beg of rnd **does not** count as st.
- Ch 3 at beg of rnd counts as dc.

THROW

Motif (make 30 – 5 each with A, B, C, D, E, and F). See Diagram on page 3.

Ch 4. Join with sl st to a form ring.

1st rnd: Ch 3. 15 dc in ring. Join with sl st in top of ch 3. 16 dc.

2nd rnd: Ch 1. Working first st around same st as joining sl st, (1 hdcfp around next dc. 1 sc in next dc) 8 times. Join with sl st in first hdcfp. 8 hdcfp and 8 sc.

3rd rnd: Ch 1. Working first st in same sp as sl st, (1 sc in next hdcfp. Ch 3. Skip next sc) 8 times. Join with sl st in first sc. 8 sc and 8 ch-3 sps.

4th rnd: Ch 2. [1 trfp around next 1 hdcfp of 2nd rnd. (1 dc. Popcorn. 1 dc) in next ch-3 sp] 8 times. Join with sl st in first trfp. 8 trfp, 16 dc and 8 popcorns.

5th rnd: Sl st in next dc. (Sl st. Ch 1. 1 sc) in next popcorn. (Ch 5. 1 sc in next popcorn) 7 times. Ch 5. Join with sl st in first sc. 8 sc and 8 ch-5 sps.

6th rnd: (Sl st. Ch 1. 1 hdc. 2 dc. 3 tr. 2 dc. 1 hdc) in next ch-5 sp. (1 hdc. 2 dc. 3 tr. 2 dc. 1 hdc) in each of next 7 ch-5 sps. Join with sl st in first hdc. 8 petals.

7th rnd: Skip same sp as sl st. [Ch 2. 1 dc in each of next 3 sts. (2 tr. Ch 2. 2 tr) in next st (center st of 3-tr group). 1 dc in each of next 3 sts. Ch 2. Sl st in each of next 2 hdc] 7 times. 1 dc in each of next 3 sts. (2 tr. Ch 2. 2 tr) in next st. 1 dc in each of next 3 sts. Ch 2. Sl st in last hdc. Join with sl st in same sp as joining sl st. 48 dc and 32 tr.

8th rnd: Sl st in each st to next ch-2 sp. Ch 2. (Shell in next ch-2 sp at tip of next petal. Ch 7. 1 sc in ch-2 sp at tip of next petal. Ch 7) 4 times. Join with sl st in first dc of first shell. 4 shells.

9th rnd: Ch 1. Working first st in same sp as sl st, (1 hdc in each of first 2 dc of next shell. 5 dc in next ch-1 sp of same shell. 1 hdc in each of last 2 dc of same shell. 8 hdc in each of next 2 ch-7 sps) 4 times. Join with sl st in first hdc.

10th rnd: Ch 2. Skip first st. 1 dc in next st. Working behind dc just made, 1 dc in same sp as sl st (first crossed-dc made). Crossed-dc over next 2 sts. (2 dc. 1 trfp. 2 dc) in next dc (center dc of 5-dc corner). [12 crossed-dc to center dc of next 5-dc corner. (2 dc. 1 trfp. 2 dc) in next dc] 3 times. 10 crossed-dc to end of rnd. Join with sl st in first dc.

11th rnd: Ch 1. Working first st in same sp as sl st, 1 hdc in each of first 6 sts. (1 dcfp. 1 hdc. Ch 1. 1 hdc. 1 dcfp) in next 1 trfp. [1 hdc in each of next 28 sts. (1 dcfp. hdc. Ch 1. 1 hdc. 1 dcfp) in next trfp] 3 times. 1 hdc in each of last 22 sts. Join with sl st in first hdc. 120 hdc and 8 dcfp. Fasten off.

ASSEMBLY

Following Assembly Diagram, sew motifs tog. (See page 3).

EDGING

With RS facing, join A with sl st in any corner ch-1 sp.

1st rnd: Ch 2. 3 dc in corner ch-1 sp. 1 dc in each hdc and dcfp around, working 3 dc in each corner ch-1 sp. Join with sl st in first dc. Fasten off.

2nd rnd: Join B with sl st in same sp as joining sl st. Ch 1. 1 sc in each dc around, working (1 sc. Ch 1. 1 sc) in center dc of each 3-dc group. Join with sl st in first sc. Fasten off.

3rd rnd: With E as 2nd rnd.

4th rnd: Join B with sl st in same sp as joining sl st. Ch 1. 1 hdc in each sc around, working (1 hdc. Ch 1. 1 hdc) in each corner ch-1 sp. Join with sl st in first sc. Fasten off.

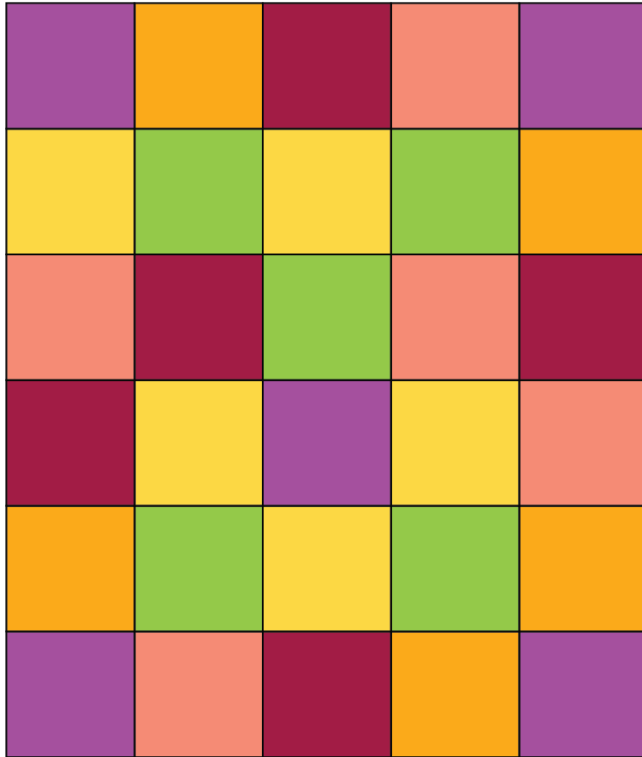
5th rnd: Join C with sl st in any corner ch-1 sp. Ch 3. [(Popcorn. Ch 2. Popcorn) in corner ch-1 sp. Skip next hdc. 1 dc in next hdc. *Ch 1. Skip next hdc. 1 dc in next hdc. Popcorn in next hdc. 1 dc in next hdc. Rep from * to 3 sts before next corner ch-1 sp. Ch 1. Skip next hdc. 1 dc in next hdc. Skip next hdc] 4 times. Join with sl st in first popcorn. Fasten off.

6th rnd: With D as 2nd rnd.

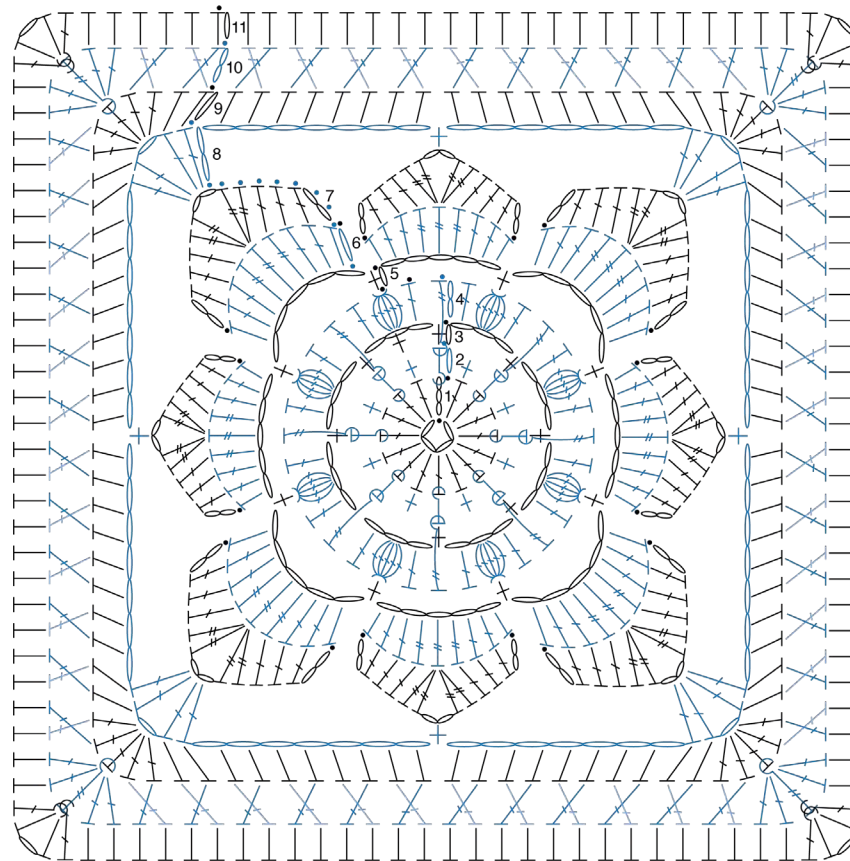
7th rnd: Join A with sl st in any corner ch-1 sp. [(1 sc. Ch 1. 1 sc) in corner ch-1 sp. *Ch 2. Skip next sc. 1 sc in next sc. Rep from * to 1 sc before next corner ch-1 sp. Ch 2. Skip next sc] 4 times. Join with sl st in first sc. **Do not** fasten off.

8th rnd: *Ch 3. 1 sc in 2nd ch from hook. Ch 1. Sl st in next sc. Rep from * around. Join with sl st to first sc. Fasten off.

Assembly Diagram



- 528 Medium Purple (A)
- 624 Tea Leaf (B)
- 256 Carrot (C)
- 376 Burgundy (D)
- 321 Gold (E)
- 726 Coral (F)



MOTIF

STITCH KEY

- = chain (ch)
- = slip stitch (sl st)
- = single crochet (sc)
- = half double crochet (hdc)
- = double crochet (dc)
- = treble crochet (tr)
- = shell
- = crossed double crochet (crossed-dc)
- = popcorn
- = front post half double crochet (hdcfp)
- = front post double crochet (dcfp)
- = front post treble crochet (trfp)