



## ABBREVIATIONS:

**Approx** =

Approximate(ly)

**Beg** = Begin(ning)

**Ch** = Chain(s)

**Cont** = Continue(ity)

**Pat** = Pattern

**Rem** = Remain(ing)

**Rep** = Repeat

**Rnd(s)** = Round(s)

**RS** = Right side

**Sc** = Single crochet

**Sc2tog** = Draw up a

loop in each of next 2

stitches. Yoh and draw

through all loops on

hook

**Sl st** = Slip stitch

**Sp(s)** = Space(s)

**St(s)** = Stitch(es)

**Tog** = Together

**WS** = Wrong side

**Yoh** = Yarn over hook

 CROCHET | SKILL LEVEL: INTERMEDIATE

## MEASUREMENTS

**One Size:** Approx 38" [96.5 cm] wide (excluding fringe) x 27" [68.5 cm] long at center back.

## GAUGE

12 sts and 11 rows = 4" [10 cm] in pat.



## MATERIALS

**Patons® Shetland Chunky™ Tweeds** (3 oz/85 g; 125 yds/114 m)

**Contrast A** Toasty Tweed (67013)

**4 balls**

**Contrast C** Charcoal Tweed (67042)

**3 balls**

**Contrast D** Pewter Tweed (67044)

**1 ball**

**and Patons® Shetland Chunky™** (Solids: 3.5 oz/100 g; 148 yds/136 m)

**Contrast B** Aran (78008)

**4 balls**

Size U.S. K/10½ (6.5 mm) crochet hook **or size needed to obtain gauge.** Stitch marker.

## INSTRUCTIONS

**Note:** Poncho is worked in one piece to center back neck edge, then each front is worked separately.

Wind balls of the colors to be used, one for each separate area of color in the design. To change color, work to last 2 loops on hook and draw new color through last 2 loops and proceed, keeping color change to WS of work.

Begin at lower edge of Back, with A, ch 114. (See diagram on page 5).

**1st row:** (RS). With A, 1 sc in 2nd ch from hook. (Ch 1. Skip next ch. 1 sc in next ch) 5 times, joining B in last sc. \*With B, 1 sc in next ch. (Ch 1. Skip next ch. 1 sc in next ch) 3 times, joining A in last sc. With A, 1 sc in next ch. (Ch 1. Skip next ch. 1 sc in next ch) 5 times, joining C in last sc.\*\* With C, 1 sc in next ch. (Ch 1. Skip next ch. 1 sc in next ch) 6 times, joining A in last sc. With A, 1 sc in next ch. (Ch 1. Skip next ch. 1 sc in next ch) 5 times, joining B in last sc. Rep from \* once more, then from \* to \*\* once. **Do not** join C at end of row. 113 sts. Turn.

**2nd row:** With A, ch 1. 1 sc in first sc. (1 sc in next ch-1 sp. Ch 1. Skip next sc) 4 times. 1 sc in next ch-1 sp. 1 sc in next sc, joining B in last sc. \*With B, 1 sc in next sc. (1 sc in next ch-1 sp. Ch 1. Skip next sc) twice. 1 sc in next ch-1 sp. 1 sc in next sc, joining A in last sc. With A, 1 sc in next sc. (1 sc in next ch-1 sp. Ch 1. Skip next sc) 4 times. 1 sc in next ch-1 sp. 1 sc in next sc, joining C in last sc.\*\* With C, 1 sc in next sc. (1 sc in next ch-1 sp. Ch 1. Skip next sc) 5 times. 1 sc in next ch-1 sp. 1 sc in next sc, joining A in last sc. With A, 1 sc in next sc. (1 sc in next ch-1 sp. Ch 1. Skip next sc) 4 times. 1 sc in next ch-1 sp. 1 sc in next sc, joining B in last sc. Rep from \* once more, then from \* to \*\* once. **Do not** join C in last sc. Turn.

**3rd row:** With A, ch 1. 1 sc in first sc. (Ch 1. Skip next sc. 1 sc in next ch-1 sp) 4 times. Ch 1. Skip next sc. 1 sc in next sc, joining B in last sc. \*With B, 1 sc in next sc. (Ch 1. Skip next sc. 1 sc in next ch-1 sp) twice. Ch 1. Skip next sc. 1 sc in next sc, joining A in last sc. With A, 1 sc in next sc. (Ch 1. Skip next sc. 1 sc in next ch-1 sp) 4 times.

Ch 1. Skip next sc. 1 sc in next sc, joining C in last sc.\*\* With C, 1 sc in next sc. (Ch 1. Skip next sc. 1 sc in next ch-1 sp) 5 times. Ch 1. Skip next sc. 1 sc in next sc, joining A in last sc. With A, 1 sc in next sc. (Ch 1. Skip next sc. 1 sc in next ch-1 sp) 4 times. Ch 1. Skip next sc. 1 sc in next sc, joining B in last sc. Rep from \* once more, then from \* to \*\* once. **Do not** join C in last sc. Turn.

**4th row:** As 2nd row.

**5th to 10th rows:** Rep 3rd and 4th rows 3 times more, joining B in last sc of 10th row.

**11th row:** (RS). With B, ch 1. 1 sc in first sc. (Ch 1. Skip next sc. 1 sc in next ch-1 sp) 4 times. Ch 1. Skip next sc. 1 sc in next sc, joining D in last sc. \*With D, 1 sc in next sc. (Ch 1. Skip next sc. 1 sc in next ch-1 sp) twice. Ch 1. Skip next sc. 1 sc in next sc, joining B in last sc. With B, 1 sc in next sc. (Ch 1. Skip next sc. 1 sc in next ch-1 sp) 4 times. Ch 1. Skip next sc. 1 sc in next sc, joining A in last sc.\*\* With A, 1 sc in next sc. (Ch 1. Skip next sc. 1 sc in next ch-1 sp) 5 times. Ch 1. Skip next sc. 1 sc in next sc, joining B in last sc. With B, 1 sc in

next sc. (Ch 1. Skip next sc. 1 sc in next ch-1 sp) 4 times. Ch 1. Skip next sc. 1 sc in next sc, joining D in last sc. Rep from \* once more, then from \* to \*\* once. **Do not** join A in last sc. Turn.

**12th row:** With B, ch 1. 1 sc in first sc. (1 sc in next ch-1 sp. Ch 1. Skip next sc) 4 times. 1 sc in next ch-1 sp. 1 sc in next sc, joining D in last sc. \*With D, 1 sc in next sc. (1 sc in next ch-1 sp. Ch 1. Skip next sc) twice. 1 sc in next ch-1 sp. 1 sc in next sc, joining B in last sc. With B, 1 sc in next sc. (1 sc in next ch-1 sp. Ch 1. Skip next sc) 4 times. 1 sc in next ch-1 sp. 1 sc in next sc, joining A in last sc.\*\* With A, 1 sc in next sc. (1 sc in next ch-1 sp. Ch 1. Skip next sc) 5 times. 1 sc in next ch-1 sp. 1 sc in next sc, joining B in last sc. With B, 1 sc in next sc. (1 sc in next ch-1 sp. Ch 1. Skip next sc) 4 times. 1 sc in next ch-1 sp. 1 sc in next sc, joining D in last sc. Rep from \* once more, then from \* to \*\* once. **Do not** join A in last sc. Turn.

**13th and 14th rows:** As 11th and 12th rows, joining C at end of 14th row. Leave A, B and D yarn in position.

**15th row:** (RS). With C, ch 1. 1 sc in first sc. (Ch 1. Skip next sc. 1 sc in next ch-1 sp) 4 times. Ch 1. Skip next sc. \*1 sc in each of next 2 sc. (Ch 1. Skip next sc. 1 sc in next ch-1 sp) twice. Ch 1. Skip next sc. 1 sc in each of next 2 sc. (Ch 1. Skip next sc. 1 sc in next ch-1 sp) 4 times. Ch 1. Skip next sc.\*\* 1 sc in each of next 2 sc. (Ch 1. Skip next sc. 1 sc in next ch-1 sp) 5 times. Ch 1. Skip next sc. 1 sc in each of next 2 sc. (Ch 1. Skip next sc. 1 sc in next ch-1 sp) 4 times. Ch 1. Skip next sc. Rep from \* once more, then from \* to \*\* once. 1 sc in last sc. Fasten off. **Do not** turn.

**16th row:** (RS). As 11th row.

**17th row:** As 12th row.

**18th and 19th rows:** As 11th and 12th rows, joining C at end of 19th row. Leave A, B and D yarn in position.

**20th row:** As 15th row.

**21st to 24th rows:** As 11th and 12th rows twice more, joining A at end of 24th row.

**25th row:** As 3rd row.

Rep 2nd to 25th rows for Plaid Pat until work from beg measures approx 27" [68.5 cm], ending on a 4th row of pat.

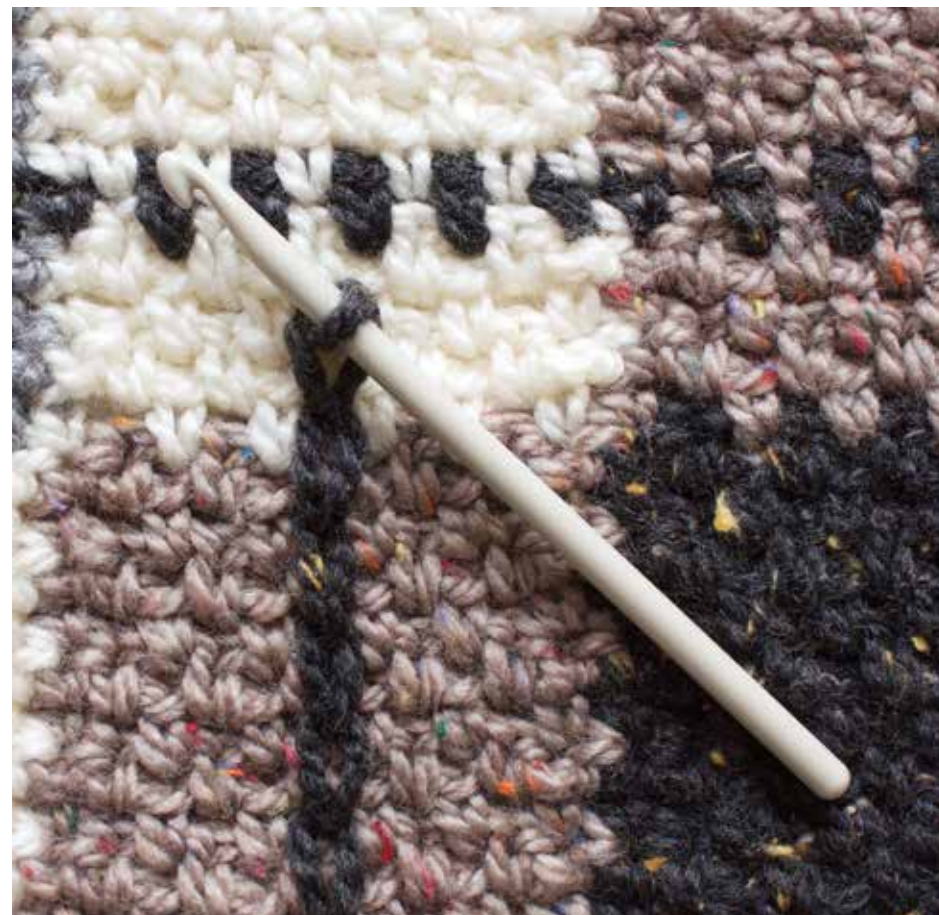
**Shape back neck: Next row:** (RS). With B, ch 1. 1 sc in first sc. (Ch 1. Skip next sc. 1 sc in next ch-1 sp) 4 times. Ch 1. Skip next sc. 1 sc in next sc, joining D in last sc. With D, 1 sc in next sc. (Ch 1. Skip next sc. 1 sc in next ch-1 sp) twice. Ch 1. Skip next sc. 1 sc in next sc, joining B in last sc. With B, 1 sc in next sc. (Ch 1. Skip next sc. 1 sc in next ch-1 sp) 4 times. Ch 1. Skip next sc. 1 sc in next sc, joining A in last sc. With A, 1 sc in next sc. (Ch 1. Skip next sc. 1 sc in next ch-1 sp) 5 times. Ch 1. Skip next sc. 1 sc in next sc, joining B in last sc. With B, 1 sc in next sc. (Ch 1. Skip next sc. 1 sc in next ch-1 sp) 3 times. Ch 1. Skip next sc. 1 sc in next sc. **Turn.** Leave rem sts unworked.

**Next row:** Ch 1. Sc2tog. Pat to end of row. Turn.

**Next row:** Ch 1. Pat to last 2 sts. Sc2tog. Turn. Place marker at end of last row.

Cont even in pat over rem 49 sts until work from marker measures approx 27" [68.5 cm], ending on a 10th row of pat. Fasten off.

With RS facing, skip next 11 sts at center back. Join B with sl st to



next st. Ch 1. 1 sc in same sp as last sl st. Pat to end of row. Turn.

**Next row:** Ch 1. Pat to last 2 sts. Sc2tog. Turn.

**Next row:** Ch 1. Sc2tog. Pat to end of row. Turn. Place marker at end of last row.

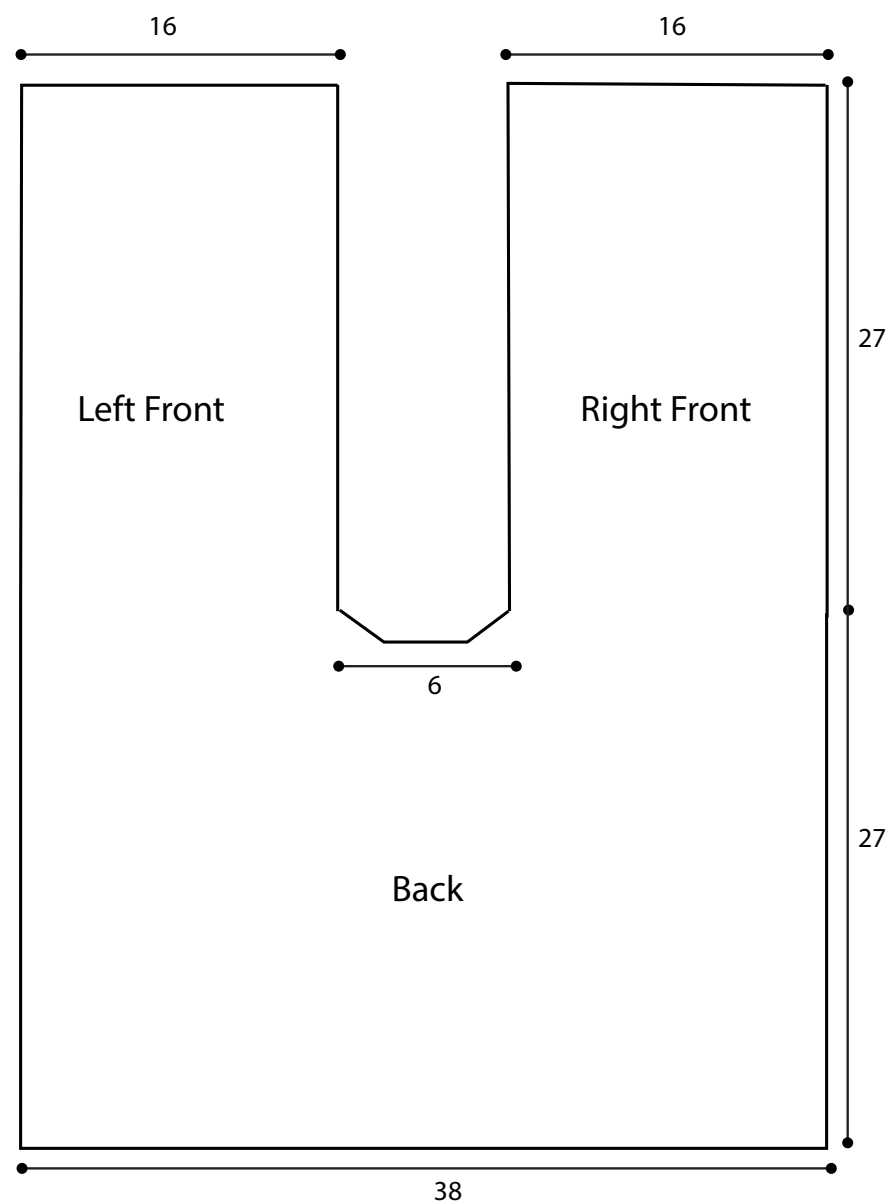
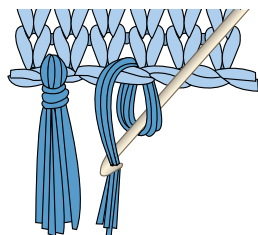
Cont even in pat over rem 49 sts until work from marker measures approx 27" [68.5 cm], ending on a 10th row of pat. Fasten off.

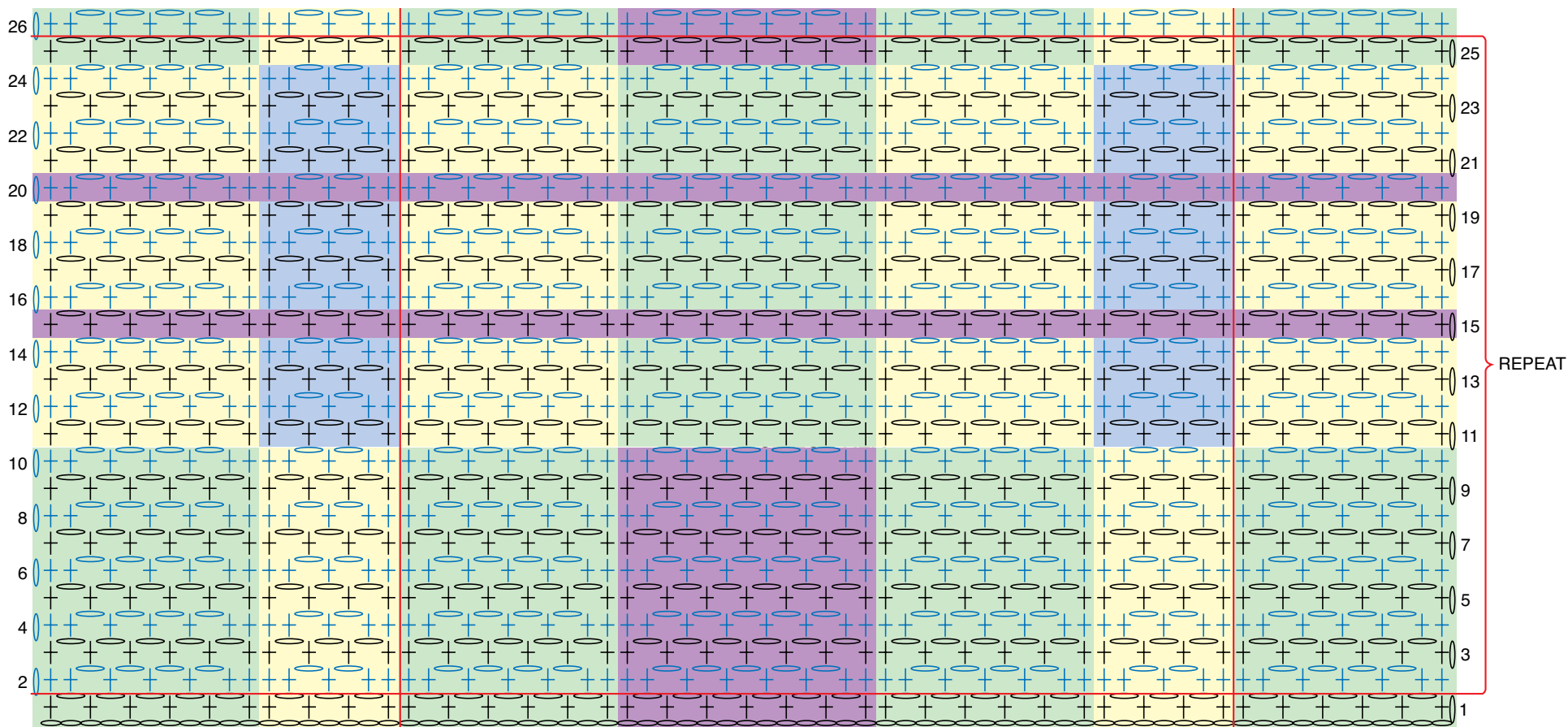
**Front edging:** With RS facing, join C with sl st at lower edge of Right Front. Ch 1. Work sc evenly up front, around back neck edge and down opposite front. Fasten off.

**Vertical Surface Sl St Lines:** With RS facing, join C with sl st to center ch-1 sp at foundation row of Back of A section. Keeping yarn at back (WS) of work, sl st into each ch-1 sp in alternate rows above joining sp to create a straight vertical line of surface sl sts to end of Front, taking care to sl st loosely to avoid pulling in work as you stitch. Fasten off. Rep Vertical Sl St Line in all A sections and in both C sections as shown in photo.

**Note:** Take care to slant Vertical Sl St Lines on either side of neck edge in A sections of Back to meet front edging. Do not cont working Vertical Sl St Lines on Front sides as the front edging will take the place of Vertical Sl St Lines.

**Fringe:** Cut lengths of A, B and C 8" [20.5 cm] long. Taking 3 strands tog, match fringe to color in pat at sides of Poncho, having 5 fringes in each side of A section, 2 fringes in each side of B section and 1 fringe in each side of C section. Trim fringe evenly.





**COLOR KEY**

- = Color A
- = Color B
- = Color C
- = Color D

**STITCH KEY**

- = chain (ch)
- + = single crochet (sc)