



INTERMEDIATE

### MEASUREMENTS

#### Chest measurement

- 4** - **24"** [61 cm]
- 6** - **26"** [66 cm]
- 8** - **28"** [71 cm]
- 10** - **30"** [76 cm]

#### Finished chest

- 4** - **28"** [71 cm]
- 6** - **30"** [76 cm]
- 8** - **34"** [86 cm]
- 10** - **36"** [91 cm]

### TENSION

24 sts and 28 rows = 4" [10 cm] with larger needles in Fair Isle pat.

### MATERIALS

Patons® Astra™ (1.75 oz/50 g)

SIZES	4	6	8	10	
Main Color (MC) Blue	4	4	5	5	balls
Contrast A Orange	2	2	2	2	balls
Contrast B Green	2	2	3	3	balls
Contrast C White	2	2	3	3	balls
Contrast D Dk Green	1	1	1	1	ball
Contrast E Yellow	1	1	1	1	ball
Contrast F Orange	1	1	1	1	ball

Sizes U.S. 4 (3.5 mm) and U.S. 5 (3.75 mm) knitting needles **or size needed to obtain tension.** Snap fastener. Stitch holder. Two safety pins.

### INSTRUCTIONS

The instructions are written for smallest size. If changes are necessary for larger sizes the instructions will be written thus ( ).

#### Note:

Lower body is worked in one piece on circular needles.

When working in Fair Isle pat, carry yarn not in use loosely across WS of work but never over more than 5 sts. When it must pass over more than 5 sts, weave it over and under color in use on next st or at center point of sts it passes over. The colors are never twisted around one another.

When working upper Body of Front, Back and Sleeves, embroider butterflies and flowers in duplicate stitch as indicated on charts.

### BODY

With smaller circular needle and B, cast on **148** (160-184-196) sts. Join in round and placing a marker on first st knit 6 rnds, inc 20 sts evenly across last rnd. **168** (180-204-216) sts.

Change to larger circular needle and proceed as follows:

Work Chart I to end of chart, reading rows from **right** to left and noting the 12 st rep will be worked **14** (15-17-18) times.

With MC, knit **0** (0-2-2) rnds.

Work Chart II to end of chart, reading rows from **right** to left and noting the 12 st rep will be worked **14** (15-17-18) times.

With MC, knit **0** (0-2-2) rounds.

Work Chart III to end of chart, reading rows from **right** to left and noting the 12 st rep will be worked **14** (15-17-18) times.

With MC, knit **0** (0-2-2) rounds.

Work Chart III until 6th row of Chart III is complete.

**Armhole shaping for Back:** With larger needles and A, cast off **2** (2-6-6) sts. **K82** (88-96-102). **Turn.** Leave rem sts for Front on circular needle.

**Next row:** (WS). With A, cast off **2** (2-6-6) sts. Knit to end of row. **80** (86-90-96) sts.



Work 1st to 8th rows of Chart IV in stocking st, reading **knit** rows from **right** to left and **purl** rows from **left** to right, dec 1 st each end of needle on 3rd and following alt rows.

Change to smaller needles and cont working Chart IV dec 1 st each end of needle on every alt row from previous dec until there are **34 (36-36-40)** sts. Leave rem **34 (36-36-40)** sts on a st holder.

**Armhole shaping for Front:** With RS of work facing, larger needles and A, cast off **2 (2-6-6)** sts. **K82 (88-96-102)**.

**Next row:** (WS). With A, cast off **2 (2-6-6)** sts. Knit to end of row. **80 (86-90-96)** sts.

Work 1st to 8th rows of Chart IV in stocking st, dec 1 st each end of needle on 3rd and following alt rows.

Change to smaller needles and cont working Chart IV, dec 1 st each end of needle on every alt row from previous dec until there are **42 (44-44-50)** sts.

**Next row:** (RS). Sl. K1. pss. **K9 (9-9-12)** (neck edge). **Turn.** Leave rem sts on a spare needle.

**Next row:** P2tog. Purl to end of row.

Dec 1 st at neck edge on every row **AT THE SAME TIME** dec 1 st at raglan edge every alt row, from previous dec to 3 sts.

**Next row:** Sl1. P2tog. pss. Fasten off. With RS of work facing, slip next **20 (22-22-22)** sts from spare needle onto a st holder. Join MC to rem sts and knit to last 2 sts. K2tog.

**Next row:** Purl to last 2 sts. P2togtbl.

Dec 1 st at neck edge on every row **AT THE SAME TIME** dec 1 st at raglan edge every alt row from previous dec to 3 sts.

**Next row:** Sl1. P2tog. pss. Fasten off.

## SLEEVES

With B and smaller needles, cast on **32 (32-44-44)** sts. Work 6 rows stocking st inc 4 sts evenly across last row. **36 (36-48-48)** sts.

Change to larger needles and proceed as follows:

**Sizes 4 and 6 only:** Work Chart V in stocking st (beg at row 25 of chart) to end of chart, reading **knit** rows from **right** to left and **purl** rows from **left** to right inc 1 st each end of needle on 3rd and every alt row until there are 50 sts, then every following 4th row to **62 (68)** sts.

**Sizes 8 and 10 only:** Work Chart V in stocking st to end of chart, reading **knit** rows from **right** to left and **purl** rows from **left** to right inc 1 st each end of needle on 3rd and every 4th row to **80 (86)** sts.

**All sizes: Shape raglans: Next row:** With A, cast off **2 (2-6-6)** sts. Knit to end of row.

**Next row:** Cast off **2 (2-6-6)** sts. Knit to end of row. **58 (64-68-74)** sts.

Work 1st to 8th rows of Chart VI in stocking st, reading **knit** rows from **right** to left and **purl** rows from **left** to right, dec 1 st each end of needle on 3rd and following alt rows. **52 (58-62-68)** sts.

Change to smaller needles and cont working in stocking st dec 1 st each end of needle on every alt row from previous dec to **20 (22-22-26)** sts, then on every row until there are **6 (8-8-10)** sts.

Leave rem **6 (8-8-10)** sts on a safety pin.

## FINISHING

Pin garment pieces to measurements. Cover with a damp cloth leaving to dry.

**Neckband:** Sew sleeve seams, reversing seam for curl back edges. Sew raglan seams. With RS of work facing, A and larger double pointed needles, **K6 (8-8-10)** from left sleeve safety pin. Pick up and knit **13 (15-15-17)** sts down left front neck edge. **K20 (22-22-22)** from front st holder. Pick up and knit **13 (15-15-17)** sts up left front neck edge. **K6 (8-8-10)** sts from right sleeve safety pin. **K34 (36-36-40)** sts from back st holder, dec 2 sts evenly across. **90 (102-102-114)** sts. Divide st evenly on 3 needles. Join in rnd, placing a marker on first st.

**1st rnd:** With A, purl.

Work Chart VII to end of chart, noting the 3 st rep will be worked **30 (34-34-38)** times.

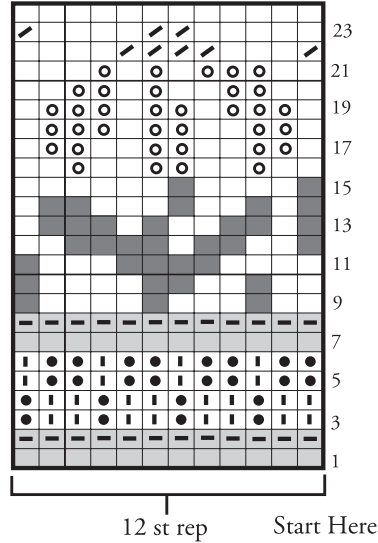
**Next rnd:** With B and smaller double pointed needles, knit, dec **8 (8-8-10)** sts evenly around. **82 (94-94-104)** sts.

Knit 5 more rnds. Cast off.

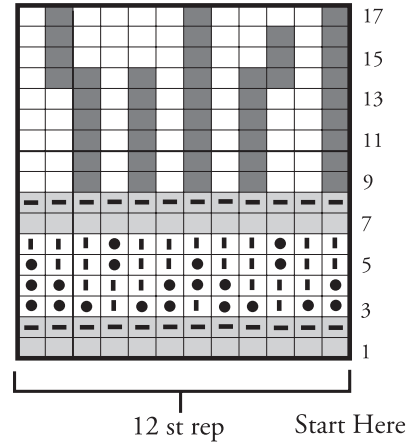
For upper Front, Back and Sleeves embroider butterflies and flowers using duplicate stitch as shown on Charts IV and VI. Embroider butterfly antennas with stem st as illustrated.



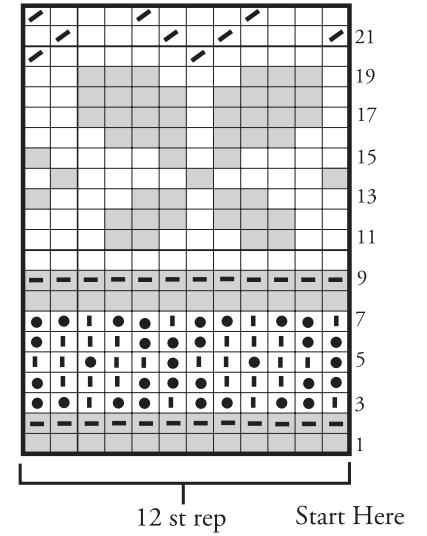
### CHART I












### CHART II



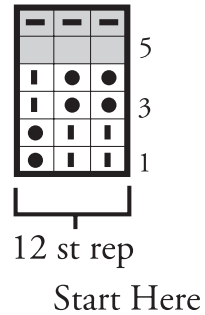
### CHART III



#### Key

-  = MC
-  = Contrast A
-  = Contrast B
-  = Contrast C
-  = Contrast D
-  = Contrast E
-  = Contrast F
-  = With A, purl on RS and knit on WS.
-  = stem stitch with Contrast F

### CHART VII





# Yarnspirations

Say goodbye to knitter's & crocheter's block



Enchanted Garden

CHART IV

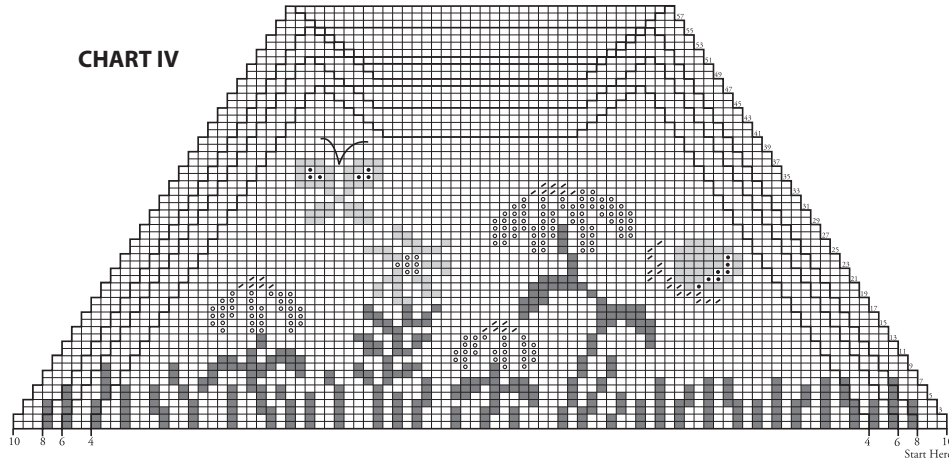
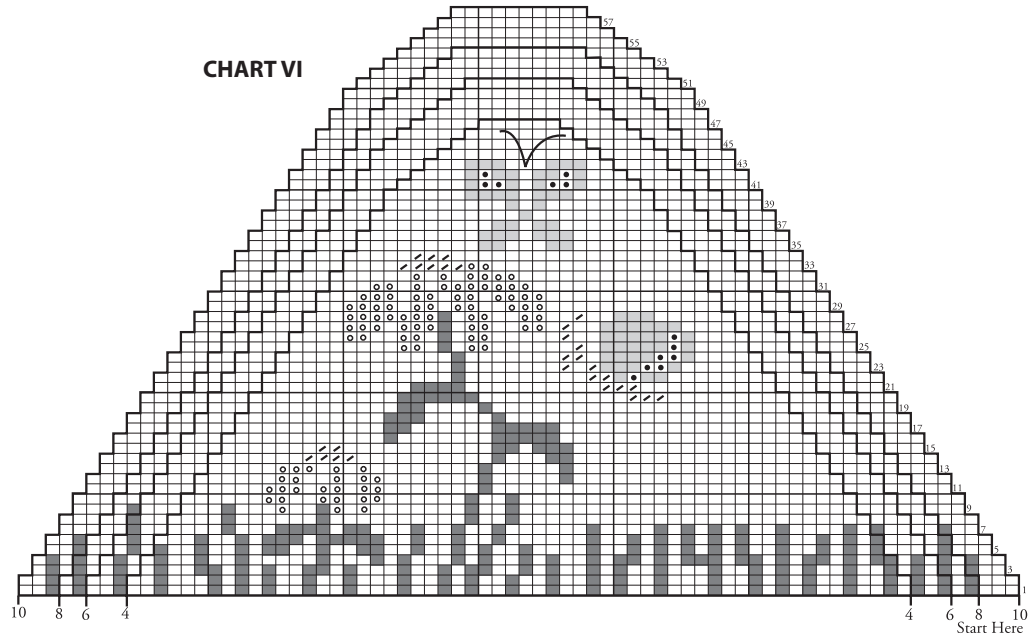
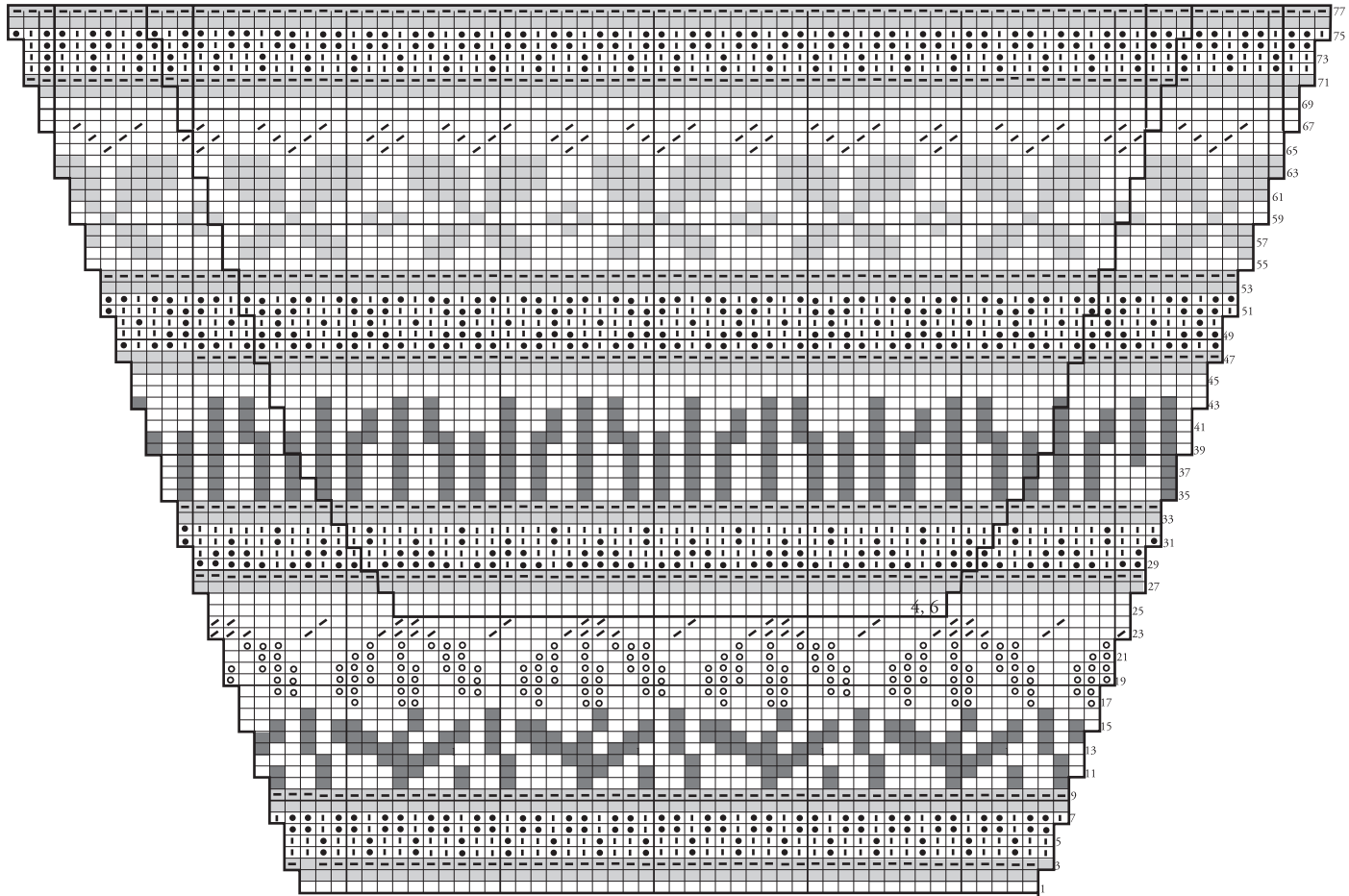


CHART VI

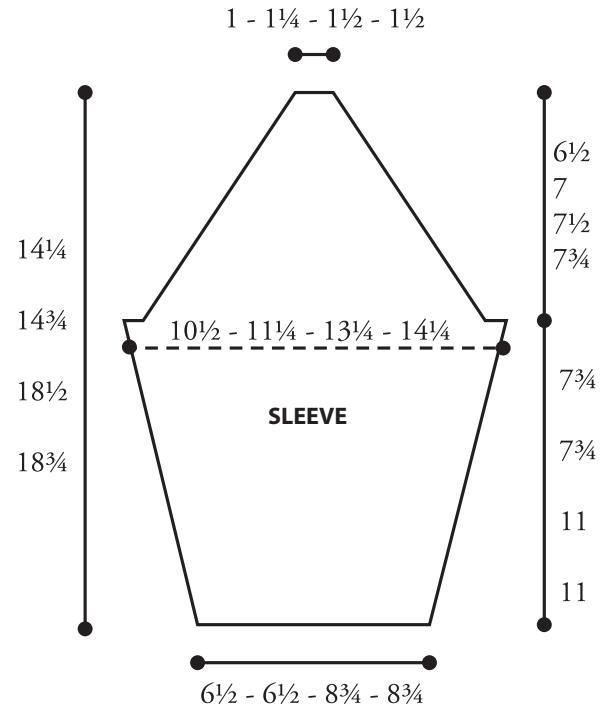
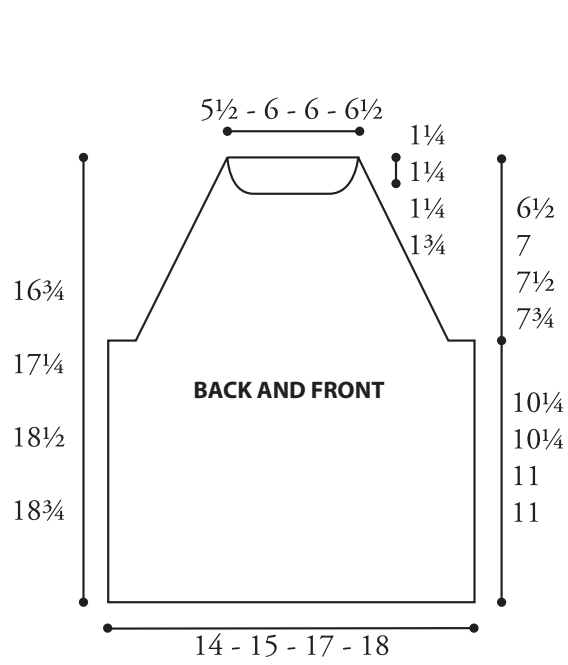




## CHART V



8,10  
Start Here



### DUPLICATE STITCH

