



MATERIALS

Patons® Grace™ (1.75 oz/50 g; 136 yds/125 m)

Citadel (62048)

11 balls

Sizes U.S. E/4 (3.5 mm) and U.S. 7 (4.5 mm) crochet hooks **or size needed to obtain gauge.** Yarn needle.



CROCHET | SKILL LEVEL: **EXPERIENCED**

ABBREVIATIONS

Approx = Approximately

Beg = Beginning

Ch = Chain(s)

Dc = Double crochet

Dtr = (Yoh) 3 times and draw up a loop in stitch indicated. (Yoh and draw through 2 loops on hook) 4 times.

Pat = Pattern

Rep = Repeat

Rnd = Round

RS = Right side

Sc = Single crochet

Sl st = Slip stitch

Sp(s) = Space(s)

St(s) = Stitch(es)

Yoh = Yarn over hook

MEASUREMENTS

Approx 30" x 70" [76 x 178 cm], excluding edging.

GAUGE

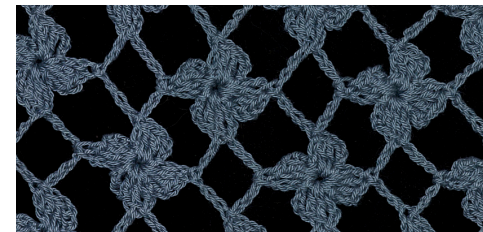
2 flowers and ch-7 sp = 4" [10 cm] with larger hook.

INSTRUCTIONS

Notes:

- All rows are worked with RS facing up.
- Work 2nd and 4th rows of Pat from left to right, instead of from right to left as usual.

- When working sl sts on 2nd and 4th rows into previous rows, take care to not twist your work and insert hook from front to back, wrapping yoh to complete sl st in opposite direction since you are working **left to right**.
- For ease, refer to diagram on page 2 alongside written instructions. Plus, watch our [video tutorial](#).



With larger hook, ch 135 (multiple of 11 ch + 3) loosely.

1st row: (RS). 2 dc in 4th ch from hook (skipped ch-3 counts as dc). Skip next 2 ch. Sl st in next ch — first Petal made. Ch 7. Skip next 3 ch. Sl st in next ch. *Ch 3. Skip next 2 ch. (Sl st. Ch 3. 2 dc. Ch 3. Sl st) all in next ch — Petal made. Ch 3. 2 dc in next ch. Skip next 2 ch. Sl st in next ch — Petal made. Ch 7. Skip next 3 ch. Sl st in next ch. Rep from * to last 3 ch. Ch 3. Skip next 2 ch. (Sl st. Ch 3. 2 dc) all in last ch — last Petal made. **Do not** turn. 24 Petals.

2nd row: (RS is facing and row is worked from left to right). *Ch 10. Sl st in 4th ch from hook — Loop made. Flip Loop up so WS of loop is facing. Ch 3. 2 dc in Loop. Sl st in next ch-7 sp from row below. Ch 3 — Petal made. (Sl st. Ch 3. 2 dc) in same Loop, ensuring last Petal remains with RS up — Petal made. Ch 3.** Skip next Petal. Sl st in top of ch-3 in next Petal. Rep from * to last ch-7 sp. Rep from * to ** once more. Sl st in top of turning ch-3. **Do not** turn.

3rd row: Ch 9 (counts as dtr and ch-3 sp). *Sl st in top of dc in next Petal. Ch 3. (Sl st. Ch 3. 2 dc. Ch 3. Sl st) all in next Loop — Petal made.

Ch 3. 2 dc in same Loop. Sl st in 3rd ch from Loop — Petal made.** Ch 7. Rep from * to Petal before last Loop. Rep from * to **. Ch 3. 1 dtr in last dc 2 rows below. **Do not** turn.

4th row: (RS is facing and row is worked from left to right). Ch 7. Sl st in 4th ch from hook — Loop made. Flip loop up so WS of Loop is facing. Ch 3. 2 dc in Loop. Ch 3. Skip first Petal. Sl st in top of ch-3 in next Petal. *Ch 10. Sl st in 4th ch from hook — Loop made. Flip Loop up so WS of Loop is facing. Ch 3. 2 dc in Loop.** Sl st in ch-7 sp from row below. Ch 3 — Petal made. (Sl st. Ch 3. 2 dc) in same Loop, ensuring last Petal remains with RS up — Petal made. Ch 3. Skip next Petal. Sl st in top of ch-3 in next Petal. Rep from * across, ending last rep at **. Sl st in 6th ch of turning ch-9. Ch 3. Sl st in same Loop. **Do not** turn.

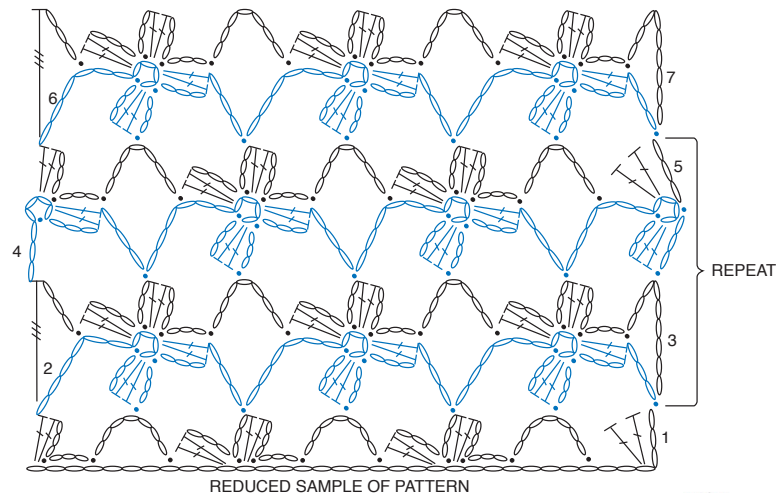
5th row: Ch 3 (counts as dc). 2 dc in first Loop — first Petal made. Sl st in 3rd ch from Loop. Ch 7. *Sl st in top of dc in next Petal. Ch 3. (Sl st. Ch 3. 2 dc. Ch 3. Sl st) all in next Loop — Petal made. Ch 3. 2 dc in same Loop. Sl st in 3rd ch from Loop — Petal made. Ch 7. Rep from * to last

Petal. Sl st in top of dc in last Petal. Ch 3. (Sl st. Ch 3. 2 dc) all in last Loop — Petal made. **Do not** turn.

Rep 2nd to 5th rows for Pat until work from beg measures approx 70" [178 cm], ending on a 4th row of pat. **Do not** fasten off.

Edging: 1st rnd: (RS). With smaller hook, ch 1. Work sc evenly around edges of Shawl, having 3 sc in each corner. Join with sl st to first sc.

2nd rnd: 1 sc in each of first 3 sc. *Ch 3. Sl st in last sc – picot made. 1 sc in each of next 3 sc. Rep from * around. Join with sl st to first sc. Fasten off.



STITCH KEY

- = chain (ch)
- = slip stitch (sl st)
- ┆ = double crochet (dc)
- ┆ = double treble crochet (dtr)

