



KNIT | SKILL LEVEL: **EXPERIENCED**

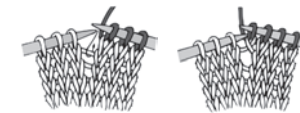


Katherine Poole-Fournier  
Designer

## ABBREVIATIONS

**Approx** = Approximately  
**Beg** = Begin(ning)  
**Cont** = Continue(ity)  
**C2B** = Slip next stitch onto cable needle and leave at back of work. K1, then K1 from cable needle  
**C2F** = Slip next stitch onto cable needle and leave at front of work. K1, then K1 from cable needle  
**C4B** = Slip next 2 stitches onto cable needle and leave at back of work. K2, then K2 from cable needle.  
**C4F** = Slip next 2 stitches onto cable needle and leave at front of work. K2, then K2 from cable needle.  
**C6B** = Slip next 3 stitches onto cable needle and leave at back of work. K3, then K3 from cable needle.  
**C6F** = Slip next 3 stitches onto cable needle and leave at front of work. K3, then K3 from cable needle.  
**Dec** = Decrease(ing)  
**Inc** = Increase(ing)  
**K** = Knit

**K1tbl** = Knit into next stitch through back loop only  
**K2tog** = Knit next 2 stitches together  
**P1tbl** = Purl into next stitch through back loop only  
**M1** = Make 1 stitch by picking up horizontal loop lying before next stitch and knitting into back of loop



**M1P** = Make 1 stitch by picking up horizontal loop lying before next stitch and purling into back of loop.  
**P** = Purl  
**Pat** = Pattern  
**P2tog** = Purl next 2 stitches together  
**P2togtbl** = Purl next 2 stitches together through back loops  
**Rem** = Remain(ing)  
**Rep** = Repeat  
**RS** = Right side

**Ssk** = Slip next 2 stitches knitwise one at a time. Pass them back onto left-hand needle, then knit through back loops together  
**St(s)** = Stitch(es)  
**T4B** = Slip next stitch onto cable needle and leave at back of work. K3, then P1 from cable needle  
**T4F** = Slip next 3 stitches onto cable needle and leave at front of work. P1, then K3 from cable needle  
**T5B** = Slip next 2 stitches onto cable needle and leave at back of work. K3, then P2 from cable needle  
**T5F** = Slip next 3 stitches onto cable needle and leave at front of work. P2, then K3 from cable needle  
**Tog** = Together  
**W&T** = Bring yarn to front of work. Slip next stitch purlwise. Bring yarn to back of work. Slip stitch back onto left-hand needle. Turn.  
**WS** = Wrong side

## MATERIALS

Patons® Classic Wool Worsted™ (3.5 oz/100 g; 194 yds/177 m)

Sizes XS/S M L XL 2/3XL 4/5XL

Coral Peach (77750) or

Brown Mustard (77757) 9 10 11 11 12 13 balls

Sizes U.S. 6 (4 mm) and U.S. 7 (4.5 mm) knitting needles or size needed to obtain gauge. Cable needle. Stitch holder. Tapestry needle.

## SIZES

### To fit bust/chest measurement

<b>XS/S</b>	<b>28-34" [71-86.5 cm]</b>
<b>M</b>	<b>36-38" [91.5-96.5 cm]</b>
<b>L</b>	<b>40-42" [101.5-106.5 cm]</b>
<b>XL</b>	<b>44-46" [112-117 cm]</b>
<b>2/3XL</b>	<b>48-54" [122-137 cm]</b>
<b>4/5XL</b>	<b>56-62" [142-157.5 cm]</b>

### Finished bust/chest measurement

<b>XS/S</b>	<b>40" [101.5 cm]</b>
<b>M</b>	<b>44" [112.5 cm]</b>
<b>L</b>	<b>48" [122.5 cm]</b>
<b>XL</b>	<b>52" [132 cm]</b>
<b>2/3XL</b>	<b>58" [147.5 cm]</b>
<b>4/5XL</b>	<b>65" [165 cm]</b>

## GAUGE

20 sts and 26 rows = 4" [10 cm] in stocking st with larger needles.

## INSTRUCTIONS

The instructions are written for smallest size. If changes are necessary for larger sizes the instructions will be written thus (.). Numbers for each size are shown in the same color throughout the pattern. When only one number is given in black, it applies to all sizes.

### Chart I - Small Honeycomb Cable

See page 8.

**1st row:** (RS). C2B. C2F

**2nd row:** Purl.

**3rd row:** C2F. C2B.

**4th row:** Purl.

These 4 rows form Chart I Pat.

### Chart II - Extended Treble Left Twist Cable

See page 8.

**1st row:** (RS). K3. P6. K3.

**2nd row:** P3. K6. P3.

**3rd to 6th rows:** Rep 1st and 2nd rows twice.

**7th row:** T4F. P4. T4B.

**8th row:** K1. P3. K4. P3. K1.

**9th row:** P1. T4F. P2. T4B. P1.

**10th row:** K2. (P3. K2) twice.

**11th row:** P2. T4F. T4B. P2.

**12th row:** K3. P6. K3.

**13th row:** P3. C6F. P3.

**14th row:** As 12th row.

**15th row:** P3. K6. P3.

**16th row:** As 12th row.

**17th to 20th rows:** As 13th to 16th rows.

**21st row:** As 13th row.

**22nd row:** As 12th row.

**23rd row:** P2. T4B. T4F. P2.

**24th row:** As 10th row.

**25th row:** P1. T4B. P2. T4F. P1.

**26th row:** As 8th row.

**27th row:** T4B. P4. T4F.

**28th row:** As 2nd row.

**29th to 32nd rows:** As 1st and 2nd rows twice.

These 32 rows form Chart II Pat.

### Chart III - Knot Cable

See page 8.

**1st row:** (RS). K3. P4. C6F. P4. K3.

**2nd row:** P3. K4. P6. K4. P3.

**3rd row:** K3. P4. K6. P4. K3.

**4th row:** As 2nd row.

**5th row:** T5F. P2. K6. P2. T5B.

**6th row:** K2. P3. K2. P6. K2. P3. K2.

**7th row:** P2. T5F. C6F. T5B. P2.

**8th row:** K4. P12. K4.

**9th row:** P4. (C6B) twice. P4.

**10th row:** K4. P12. K4.

**11th row:** P2. T5B. C6F. T5F. P2.

**12th row:** As 6th row.

**13th row:** T5B. P2. K6. P2. T5F.

**14th to 16th rows:** As 2nd to 4th rows.

These 16 rows form Chart III Pat.

### Chart IV - Extended Treble Right Twist Cable

See page 8.

**1st row:** (RS). K3. P6. K3.

**2nd row:** P3. K6. P3.

**3rd to 6th rows:** As 1st and 2nd rows twice.

**7th row:** T4F. P4. T4B.

**8th row:** K1. P3. K4. P3. K1.

**9th row:** P1. T4F. P2. T4B. P1.

**10th row:** K2. (P3. K2) twice.

**11th row:** P2. T4F. T4B. P2.

**12th row:** K3. P6. K3.

**13th row:** P3. C6B. P3.

**14th row:** As 12th row.

**15th row:** P3. K6. P3.

**16th row:** As 12th row.

**17th to 20th rows:** As 13th to 16th rows.

**21st row:** As 13th row.

**22nd row:** As 12th row.

**23rd row:** P2. T4B. T4F. P2.

**24th row:** As 10th row.

**25th row:** P1. T4B. P2. T4F. P1.

**26th row:** As 8th row.

**27th row:** T4B. P4. T4F.

**28th row:** As 2nd row.

**29th to 32nd rows:** As 1st and 2nd rows twice.

These 32 rows form Chart IV Pat.

## BACK

\*\*With smaller needles cast on **114 (126-134-142-150-162)** sts.

**1st row:** (RS). K2. \*P2. K2. Rep from \* to end of row.

**2nd row:** P2. \*K2. P2. Rep from \* to end of row.

Rep these 2 rows of (K2. P2) ribbing for 2½" [6.5 cm], ending on a RS row.

**Size XS/S only: Next row:** (WS). (P6. M1P) twice. (P7. M1P) 12 times. P6. (M1P. P6) twice. 130 sts.

**Size M only: Next row:** (WS). (P8. M1P. P7. M1P) 7 times. P7. M1P. P7. M1P. P7. 142 sts.

**Size L only: Next row:** (WS). (P7. M1P) 3 times. (P6. M1P) 13 times. (P7. M1P) 3 times. P7. M1P. P7. 154 sts.

**Size XL only: Next row:** (WS). P4. M1P. (P5. M1P) 26 times. P4. M1P. P4. 170 sts.

**Size 2/3XL only: Next row:** (WS). P5. M1P. (P4. M1P) 35 times. P5. 186 sts.

**Size 4/5XL only: Next row:** (WS). (P5. M1P) 7 times. (P4. M1P) 23 times. (P5. M1P) 6 times. P5. 198 sts.

Change to larger needles and proceed in pat as follows, noting *charts are read from right to left on RS rows, and left to right on WS rows:*

**1st row:** (RS). P2. Work 1st row of Chart I **4 (4-5-6-7-7)** times. P1

**(2-3-3-3-3)**. K1tbl. P1 **(2-3-3-3-3)**. Work 1st row of Chart II. P1 **(2-2-2-2-3)**. K1tbl. P1 **(2-2-2-2-3)**. Work 1st row of Chart I **4 (4-4-5-6-7)** times. P1 **(2-2-2-2-2)**. K1tbl. P1 **(2-2-2-2-2)**. Work 1st row of Chart III. P1 **(2-2-2-2-2)**. K1tbl. P1 **(2-2-2-2-2)**. Work 1st row of Chart I **4 (4-4-5-6-7)** times. P1 **(2-2-2-2-3)**. K1tbl. P1 **(2-2-2-2-3)**. Work 1st row of Chart IV. P1 **(2-3-3-3-3)**. K1tbl. P1 **(2-3-3-3-3)**. Work 1st row of Chart I **4 (4-5-6-7-7)** times. P2.

**2nd row:** K2. Work 2nd row of Chart I **4 (4-5-6-7-7)** times. K1 **(2-3-3-3-3)**. P1tbl. K1 **(2-3-3-3-3)**. Work 2nd row of Chart IV. K1 **(2-2-2-2-3)**. P1tbl. K1 **(2-2-2-2-3)**. Work 2nd row of Chart I **4 (4-4-5-6-7)** times. K1 **(2-2-2-2-2)**. P1tbl. K1 **(2-2-2-2-2)**. Work 2nd row of Chart III. K1 **(2-2-2-2-2)**. P1tbl. K1 **(2-2-2-2-2)**. Work 2nd row of Chart I **4 (4-4-5-6-7)** times. K1 **(2-2-2-2-3)**. P1tbl. K1 **(2-2-2-2-3)**. Work 2nd row of Chart II. K1 **(2-3-3-3-3)**. P1tbl. K1 **(2-3-3-3-3)**. Work 2nd row of Chart I **4 (4-5-6-7-7)** times. K2.

**3rd row:** P2. Work 3rd row of Chart I **4 (4-5-6-7-7)** times. P1 **(2-3-3-3-3)**. K1tbl. P1 **(2-3-3-3-3)**. Work 3rd row of Chart II. P1 **(2-2-2-2-3)**. K1tbl. P1 **(2-2-2-2-3)**. Work 3rd

row of Chart I **4 (4-4-5-6-7)** times. P1 **(2-2-2-2-2)**. K1tbl. P1 **(2-2-2-2-2)**. Work 3rd row of Chart III. P1 **(2-2-2-2-2)**. K1tbl. P1 **(2-2-2-2-2)**. Work 3rd row of Chart I **4 (4-4-5-6-7)** times. P1 **(2-2-2-2-3)**. K1tbl. P1 **(2-2-2-2-3)**. Work 3rd row of Chart IV. P1 **(2-3-3-3-3)**. K1tbl. P1 **(2-3-3-3-3)**. Work 3rd row of Chart I **4 (4-5-6-7-7)** times. P2.

**4th row:** K2. Work 4th row of Chart I **4 (4-5-6-7-7)** times. K1 **(2-3-3-3-3)**. P1tbl. K1 **(2-3-3-3-3)**. Work 4th row of Chart IV. K1 **(2-2-2-2-3)**. P1tbl. K1 **(2-2-2-2-3)**. Work 4th row of Chart I **4 (4-4-5-6-7)** times. K1 **(2-2-2-2-2)**. P1tbl. K1 **(2-2-2-2-2)**. Work 4th row of Chart III. K1 **(2-2-2-2-2)**. P1tbl. K1 **(2-2-2-2-2)**. Work 4th row of Chart I **4 (4-4-5-6-7)** times. K1 **(2-2-2-2-3)**. P1tbl. K1 **(2-2-2-2-3)**. Work 4th row of Chart II. K1 **(2-3-3-3-3)**. P1tbl. K1 **(2-3-3-3-3)**. Work 4th row of Chart I **4 (4-5-6-7-7)** times. K2. Charts I, II, III and IV are now in position.

Cont in chart pat as established until work from beg measures **19 (20-20-20½-21-21)" [48.5 (51-51-52-53.5-53.5) cm]**, ending on a WS row.

**Shape armholes:** Keeping cont of pat, cast off **6 (8-10-12-14-16)** sts at beg of next 2 rows. **118 (126-134-146-158-166)** sts.\*\*

**Sizes XL, 2/3XL and 4/5XL only:**  
**1st row:** (RS). P2. ssk. Pat to last 4 sts. K2tog. P2. **144 (156-164)** sts.  
**2nd row:** K2. P2togtbl. Pat to last 4 sts. P2tog. K2. **142 (154-162)** sts. Rep last 2 rows **1 (3-4)** time(s) more. **138 (142-146)** sts

**All sizes: 1st row:** (RS). P2. ssk. Pat to last 4 sts. K2tog. P2. **116 (124-132-136-136-144)** sts  
**2nd row:** K2. Pat to last 2 sts. P2. Rep last 2 rows **12 (12-14-14-14-16)** times more. **92 (100-104-108-108-112)** sts.

Cont even in pat, keeping cont of 2 reverse stocking sts at each end as established, until armholes measure **8 (8½-9-9½-10-10½)" [20.5 (21.5-23-24-25.5-26.5) cm]**, ending on a WS row.

**Shape shoulders:** Keeping cont of pat, cast off **12 (12-13-14-16-16)** sts at beg of next 4 rows. Cast off rem **44 (48-52-52-44-48)** sts.

## FRONT

Work from \*\* to \*\* as given for Back.

**Sizes XL, 2/3XL and 4/5XL only:**

**1st row:** (RS). P2. ssk. Pat to last 4 sts. K2tog. P2. **144 (156-164)** sts.

**2nd row:** K2. P2togtbl. Pat to last 4 sts. P2tog. K2. **142 (154-162)** sts.

Rep last 2 rows **1 (3-4)** time(s) more. **138 (142-146)** sts.

**All sizes: 1st row:** (RS). P2. ssk. Pat to last 4 sts. K2tog. P2. **116 (124-132-136-140-144)** sts.

**2nd row:** K2. Pat to last 4 sts. K2.

**3rd row:** As 1st row. **114 (122-130-134-138-142)** sts.

## Divide Front for Neckline:

**Next row:** (WS – Dec row to set up center front cast off). K2. Pat across **45 (49-53-55-57-59)** sts. P2. (P2tog. P3) 3 times. P2tog. P1. Pat to end of row. K2. **110 (118-126-130-134-138)** sts.

**Next row:** (RS). P2. ssk. Pat across **43 (47-51-53-55-57)** sts. Cast off next 16 sts. Pat to last 3 sts. K2tog. P2.

**Next row:** K2. Pat across **44 (48-52-54-56-58)** sts (neck edge). Turn. Leave rem sts on a st holder. **46 (50-54-56-58-60)** sts.

**Right Front:** Cont on **46 (50-54-56-58-60)** sts.

## Shape neck and armhole:

**1st row:** (RS). ssk. Pat to last 4 sts. K2tog. P2.

**2nd row:** K2. Pat to end of row. Rep last 2 rows **3 (3-5-4-2-4)** times more. **38 (42-42-46-52-50)** sts.

Proceed as follows:

**1st row:** (RS). ssk. Pat to last 4 sts. K2tog. P2.

**2nd row:** K2. Pat to end of row.

**3rd row:** Pat to last 4 sts. K2tog. P2.

**4th row:** As 2nd row. Rep last 4 rows **2 (3-2-3-4-3)** times more. **29 (33-33-34-37-38)** sts.

Proceed as follows:

**1st row:** (RS). Pat to last 4 sts. K2tog. P2.

**2nd row:** K2. Pat to end of row.

**3rd row:** Pat to last 2 sts. P2.

**4th row:** As 2nd row. Rep last 4 rows **4 (6-6-5-4-5)** times more. **24 (26-26-28-32-32)** sts.

Cont even in pat until armhole measures **8 (8½-9-9½-10-10½)" [20.5 (21.5-23-24-25.5-26.5) cm]**, ending on a RS row.

**Shape shoulder: Next row:** (WS). Cast off **12 (13-13-14-16-16)** sts. Pat to end of row.

**Next row:** Work even in pat. Cast off rem **12 (13-13-14-16-16)** sts.

**Left Front:** With WS facing, join yarn to sts on st holder for Left Front.

**Next row:** (WS). Pat to last 2 sts. K2.

**Shape neck and armhole: 1st row:** (RS). P2. ssk. Pat to last 2 sts. K2tog.

**2nd row:** Pat to last 2 sts. K2. Rep last 2 rows **3 (3-5-4-2-4)** times more. **38 (42-42-46-52-50)** sts.

Proceed as follows:

**1st row:** (RS). P2. ssk. Pat to last 2 sts. K2tog.

**2nd row:** Pat to last 2 sts. K2.

**3rd row:** P2. ssk. Pat to end of row.

**4th row:** As 2nd row. Rep last 4 rows **2 (3-2-3-4-3)** times more. **29 (33-33-34-37-38)** sts.

Proceed as follows:

**1st row:** (RS). P2. ssk. Pat to end of row.

**2nd row:** Pat to last 2 sts. K2.

**3rd row:** P2. Pat to end of row.

**4th row:** As 2nd row. Rep last 4 rows **4 (6-6-5-4-5)** times more. **24 (26-26-28-32-32)** sts.

Cont even in pat until armhole measures **8 (8½-9-9½-10-10½)" [20.5 (21.5-23-24-25.5-26.5) cm]**, ending on a WS row.

**Shape shoulder: Next row:** (RS). Cast off **12 (13-13-14-16-16)** sts. Pat to end of row.

**Next row:** Work even in pat. Cast off rem **12 (13-13-14-16-16)** sts.

## LEFT SLEEVE

\*\*\*With smaller needles, cast on **46 (54-54-54-58-58)** sts. Work 2½" [6.5 cm] in (K2. P2) ribbing as given for Back, ending on a RS row.

**Size XS/S only: Next row:** (WS). P2. (M1P. P2) twice. (M1P. P3) 12 times. M1P. P2. M1P. P2. 62 sts.

**Sizes M, L, and XL only: Next row:** (WS). (P4. M1P) 3 times. (P3. M1P) 10 times. (P4. M1P) 3 times. 70 sts.

**Sizes 2/3XL and 4/5XL only:**  
**Next row:** (WS). P1. M1P. P1. (M1P. P3) 18 times. M1P. P2. 78 sts.

Change to larger needles and proceed in pat as follows:\*\*\*

**1st row:** (RS). K3. P1. K1tbl. P1. Work 1st row of Chart I 4 (5-5-5-6-6) times. P1. K1tbl. P1. Work 1st row of Chart II. P1. K1tbl. P1. Work 1st row of Chart I 4 (5-5-5-6-6) times. P1. K1tbl. P1. K3.

**2nd row:** P3. K1. P1tbl. K1. Work 2nd row of Chart I 4 (5-5-5-6-6) times. K1. P1tbl. K1. Work 2nd row of Chart II. K1. P1tbl. K1. Work 2nd row of Chart I 4 (5-5-5-6-6) times. K1. P1tbl. K1. P3.

**3rd row:** K3. P1. K1tbl. P1. Work 3rd row of Chart I 4 (5-5-5-6-6) times. P1. K1tbl. P1. Work 3rd row of Chart II. P1. K1tbl. P1. Work 3rd row of Chart I 4 (5-5-5-6-6) times. P1. K1tbl. P1. K3.

**4th row:** P3. K1. P1tbl. K1. Work 4th row of Chart I 4 (5-5-5-6-6) times. K1. P1tbl. K1. Work 4th row of Chart II. K1. P1tbl. K1. Work 4th row of Chart I 4 (5-5-5-6-6) times. K1. P1tbl. K1. P3.

**5th row:** K2. M1. K1. P1. K1tbl. P1. Work 1st row of Chart I 4 (5-5-5-6-6) times. P1. K1tbl. P1. Work 5th row of Chart II. P1. K1tbl. P1. Work 1st row of Chart I 4 (5-5-5-6-6) times. P1. K1tbl. P1. K1. M1. K2. 64 (72-72-72-80-80) sts.

**6th row:** P4. K1. P1tbl. K1. Work 2nd row of Chart I 4 (5-5-5-6-6) times. K1. P1tbl. K1. Work 6th row of Chart II. K1. P1tbl. K1. Work 2nd row of Chart I 4 (5-5-5-6-6) times. K1. P1tbl. K1. P4.

**7th row:** K4. P1. K1tbl. P1. Work 3rd row of Chart I 4 (5-5-5-6-6) times. P1. K1tbl. P1. Work 7th row of Chart II. P1. K1tbl. P1. Work 3rd row of Chart I 4 (5-5-5-6-6) times. P1. K1tbl. P1. K4.

**8th row:** P4. K1. P1tbl. K1. Work 4th row of Chart I 4 (5-5-5-6-6) times. K1. P1tbl. K1. Work 8th row of Chart II. K1. P1tbl. K1. Work 4th row of Chart I 4 (5-5-5-6-6) times. K1. P1tbl. K1. P4.

**9th row:** K4. P1. K1tbl. P1. Work 1st row of Chart I 4 (5-5-5-6-6) times. P1. K1tbl. P1. Work 9th row of Chart II. P1. K1tbl. P1. Work 1st row of Chart I 4 (5-5-5-6-6) times. P1. K1tbl. P1. K4.

**10th row:** P4. K1. P1tbl. K1. Work 2nd row of Chart I 4 (5-5-5-6-6) times. K1. P1tbl. K1. Work 10th row of Chart II. K1. P1tbl. K1. Work 2nd row of Chart I 4 (5-5-5-6-6) times. K1. P1tbl. K1. P4.

**11th row:** K2. M1. K2. P1. K1tbl. P1. Work 3rd row of Chart I 4 (5-5-5-6-6) times. P1. K1tbl. P1. Work 11th row of Chart II. P1. K1tbl. P1. Work 3rd row of Chart I 4 (5-5-5-6-6) times. P1. K1tbl. P1. K2. M1. K2. 66 (74-74-74-82-82) sts.

Charts I and II are now in position.

\*\*\*\*Cont in chart pat as established inc 1 st at each end of row every following 6th (6th-6th-4th-4th-4th) row from previous inc until there are 90 (98-102-110-118-124) sts, taking increased sts into stocking st.

Cont even in pat until work from beg measures 19 (19-19-19-18-17)" [48.5 (48.5-48.5-48.5-45.5-43) cm], ending on a WS row.

**Shape top:** Cast off 6 (6-6-6-6-8) sts at beg of next 2 rows. 78 (86-90-98-104-108) sts.

**1st row:** (RS). K2. ssk. Pat to last 4 sts. K2tog. K2.

**2nd row:** P2. Pat to last 2 sts. P2. Rep last 2 rows 12 (14-16-14-17-17) times more. 52 (56-56-68-68-72) sts.

**1st row:** (RS). K2. ssk. Pat to last 4 sts. K2tog. K2.

**2nd row:** P2. P2tog. Pat to last 4 sts. P2togtbl. P2. Rep last 2 rows 2 (0-0-3-0-1) time(s) more. 40 (52-52-52-64-64) sts. Cast off 6 sts beg next 4 (6-6-6-8-8) rows. 16 sts.\*\*\*\*

Work Saddle Shoulder Band across rem 16 sts as follows:

**Next row:** P2. Work appropriate row of Chart II. P2.

**Next row:** K2. Work appropriate row of Chart II. K2. Rep last 2 rows, keeping cont of Chart II, until Saddle Shoulder Band measures 3½ (4-4-4½-5-5)" [9 (10-10-11.5-12.5-12.5) cm], ending on a RS row.

**Shape neck edge: 1st row:** (WS). Cast off 2 sts. Pat to last 2 sts. P2. 14 sts. PM.

**2nd row:** Knit to last 3 sts. K2tog. K1. 13 sts.

**3rd row:** Purl.

**4th row:** Knit.

**5th row:** Purl.

Rep last 4 rows until 8 sts rem.

Cont even until Saddle Shoulder Band measures **7 (7¾-8-8¼-8¼-8¾)" [18 (19.5-20.5-21-21-22) cm]**, ending on a WS row. Cast off.

## RIGHT SLEEVE

Work from \*\*\* to \*\*\* as given for Left Sleeve.

Proceed as follows:

**1st row:** (RS). K3. P1. K1tbl. P1. Work 1st row of Chart I **4 (5-5-5-6-6)** times. P1. K1tbl. P1. Work 1st row of Chart IV. P1. K1tbl. P1. Work 1st row of Chart I **4 (5-5-5-6-6)** times. P1. K1tbl. P1. K3.

**2nd row:** P3. K1. P1tbl. K1. Work 2nd row of Chart I **4 (5-5-5-6-6)** times. K1. P1tbl. K1. Work 2nd row of Chart IV. K1. P1tbl. K1. Work 2nd row of Chart I **4 (5-5-5-6-6)** times. K1. P1tbl. K1. P3.

**3rd row:** K3. P1. K1tbl. P1. Work 3rd row of Chart I **4 (5-5-5-6-6)** times. P1. K1tbl. P1. Work 3rd row of Chart IV. P1. K1tbl. P1. Work 3rd row of Chart I **4 (5-5-5-6-6)** times. P1. K1tbl. P1. K3.

**4th row:** P3. K1. P1tbl. K1. Work 4th row of Chart I **4 (5-5-5-6-6)** times. K1. P1tbl. K1. Work 4th row of Chart IV. K1. P1tbl. K1. Work 4th row of Chart I **4 (5-5-5-6-6)** times. K1. P1tbl. K1. P3.

**5th row:** K2. M1. K1. P1. K1tbl. P1. Work 1st row of Chart I **4 (5-5-5-6-6)** times. P1. K1tbl. P1. Work 5th row of Chart IV. P1. K1tbl. P1. Work 1st row of Chart I **4 (5-5-5-6-6)** times. P1. K1tbl. P1. K1. M1. K2. **64 (72-72-72-80-80)** sts.

**6th row:** P4. K1. P1tbl. K1. Work 2nd row of Chart I **4 (5-5-5-6-6)** times. K1. P1tbl. K1. Work 6th row of Chart IV. K1. P1tbl. K1. Work 2nd row of Chart I **4 (5-5-5-6-6)** times. K1. P1tbl. K1. P4.

**7th row:** K4. P1. K1tbl. P1. Work 3rd row of Chart I **4 (5-5-5-6-6)** times. P1. K1tbl. P1. Work 7th row of Chart IV. P1. K1tbl. P1. Work 3rd row of Chart I **4 (5-5-5-6-6)** times. P1. K1tbl. P1. K4.

**8th row:** P4. K1. P1tbl. K1. Work 4th row of Chart I **4 (5-5-5-6-6)** times. K1. P1tbl. K1. Work 8th row of Chart IV. K1. P1tbl. K1. Work 4th row of Chart I **4 (5-5-5-6-6)** times. K1. P1tbl. K1. P4.

**9th row:** K4. P1. K1tbl. P1. Work 1st row of Chart I **4 (5-5-5-6-6)** times. P1. K1tbl. P1. Work 9th row of Chart IV. P1. K1tbl. P1. Work 1st row of Chart I **4 (5-5-5-6-6)** times. P1. K1tbl. P1. K4.

**10th row:** P4. K1. P1tbl. K1. Work 2nd row of Chart I **4 (5-5-5-6-6)** times. K1. P1tbl. K1. Work 10th row of Chart IV. K1. P1tbl. K1. Work 2nd row of Chart I **4 (5-5-5-6-6)** times. K1. P1tbl. K1. P4.

**11th row:** K2. M1. K2. P1. K1tbl. P1. Work 3rd row of Chart I **4 (5-5-5-6-6)** times. P1. K1tbl. P1. Work 11th row of Chart IV. P1. K1tbl. P1. Work 3rd row of Chart I **4 (5-5-5-6-6)** times. P1. K1tbl. P1. K2. M1. K2. **66 (74-74-74-82-82)** sts.

Charts I and IV are now in position.

Work from \*\*\*\* to \*\*\*\* as given for Left Sleeve.

Work Saddle Shoulder Band across rem 16 sts as follows:

**Next row:** P2. Work appropriate row of Chart IV. P2.

**Next row:** K2. Work appropriate row of Chart IV. K2.

Rep last 2 rows, keeping cont of Chart IV, until Saddle Shoulder

Band measures **3½ (4-4-4½-5-5)" [9 (10-10-11.5-12.5-12.5) cm]**, ending on a WS row.

**Shape neck edge: 1st row:** (RS). Cast off 2 sts. Pat to last 2 sts. K2. 14 sts. PM.

**2nd row:** Purl.

**3rd row:** K1. ssk. Knit to end of row. 13 sts.

**4th row:** Purl.

**5th row:** Knit.

Rep last 4 rows until 8 sts rem.

Cont even until Saddle Shoulder Band measures **7 (7¾-8-8¼-8¼-8¾)" [18 (19.5-20.5-21-21-22) cm]**, ending on a WS row. Cast off.

## SHAWL COLLAR

With smaller needles, cast on **162 (170-178-178-186-186)** sts. Work 4" [10 cm] in (K2. P2) ribbing as given for Front, ending on a WS row.

## Shape Collar

**Note:** When you encounter wrapped sts, pick up wrap, placing it on left-hand needle and working next st tog with wrap for each wrapped st.

**1st row:** (RS). (K2. P2) **22** (**23-24-24-25-25**) times. K1. W&T.

**2nd row:** P1. (K2. P2) 3 times. K2. P1. W&T.

**3rd row:** K1. (P2. K2) 5 times. P2. K1. W&T.

**4th row:** P1. (K2. P2) 7 times. K2. P1. W&T.

Cont in ribbing as established, working an additional 8 sts each row, until **1** (**5-1-5-1-5**) st(s) rem unworked. PM at end of last row.

Cont even in (K2. P2) ribbing until Collar from marker measures 4½" [11.5 cm].

Cast off in ribbing.

## FINISHING

Pin garment pieces to measurements. Cover with a damp cloth, leaving cloth to dry.

Sew Saddle Shoulder Bands to Back and Front as shown in diagram sewing front shoulder seams to marker on Saddle Shoulder Bands. Sew Sleeve and side seams. Sew in Sleeves. Pin Shawl Collar in position with widest point at center back neck edge. Layer right front of Shawl Collar over left front and sew side edges in position along cast-off sts at center front.

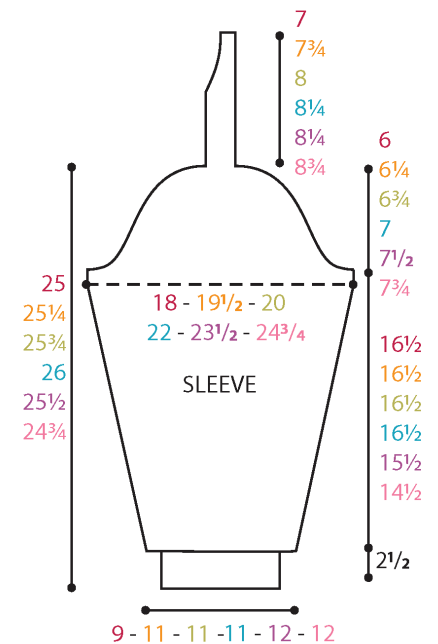
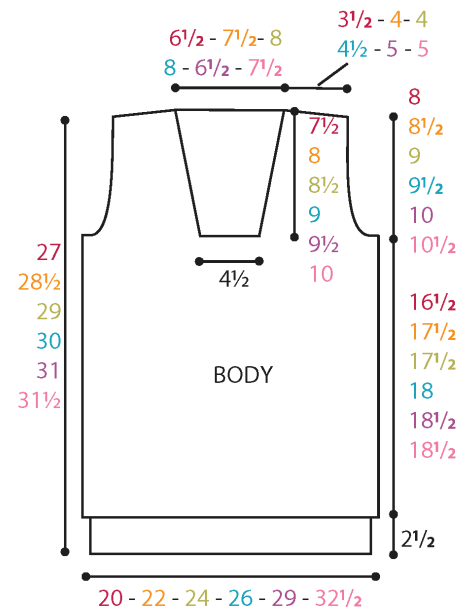
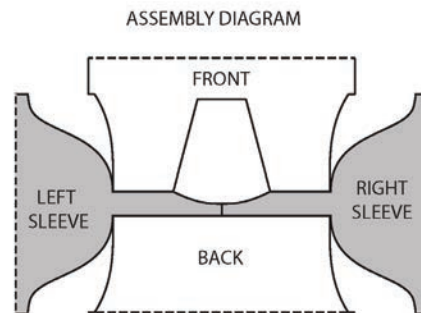
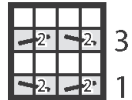
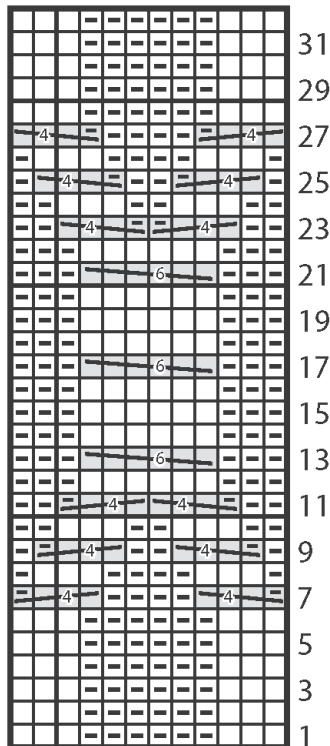


Chart I - Small Honeycomb Cable  
(worked over 4 sts)



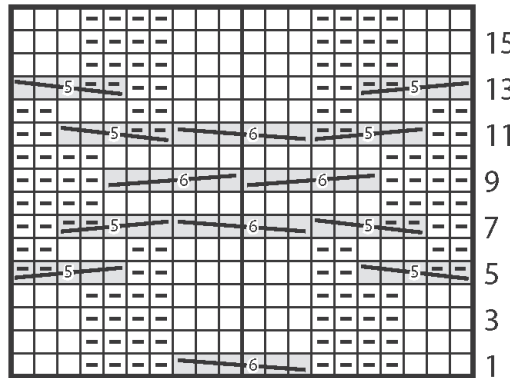
Start here

Chart II - Extended Treble Left Twist Cable  
(worked over 12 sts)



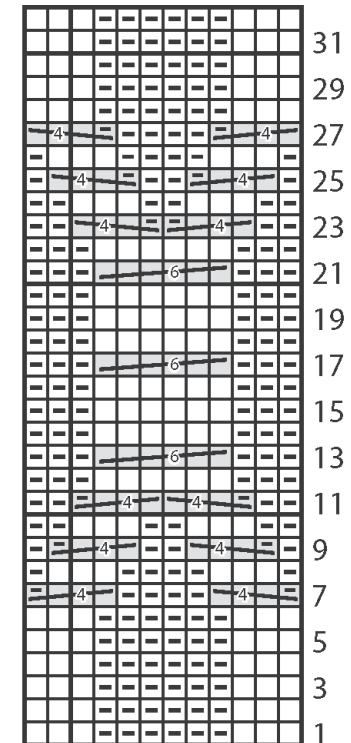
Start here

Chart III - Knot Cable  
(worked over 20 sts)



Start here

Chart IV - Extended Treble Right Twist Cable  
(worked over 12 sts)



Start here

### Key

- = Knit on RS rows. Purl on WS rows.
- ◻ = Purl on RS rows. Knit on WS rows.
- = C2B
- = C2F
- = C6B
- = C6F
- = T4B
- = T4F
- = T5B
- = T5F