



CASUAL PULLOVER (CHILD)

## SIZES

### To fit chest measurement

4	24	ins	[61	cm	]
6	26	ins	[66	cm	]
8	28	ins	[71	cm	]
10	32	ins	[81.5	cm	]

### Finished chest

4	30	ins	[76	cm	]
6	32	ins	[81.5	cm	]
8	34	ins	[86.5	cm	]
10	38½	ins	[98	cm	]

## MATERIALS

Patons Astra (50 g/1.75 oz)

Sizes 4 6 8 10

Main Color (MC) (Dk Beige)

1 1 1 1 ball

Contrast A (White)

2 3 3 3 balls

Contrast B (Pink)

4 5 5 5 balls

Contrast C (Lt Beige)

1 1 1 1 ball

Sizes 3.75 mm (U.S. 5) and 4 mm (U.S. 6) knitting needles. Size 3.75 mm (U.S. 5) circular needle 24 ins [60 cm] long for Collar **or size needed to obtain tension.** 2 st holders.

## TENSION

24 sts and 28 rows = 4 ins [10 cm] with larger needles in fair isle pat.

## Instructions

*The instructions are written for smallest size. If changes are necessary for larger sizes the instructions will be written thus ( ).*

**Note:** When working from charts, carry yarn not in use loosely across WS of work, but never over more than 5 sts. When it must pass over more than 5 sts, weave it over and under color in use on next st or at center of sts it passes over.

## BACK

\*\*With B and smaller needles, cast on 79 (85-91-101) sts.

Change to MC and proceed as follows:

**1st row: (RS).** \*K1. P1. Rep from \* to last st. K1.

This row forms seed st pat.

Work 5 rows more in seed st pat, inc 11 (11-11-13) sts evenly across last row. 90 (96-102-114) sts.

Change to larger needles and proceed as follows:

Work 1st and 2nd rows of Chart I reading knit rows from **right** to left and purl rows from **left** to right, noting the 12 st rep will be worked 7 (8-8-9) times. Rep these 2 rows twice more. Beg with 3rd row, work Chart I to end of chart. Rep 29th and 30th rows until work from beg measures 9½ (10-10½-10½) ins [24 (25.5-26.5-26.5) cm], ending with RS facing for next row.



ABBREVIATIONS: [www.patonsyarns.com/glossary](http://www.patonsyarns.com/glossary)

**Armhole shaping:** Cont rep 29th and 30th rows of Chart I, cast off 4 (4-6-6) sts beg next 2 rows. 82 (88-90-102) sts.\*\*

Cont even in pat until armhole measures 5½ (6-6-7½) ins [14 (15-15-19) cm], ending with RS facing for next row. Cast off.

## FRONT

Work from \*\* to \*\* as given for Back.

Work 2 (2-2-6) rows even in pat.

**Next row:** (RS). Keeping cont of pat, dec 1 st at center of row. 81 (87-89-101) sts.

**Placket Placement: Next row:** (WS). Pat 35 (38-39-45) sts. With B, P11. Join 2nd ball of A, and pat to end of row.

**Next row:** (RS). Pat 35 (38-39-45) sts. With B, (P1. K1) 5 times. P1. Pat to end of row.

**Next 5 rows:** Pat 35 (38-39-45) sts. With B, work in seed st across next 11 sts. Pat to end of row.

**Placket Opening: Next row:** (RS). Pat 35 (38-39-45) sts. With B, work 5 sts seed st. **Turn.** Leave rem sts on a spare needle.

Pat across 40 (43-44-50) sts working 5 sts with B in seed st, as

established, until Placket opening measures 1½ (2-2-2½) ins [4 (5-5-6) cm], ending with RS facing for next row.

**Next row:** Pat to last 6 sts. With B, work seed st to end of row.

**Next row:** With B, work 6 sts seed st. Pat to end of row.

**Next row:** Pat to last 7 sts. With B, work seed st to end of row.

**Next row:** With B, work 7 sts seed st. Pat to end of row.

Cont in this manner, adding 1 st to width of seed st placket every alt row, until seed st placket is 14 (15-15-16) sts wide.

Cont even in pat until armhole measures 5½ (6-6-7½) ins [14 (15-15-19) cm], ending with RS facing for next row.

**Next row:** Cast off 26 (28-29-34) sts for shoulder. Leave rem 14 (15-15-16) sts for Collar on a st holder.

With RS facing, join B to rem sts on spare needle. Cast off 1 st. Pat to end of row.

Cont across 40 (43-44-50) sts in pat working 5 sts with B in seed st, as established, until Placket opening measures 1½ (2-2-2½) ins [4 (5-5-6) cm], ending with RS facing for next row.

**Next row:** With B, work 6 sts seed st. Pat to end of row.

**Next row:** Pat to last 6 sts. With B, work 6 sts seed st.

**Next row:** With B, work 7 sts seed st. Pat to end of row.

**Next row:** Pat to last 7 sts. With B, work 7 sts seed st.

Cont in this manner, adding 1 st to width of seed st placket every alt row, until seed st placket is 14 (15-15-16) sts wide.

Cont even in pat until armhole measures 5 (6-6-7½) ins [14 (15-15-19) cm], ending with WS facing for next row.

**Next row:** Cast off 26 (28-29-34) sts for shoulder. Leave rem 14 (15-15-16) sts for Collar on a st holder.

## SLEEVES

With B and smaller needles, cast on 37 (37-41-41) sts. Change to MC and work 6 rows seed st as given for Back, inc 5 sts evenly across last row. 42 (42-46-46) sts.

Change to larger needles and proceed as follows:

**Size 10 only:** Work 1st and 2nd rows of Chart II in stocking stitch, reading knit rows from **right** to left and purl rows from **left** to right, noting the 4 st rep will be worked 11 times. Rows 1 and 2 form pat. Cont in pat, inc 1 st at each end of needle on 3rd row, then every following 4th row to 54 sts, then on every following 6th row to 72 sts, taking inc sts into pat.

**All sizes:** Work Chart III in stocking st to end of chart, reading knit rows from **right** to left and purl rows from **left** to right, noting the 12 st rep will be worked 3 (3-3-6) times, inc 1 st each end of needle on 3rd (3rd-3rd-5th) and every following 4th (4th-4th-6th) row until there are 58 (62-62-82) sts.

Rep 33rd and 34th rows for rem pat, inc 1 st at each end of needle on every following 6th row from previous inc to 60 (74-74-84) sts, taking inc sts into pat. Cont even in pat until work from beg measures 12 (13½-14-18) ins [30.5 (34.5-35.5-45.5) cm], ending with RS facing for next row. Cast off.

**FINISHING**

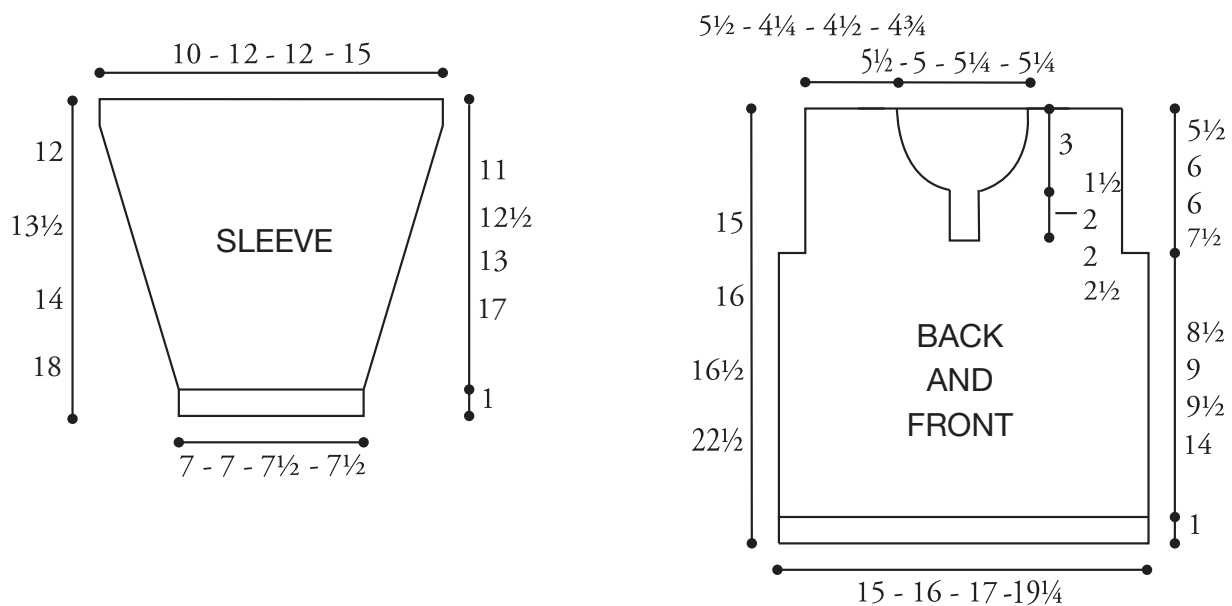
Pin garment pieces to measurements. Cover with a damp cloth leaving to dry.

**Collar:** Sew shoulder seams. With RS of work facing, B and circular needle, work seed st across 14 (15-15-16) sts on Right Front st holder. Pick up and knit 25 (27-27-29) sts across Back neck edge.

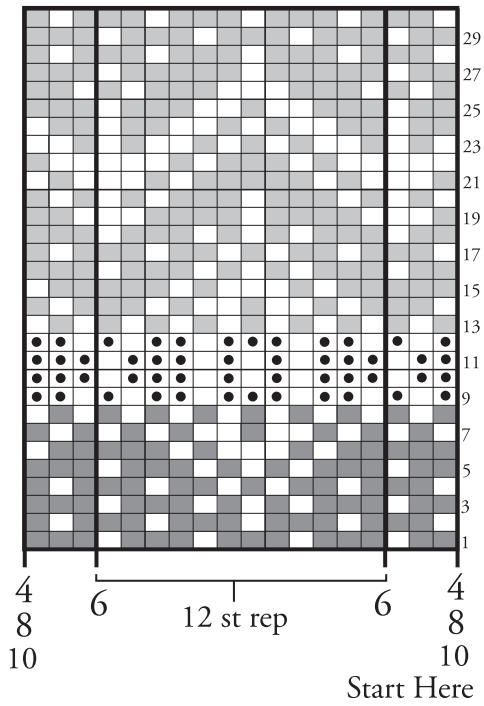
Work seed st pat across 14 (15-15-16) sts on Left Front st holder. 53 (57-57-61) sts.

Cont in seed st until Collar from beg measures 2½ ins [6 cm] ending with RS facing for next row. Cast off in pat.

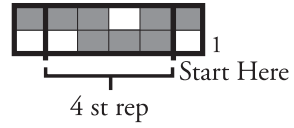
Place markers ¾ (¾-1-1) ins [2 (2-2.5-2.5) cm] down from cast-off edge at each side of sleeve. Sew in sleeves, placing rows above markers between cast-off sts at Front and Back armholes to form square armholes. Sew side and sleeve seams.







### CHART I

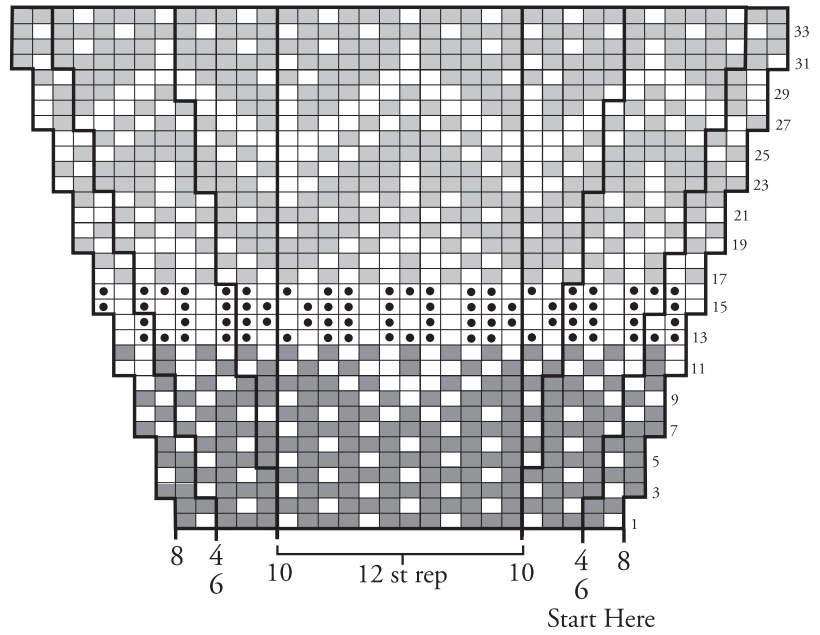


### CHART II



### CHART III

- Key**
-  = MC
  -  = Contrast A
  -  = Contrast B
  -  = Contrast C



 Patons

... a part of your life.

P.O. Box 40, Listowel ON N4W 3H3