



KNIT
SKILL LEVEL
EASY



Designed by Cathy Payson

What you will need:

RED HEART® Hygge™: 9 balls
8406 Pearl

Susan Bates® Circular Needle:
8mm [US 11], 24" [60 cm]
long or longer

Yarn needle

GAUGE: 13 sts = 4" [10 cm]; 15
rows = 4" [10 cm] in Banded
Basket Stitch pattern. **CHECK
YOUR GAUGE. Use any size
needle to obtain the gauge.
Exact gauge is not critical to
this project.**



**RED HEART®
Hygge, Art. E869**
available in 5 oz
(141 g), 132 yd (121 m) balls

Knit Nesting Throw

Ultra-cozy yarn in an interesting
Basket Stitch variation combine
for a throw that will soothe the
days annoyances. Knit it for any
resting spot and enjoy!

**Throw measures about 47" [119.5 cm]
wide x 58" [147.5 cm] long.**

Notes

1. Circular needle is used to accommodate large number of stitches. Work back and forth on circular needle as if working with straight needles.
2. Banded Basket Stitch pattern can be worked from written instructions or by following chart. Read right side rows of chart from right to left and wrong side rows from left to right.

PATTERN STITCH

**Banded Basket Stitch (multiple of
9 sts + 6)**

Row 1 (right side): P6, *k3, p6; repeat
from * to end.

Row 2: K6, *p3, k6; repeat from * to end.

Rows 3-6: Repeat Rows 1 and 2 twice
more.

Row 7: K6, *p3, k6; repeat from * to end.

Row 8: P6, *k3, p6; repeat from * to end.

Rows 9 and 10: Repeat Rows 7 and 8
once more.

Repeat Rows 1-10 for Banded Basket
Stitch pattern.

THROW

Cast on 152 sts.

Beginning on wrong side, knit 1 row.

Row 1 (set-up row - right side): K1
(edge st), work Row 1 of Banded Basket
Stitch pattern to last st, k1 (edge st).

Row 2: K1, work next row of Banded
Basket Stitch pattern to last st, k1.

Repeat Row 2, knitting first and last
stitch (for edge sts) and working
Banded Basket Stitch pattern between
the edge sts, until piece measures
about 57" [147.5 cm] from beginning,
ending with a Row 6 (wrong side) of the
Banded Basket Stitch pattern.

Next Row (right side): Knit.

With wrong side facing, bind off as if to
knit.



FINISHING

If desired, block throw to finished
measurements.
Weave in ends.

ABBREVIATIONS

k = knit; **p** = purl; **st(s)** = stitch(es);
* = repeat whatever follows the * as
indicated.

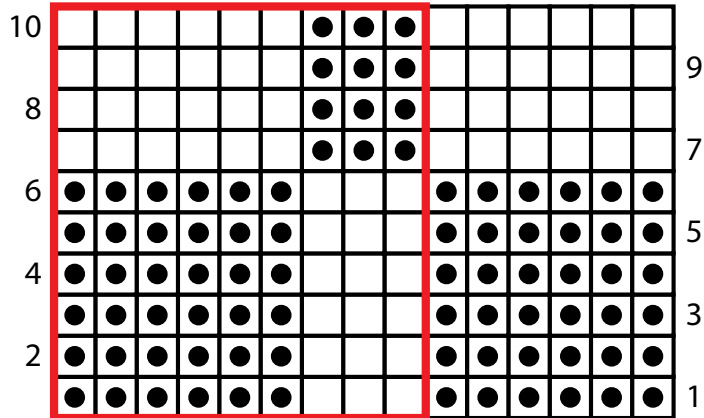
continued...

SHOP KIT



2015 - 2018
WOMEN'S CHOICE AWARD
AMERICA'S MOST RECOMMENDED
YARN BRAND

Banded Basket Stitch



KEY

- knit on right side, purl on wrong side
- purl on right side, knit on wrong side
- repeat