

BERNAT® MOSAIC GRID KNIT BLANKET



SUPER BULKY



KNIT | SKILL LEVEL: INTERMEDIATE

ABBREVIATIONS

Alt = Alternate(ing)
Approx = Approximately
Beg = Begin(ning)
K = Knit
Rep = Repeat
RS = Right side
Sl1Pwyib = Slip next stitch purlwise with yarn in back of work

Sl1Pwyif = Slip next stitch purlwise with yarn in front of work
St(s) = Stitch(es)
WS = Wrong side

MEASUREMENTS

Approx 56" x 62" [142 x 157.5 cm]

GAUGE

8 sts and 13 rows = 4" [10 cm] in stocking st

INSTRUCTIONS

Notes:

- Every row is worked with one color only.
- Carry color not in use loosely along side of work.

With A, cast on 114 sts (multiple of 12 sts + 6). **Do not** join in rnd. *Working back and forth across needle, knit 3 rows, noting 1st row is WS.*

Proceed as follows (see chart on page 2):

1st row: (RS). With B, K3. *K6. Sl1Pwyib. K1. Sl1Pwyib. K3. Rep from * to last 3 sts. K3.

2nd and alt rows: Using same color as previous row, knit all knit sts and Sl1wyif all slipped sts.

3rd row: With A, K3. *K1. Sl1Pwyib. K5. Sl1Pwyib. K3. Sl1Pwyib. Rep from * to last 3 sts. K3.

MATERIALS

Bernat® Blanket™ (10.5 oz/300 g; 220 yds/201 m)

Contrast A Vintage White (10006) **3 balls**

Contrast B Coal (10040) **3 balls**

Size U.S. 11 (8 mm) circular knitting needle 36" [91.5 cm] long **or size needed to obtain gauge.**

BERNAT® MOSAIC GRID KNIT BLANKET

5th row: With B, K3. *S1Pwyib. K1. Rep from * to last 3 sts. K3.

7th row: With A, K3. *K5. S1Pwyib. K1. S1Pwyib. K3. S1Pwyib. Rep from * to last 3 sts. K3.

9th row: With B, K3. *S1Pwyib. K9. S1Pwyib. K1. Rep from * to last 3 sts. K3.

11th row: With A, K3. *K5. S1Pwyib. K1. S1Pwyib. K4. Rep from * to last 3 sts. K3.

13th row: With B, K3. *S1Pwyib. K1. S1Pwyib. K9. Rep from * to last 3 sts. K3.

15th row: With A, K3. *K1. S1Pwyib. K3. S1Pwyib. K1. S1Pwyib. K4. Rep from * to last 3 sts. K3.

17th row: As 5th row.

19th row: With A. K3. *K1. S1Pwyib. K3. S1Pwyib. K5. S1Pwyib. Rep from * to last 3 sts. K3.

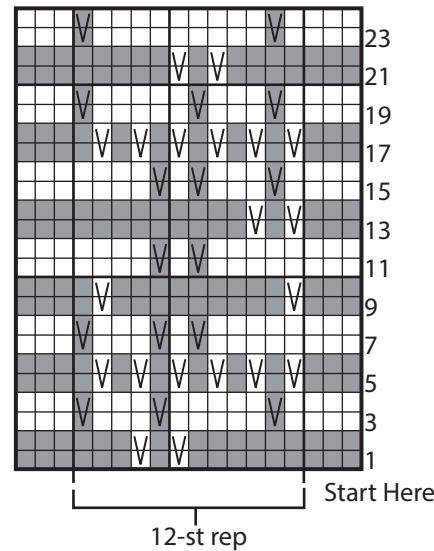
21st row: With B, K3. *K4. S1Pwyib. K1. S1Pwyib. K5. Rep from * to last 3 sts. K3.

23rd row: With A, K3. *K1. S1Pwyib. K9. S1Pwyib. Rep from * to last 3 sts. K3.

24th row: As 2nd row.

Rep 1st to 24th rows for pat until work from beg measures approx 62" [157.5 cm], ending on 12th or 24th row.

Cast off.



Key

- = With A, knit on RS rows and on WS rows.
- = With B, knit on RS rows and on WS rows.
- ∇ = With A, S1Pwyib on RS rows. S1Pwyif on WS rows.
- ∇ = With B, S1Pwyib on RS rows. S1Pwyif on WS rows.

