



KNIT
SKILL LEVEL
EASY

Designed by Julie Farmer

What you will need:

RED HEART® Stardust®: 2 balls
1252 Orange

Susan Bates® Knitting Needles:
4mm [US 6]

Stitch markers, yarn needle

GAUGE: 22 sts = 4¼" [12cm];
30 rows = 4½" [11.5cm] in Lace
stitch. **CHECK YOUR GAUGE.** Use
any size needles to obtain the
gauge.



RED HEART®
Stardust®, Art. E783,
available in tweed
with metallic 1.76 oz (50g), 191 yd
(175m) balls



Lily Crescent Shawlette

*Romantic and lacy, this lovely shawllette adds
both style and warmth all year long. RED
HEART® Stardust® provides just a little sparkle!*

Shawllette measures 64" [163 cm] at widest
point x 10" [26 cm] at longest point.

SPECIAL ABBREVIATIONS

ssk: (1 st dec) Slip next two stitches knitwise
to right needle, insert point of left needle
through front of sts, knit these sts together
through back loop.

P2togtbl: Purl next 2 sts together through
back loop.

PATTERN STITCHES

Lace Pattern (multiple of 11 sts)

Stitch count will increase 1 st on right side
rows and decrease 1 st on wrong side rows
for each repeat.

Row 1 (Right Side): *K4, yo, k1, yo, k4, k2tog;
repeat from *.

Row 2, 4, 6, 8 and 10: *P2tog, p10; repeat
from *.

Row 3: *K5, yo, k1, yo, k3, k2tog; repeat from *.

Row 5: *K6, yo, k1, yo, k2, k2tog; repeat from *.

Row 7: *K7, yo, k1, yo, k1, k2tog; repeat from *.

Row 9: *K8, yo, k1, yo, k2tog; repeat from *.

Row 11: *Ssk, k4, yo, k1, yo, k4; repeat from *.

Row 12, 14, 16 and 18: *P10, p2togtbl; repeat
from *.

Row 13: *Ssk, k3, yo, k1, yo, k5; repeat from *.

Row 15: *Ssk, k2, yo, k1, yo, k6; repeat from *.

Row 17: *Ssk, k1, yo, k1, yo, k7; repeat from *.

Row 19: *Ssk, yo, k1, yo, k8; repeat from *.

Row 20: *P10, p2togtbl; repeat from *.

Work Rows 1-20 for Lace st.

SHAWLETTE

Cast on 286 sts.

Beginning with Row 1, work Rows 1-20 in Lace
st once, then work Rows 1-10 once more.

Row 31 (Right Side): Knit.

Row 32: P143, place marker, purl to end.

Row 33: Knit.

Row 34: Purl.

Begin Short Row Shaping

Short Row 35: Knit to marker, ssk, k5, turn.

Short Row 36: Purl to marker, p2tog, p5, turn.

Short Row 37: Knit to 1 st before last turn,
ssk, k5, turn.

Short Row 38: Purl to 1 st before last turn,
p2tog, p5, turn.

Repeat last 2 rows until there are 9 sts left
after p2tog on a wrong row, purl to end of row.

Next Row: Knit across to 1 st before last turn,
ssk, knit to end of row – 239 sts.

Knit 3 rows.

Bind off.

FINISHING

Weave in ends.

Abbreviations

k = knit; **k2tog** = knit 2 sts together; **mm**
= millimeters; **p** = purl; **p2tog** = purl 2 sts
together; **st(s)** = stitch(es); **tog** = together; **yo**
= yarn over; * or ** = repeat whatever follows
the * or ** as indicated.

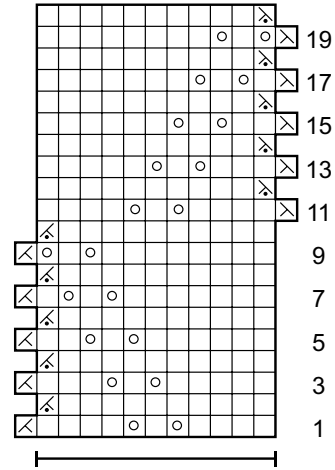
See Next Page for Schematic

SHOP KIT

Stitch Key

- = K on RS, p on WS
- ◻ = P on RS, k on WS
- ⊗ = K2tog
- ⊗ = P2tog
- ⊗ = P2togtbl
- ⊗ = Ssk
- = Yo

Lace Stitch



11-st Repeat

