



SHAWL



COWL

**PATONS® LACE™ OR PATONS® LACE SEQUIN™
CHEVRON LACE SHAWL OR SCARF
(TO KNIT)**

MEASUREMENTS

Approx **17 (32)** [43 (81.5) cm] deep x **36 (60)** [91.5 (152.5) cm] wide.

MATERIALS

Patons® Lace™ (85 g/3 oz; 455 m /498 yds)

	Scarf	Shawl	
Mystic Teal (33302)	1	2	ball(s)

Patons® Lace Sequin™ (70 g/2.5 oz; 314 m/344 yds)

	Scarf	Shawl	
Moonstone (37044)	1	2	ball(s)

Size 4 mm (U.S. 6) knitting needles **or size needed to obtain tension.** Size 4 mm (U.S. 6) circular knitting needle 24" [60 cm] long for Scarf or 36" [90 cm] long for Shawl.

TENSION

24 sts and 30 rows = 4" [10 cm] in stocking st.

STITCH GLOSSARY: www.patonsyarns.com/abbreviations

Alt = Alternate(ing)	Rep = Repeat
Approx = Approximately	RS = Right side
Beg = Beginning	Sl1 = Slip next stitch knitwise
Cont = Continue(ity)	Ssk = Slip next 2 stitches knitwise one at a time. Pass them back onto left-hand needle, then knit through back loops together
K = Knit	St(s) = Stitch(es)
K2tog = Knit next 2 stitches together	WS = Wrong side
Pat = Pattern	Yo = Yarn over
P = Purl	
Pso = Pass slipped stitch over	

INSTRUCTIONS

Note: Move sts onto circular needle when necessary to accommodate all sts.

Beg at center back, with pair of needles, cast on 7 sts. (See Chart I on page 4, noting chart shows 1 side of lace pat and mirror image of pat is worked after center st).

1st row: (RS). K2. (yo. K1) twice. Place marker on last st (center st). yo. K1. yo. K2. 11 sts.

2nd and alt rows to 12th row: K2. Purl to last 2 sts. K2.

Patons®
Lace & Lace *Sequin™*

...a part of your life.

P.O. Box 40, Listowel ON N4W 3H3

www.patonsyarns.com





3rd row: K2. (yo. K3. yo. K1) twice. K1. 15 sts.

5th row: K2. *yo. K1. yo. Sl1. K2tog. pssso. (yo. K1) twice. Rep from * once more. K1. 19 sts.

7th row: K2. *(yo. K1) twice. Sl1. K2tog. pssso. (K1. yo) twice. K1. Rep from * once more. K1. 23 sts.

9th row: K2. *(yo. K1) twice. K1. Sl1. K2tog. pssso. K2. (yo. K1) twice. Rep from * once more. K1. 27 sts.

11th row: K2. *(yo. K1) twice. K2. Sl1. K2tog. pssso. K3. (yo. K1) twice. Rep from * once more. K1. 31 sts.

13th row: K2. *(yo. K2) twice. K1. Sl1. K2tog. pssso. K3. yo. K2. yo. K1. Rep from * once more. K1. 35 sts.

14th row: K2. P2. K1. P9. K1. P5. K1. P9. K1. P2. K2.

15th row: K2. *yo. K1. P3. yo. K2. Sl1. K2tog. pssso. K2. yo. P3. K1. yo. K1. Rep from * once more. K1. 39 sts.

16th row: K2. Knit all knit sts and yo sts and purl all purl sts as they appear to last 2 sts. K2.

17th row: K2. *yo. K1. P5. yo. K1. Sl1. K2tog. pssso. K1. yo. P5. K1. yo. K1. Rep from * once more. K1. 43 sts.

18th row: As 16th row.

19th row: K2. *yo. K1. P7. yo. Sl1. K2tog. pssso. yo. P7. K1. yo. K1. Rep from * once more. K1. 47 sts.

20th row: K2. Purl to last 2 sts. K2.

21st row: K2. *yo. K2tog. K3. yo. K1. yo. K3. Sl1. K2tog. pssso. K3. yo. K1. yo. K3. ssk. yo. K1. Rep from * once more. K1. 51 sts.

22nd row: K2. P6. K1. P9. K1. P13. K1. P9. K1. P6. K2.

23rd row: K2. *yo. K1. K2tog. K2. yo. P3. yo. K2. Sl1. K2tog. pssso. K2. yo. P3. yo. K2. ssk. K1. yo. K1. Rep from * once more. K1. 55 sts.

24th row: As 16th row.

25th row: K2. *yo. K1. yo. (Sl1. K2tog. pssso. K1. yo. P5. yo. K1) twice. Sl1. K2tog. pssso. (yo. K1) twice. Rep from * once more. K1. 59 sts.

26th row: As 16th row.

27th row: K2. *yo. K2. (yo. Sl1. K2tog. pssso. yo. P7) twice. yo. Sl1. K2tog. pssso. yo. K2. yo. K1. Rep from * once more. K1. 63 sts.

28th row: K2. Purl to last 2 sts. K2.

29th row: K2. *yo. K1. yo. K2. (Sl1. K2tog. pssso. K3. yo. K1. yo. K3) twice. Sl1. K2tog. pssso. K2. (yo. K1) twice. Rep from * once more. K1. 67 sts.

30th row: K2. P10. K1. P9. K1. P21. K1. P9. K1. P10. K2.

31st row: K2. *yo. P2. yo. (K2. Sl1. K2tog. pssso. K2. yo. P3. yo) twice. K2. Sl1. K2tog. pssso. K2. yo. P2. yo. K1. Rep from * once more. K1. 71 sts.

32nd row: As 16th row.

33rd row: K2. *yo. P4. yo. (K1. Sl1. K2tog. pssso. K1. yo. P5. yo) twice. K1. Sl1. K2tog. pssso. K1. yo. P4. yo. K1. Rep from * once more. K1. 75 sts.

34th row: As 16th row.

35th row: K2. *yo. P6. (yo. Sl1. K2tog. pssso. yo. P7) twice. yo. Sl1. K2tog. pssso. yo. P6. yo. K1. Rep from * once more. K1. 79 sts.

36th row: As 16th row.

37th row: K2. *yo. K1. K2tog. (yo. K1. yo. K3. Sl1. K2tog. pssso. K3) 3 times. yo. K1. yo. ssk. K1. yo. K1. Rep from * once more. K1. 83 sts.

38th row: K2. P4. *K1. P9. Rep from * to last 7 sts. K1. P4. K2.

39th row: K2. *yo. K1. K2tog. (yo. P3. yo. K2. Sl1. K2tog. pssso. K2) 3 times. yo. P3. yo. ssk. K1. yo. K1. Rep from * once more. K1. 87 sts.

40th row: As 16th row.

41st row: K2. *yo. K1. K2tog. (yo. P5. yo. K1. Sl1. K2tog. pssso. K1) 3 times. yo. P5. yo. ssk. K1. yo. K1. Rep from * once more. K1. 91 sts.

42nd row: As 16th row.

43rd row: K2. *yo. K1. K2tog. (yo. P7. yo. Sl1. K2tog. pssso) 3 times. yo. P7. yo. ssk. K1. yo. K1. Rep from * once more. K1. 95 sts.

44th row: K2. Purl to last 2 sts. K2.

45th row: K2. *yo. K1. Yo. (Sl1. K2tog. pssso. K3. yo. K1. yo. K3) 4 times. Sl1. K2tog. pssso. (yo. K1) twice. Rep from * once more. K1. 99 sts.

46th row: K2. P8. *K1. P9. Rep from * twice more. ** K1. P17. Rep from * to ** 3 times more. K1. P8. K2.

Patons
Lace & Lace *Sequin*

...a part of your life.

P.O. Box 40, Listowel ON N4W 3H3

www.patonsyarns.com



CHEVRON LACE SHAWL OR SCARF 2

47th row: K2. *(yo. K1) twice. (Sl1. K2tog. pss0. K2. yo. P3. yo. K2.) 4 times. Sl1. K2tog. pss0. (K1. yo) twice. K1. Rep from * once more. K1. 103 sts.

48th row: As 16th row.

49th row: K2. *yo. P2. (yo. K1. Sl1. K2tog. pss0. K1. yo. P5) 4 times. yo. K1. Sl1. K2tog. pss0. K1. yo. P2. yo. K1. Rep from * once more. K1. 107 sts.

50th row: As 16th row.

51st row: K2. *yo. P4. (yo. Sl1. K2tog. pss0. yo. P7) 4 times. yo. Sl1. K2tog. pss0. yo. P4. yo. K1. Rep from * once more. K1. 111 sts.

52nd row: K2. Purl to last 2 sts. K2.

53rd row: K2. *yo. K2. (yo. K3. Sl1. K2tog. pss0. K3. yo. K1) 5 times. K1. yo. K1. Rep from * once more. K1. 115 sts.

54th row: K2. P2. *K1. P9. Rep from * 4 times more.** K1. P5. Rep from * to ** 5 times more. K1. P2. K2.

55th row: K2. *yo. K1. (P3. yo. K2. Sl1. K2tog. pss0. K2. yo) 5 times. P3. K1. yo. K1. Rep from * once more. K1. 119 sts.

56th row: As 16th row. .

57th row: K2. *yo. K1. (P5. yo. K1. Sl1. K2tog. pss0. K1. yo) 5 times. P5. K1. yo. K1. Rep from * once more. K1. 123 sts.

58th row: As 16th row.

59th row: K2. *yo. K1. (P7. yo. Sl1. K2tog. pss0. yo) 5 times. P7. K1. yo. K1. Rep from * once more. K1. 127 sts.

60th row: K2. Purl to last 2 sts. K2.

61st row: K2. *yo. K2tog. (K3. yo. K1. yo. K3. Sl1. K2tog. pss0) 5 times. K3. yo. K1. yo. K3. ssk. yo. K1. Rep from * once more. K1. 131 sts.

62nd row: K2. P6. *K1. P9.** Rep from * 4 times more. K1. P13. Rep from * to ** 5 times more. K1. P6. K2.

63rd row: K2. *yo. K1. K2tog. (K2. yo. P3. yo. K2. Sl1. K2tog. pss0) 5 times. K2. yo. P3. yo. K2. ssk. K1. yo. K1. Rep from * once more. K1. 135 sts.

64th row: As 16th row.

Scarf only: Rep 25th to 64 rows for pat once more. Leave all sts on circular needle.

Shawl only: Rep 25th to 64 rows for pat until work from center to bottom point measures approx 31" [78.5 cm], ending with a 64th row of pat. Leave all sts on circular needle.

Both Versions:

Border: With pair of needles, cast on 2 sts.

****1st row:** (RS). yo. K1. Sl1. Pick up and knit first st from spare needle. pss0.

2nd and alt rows: Knit.

3rd row: yo. K2. Sl1. Pick up and knit next st from spare needle. pss0.

5th row: yo. K3. Sl1. Pick up and knit next st from spare needle. pss0.

7th row: yo. K4. Sl1. Pick up and knit next st from spare needle. pss0.

9th row: yo. K5. Sl1. Pick up and knit next st from spare needle. pss0.

11th row: yo. K6. Sl1. Pick up and knit next st from spare needle. pss0.

13th row: K2tog. K5. Sl1. Pick up and knit next st from spare needle. pss0.

15th row: K2tog. K4. Sl1. Pick up and knit next st from spare needle. pss0.

17th row: K2tog. K3. Sl1. Pick up and knit next st from spare needle. pss0.

21st row: K2tog. K2. Sl1. Pick up and knit next st from spare needle. pss0.

23rd row: K2tog. K1. Sl1. Pick up and knit next st from spare needle. pss0.

25th row: K2tog. Sl1. Pick up and knit next st from spare needle. pss0.

26th row: Knit.**

Rep from ** to ** until all sts from circular needle have been worked.



Patons
Lace & Lace *Sequin™*

...a part of your life.

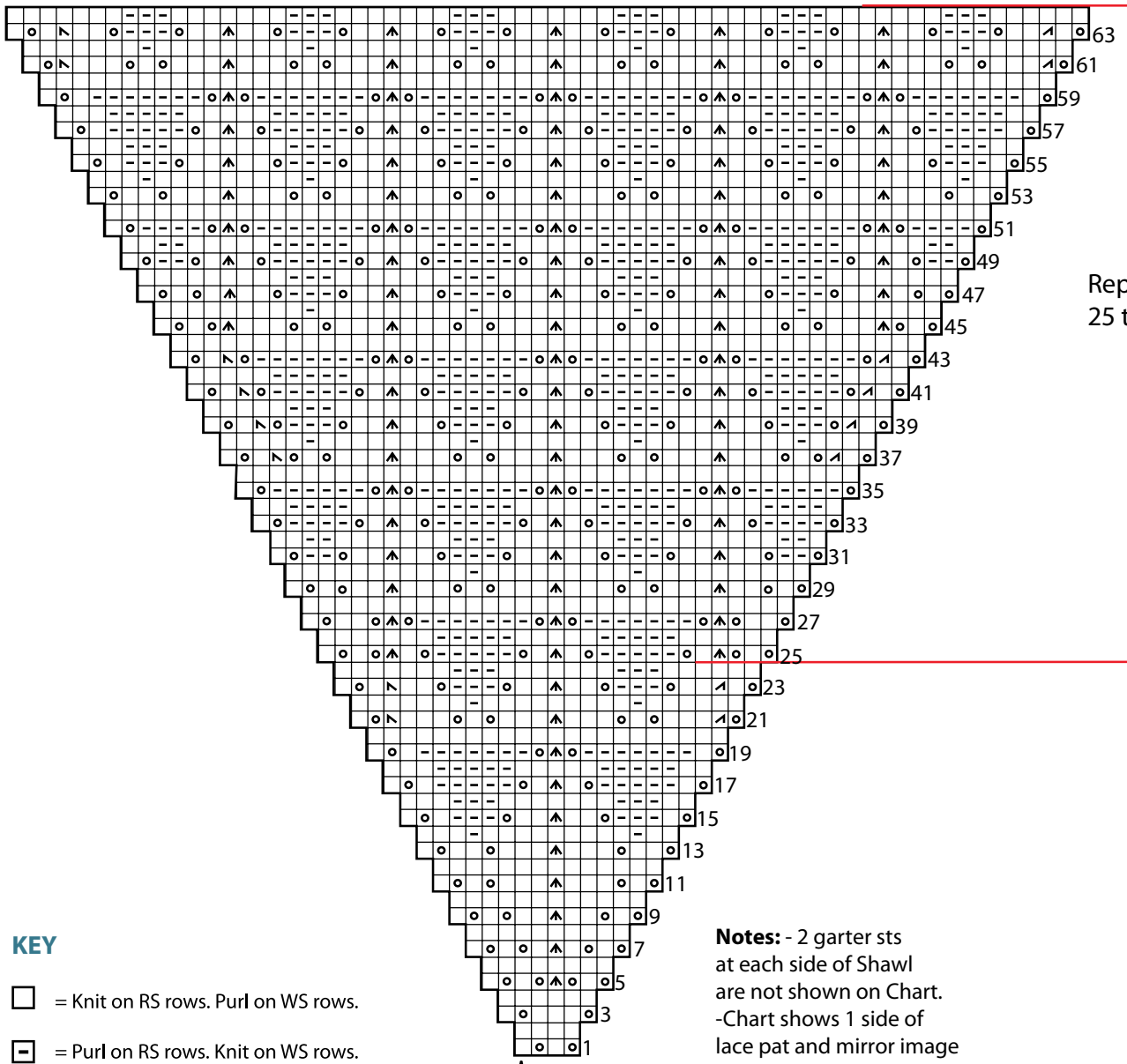
P.O. Box 40, Listowel ON N4W 3H3

www.patonsyarns.com



CHEVRON LACE SHAWL OR SCARF

CHART



Rep rows
25 to 64

KEY

- = Knit on RS rows. Purl on WS rows.
- = Purl on RS rows. Knit on WS rows.
- = yo
- = ssk
- = K2tog
- = S11. K2tog. pss0

Notes: - 2 garter sts
at each side of Shawl
are not shown on Chart.
-Chart shows 1 side of
lace pat and mirror image
of pat is worked after center st.

↑ Start Here
Center St

Patons
Lace & Lace Sequin™

...a part of your life.

P.O. Box 40, Listowel ON N4W 3H3

www.patonsyarns.com



CHEVRON LACE SHAWL OR SCARF