



KNIT | SKILL LEVEL: INTERMEDIATE

ABBREVIATIONS

Alt = Alternate(ing)

Beg = Beginning

Cont = Continue(ity)

K = Knit

K2tog = Knit next 2 stitches together

Pat = Pattern

PssO = Pass slipped stitch over

Rem = Remaining

Rep = Repeat

Rnd(s) = Round(s)

RS = Right side

Sl st = Slip stitch

Sl1 = Slip next stitch knitwise

Ssk = Slip next 2 stitches knitwise one at a time. Pass them back onto left-hand needle, then knit through back loops together

St(s) = Stitch(es)

WS = Wrong side

Yo = Yarn over

SIZES

To fit bust measurement

XS/S 28-34" [71-86.5 cm]

M 36-38" [91.5-96.5 cm]

L 40-42" [101.5-106.5 cm]

XL 44-46" [112-117 cm]

2/3XL 48-54" [122-137 cm]

4/5XL 56-62 [142-157.5 cm]

Finished bust measurement

XS/S 36" [91.5 cm]

M 40" [101.5 cm]

L 44" [112 cm]

XL 48" [122 cm]

2/3XL 56" [142 cm]

4/5XL 64" [162.5 cm]

GAUGE

17 sts and 24 rows = 4" [10 cm] in pat.

INSTRUCTIONS

The instructions are written for smallest size. If changes are necessary for larger sizes the instructions will be written thus (). Numbers for each size are shown in the same color throughout the pattern. When only one number is given in black, it applies to all sizes.

Note: Back, Fronts and Sleeves are worked from top edge down.

MATERIALS

Caron® Simply Soft® (6 oz/170.1 g; 315 yds/288 m)

Sizes XS/S M L XL 2/3XL 4/5XL

Light Country Blue (9709) 5 6 6 7 8 9 balls

Size U.S. 7 [4.5 mm] knitting needles or sizes needed to obtain gauge.

BACK

Beg from top edge, cast on **79** (79-94-94-124-139) sts.

Proceed in Lace Pat A (multiple of 15 sts + 4) as follows:

1st row: (RS). K2 (selvedge sts). *K4. K2tog. (K1. yo) twice. K1. ssk. K4. Rep from *, ending with K2 (selvedge sts).

2nd and alt rows: Purl.

3rd row: K2. *K3. K2tog. K1. yo. K3. yo. K1. ssk. K3. Rep from *, ending with K2.

5th row: K2. *K2. K2tog. K1. yo. K5. yo. K1. ssk. K2. Rep from *, ending with K2.

7th row: K2. *K1. K2tog. K1. yo. K7. yo. K1. ssk. K1. Rep from *, ending with K2.

9th row: K2. *K4. K2tog. (K1. yo) twice. K1. ssk. K4. Rep from *, ending with K2.

11th row: K2. *K3. K2tog. K1. yo. K3. yo. K1. ssk. K3. Rep from *, ending with K2.

13th row: K2. *K2. K2tog. K1. yo. K5. yo. K1. ssk. K2. Rep from *, ending with K2.

15th row: K2. *K1. K2tog. K1. yo. K7. yo. K1. ssk. K1. Rep from *, ending with K2.

16th row: Purl.

Rep last 16 rows for Lace Pat A **9** (9-9-9-9-10) times more.

Proceed in Lace Pat B as follows:

1st row: (RS). K2 (selvedge sts). *K4. K2tog. (K1. yo) twice. K1. ssk. K4. Rep from *, ending with K2 (selvedge sts).

2nd and alt rows: Purl.

3rd row: K2. *K3. K2tog. K1. yo. K3. yo. K1. ssk. K3. Rep from *, ending with K2.

5th row: K2. *K2. K2tog. K1. yo. K5. yo. K1. ssk. K2. Rep from *, ending with K2.

7th row: K2. *K1. K2tog. K1. yo. K2. K2tog. yo. K3. yo. K1. ssk. K1. Rep from *, ending with K2.

9th row: K2. *K4. K2tog. (K1. yo) twice. K1. ssk. K4. Rep from *, ending with K2.

11th row: K2. *K3. K2tog. K1. yo. K3. yo. K1. ssk. K3. Rep from *, ending with K2.

13th row: K2. *K2. K2tog. K1. yo. K5. yo. K1. ssk. K2. Rep from *, ending with K2.

15th row: K2. *K1. K2tog. K1. yo. K2. K2tog. yo. K3. yo. K1. ssk. K1. Rep from *, ending with K2.

17th row: K2. *K3. yo. K2tog. K1. yo. Sl1. K2tog. pssso. yo. K1. ssk. yo. K3. Rep from *, ending with K2.

19th row: K2. *K4. yo. K2tog. ssk. yo. K1. ssk. yo. K4. Rep from *, ending with K2.

21st row: K2. *K5. yo. K2tog. K1. ssk. yo. K5. Rep from *, ending with K2.

23rd row: K2. *K6. yo. Sl1. K2tog. pssso. yo. K6. Rep from *, ending with K2.

24th row: Purl.
Knit 3 rows (garter st). Cast off knitwise (WS).

RIGHT FRONT

Beg from top edge, cast on **42** (57-57-57-72-87) sts.

Proceed in Lace Pat A as follows:

1st row: (RS). K2. Beg with 8th st of Lace Pat A (refer to chart), then cont working Lace Pat A to last 2 sts. K2. **Note:** This will make 2½ reps of Lace Pat A across row.

2nd to 16th rows: Cont as established until 16 rows of Lace Pat A have been completed.

Rep last 16 rows for Lace Pat A **9** (9-9-9-9-10) times more.

Proceed in Lace Pat B as follows:

1st row: (RS). K2. Beg with st 8 of Lace Pat B (refer to chart on page 4), then cont working Lace Pat B to last 2 sts. K2. **Note:** This will make 2½reps of Lace Pat B across row.

2nd to 24th rows: Cont as established until 24 rows of Lace Pat B have been completed. Knit 3 rows (garter st). Cast off knitwise (WS).

LEFT FRONT

Beg from top edge, cast on **42** (57-57-57-72-87) sts.

Proceed in Lace Pat A as follows:

1st row: (RS). K2. Work in Lace Pat A to last 10 sts, then work first 8 sts of Lace Pat A. K2. **Note:** This will make 2½ reps of Lace Pat A across row.

2nd to 16th rows: Cont as established until 16 rows of Lace Pat A have been completed.

Rep last 16 rows for Lace Pat A **9** (9-9-9-9-10) times more.

Proceed in Lace Pat B as follows:

1st row: (RS). K2. Work in Lace Pat B across to last 10 sts, then work first 8 sts of Lace Pat B. K2. **Note:** This will make 2½ reps of Lace Pat B across row.

2nd to 24th rows: Cont as established until 24 rows of Lace Pat B have been completed.

Knit 3 rows (garter st). Cast off knitwise (WS).

SLEEVES

Beg with top edge, cast on **64** (64-79-79-79-94) sts.

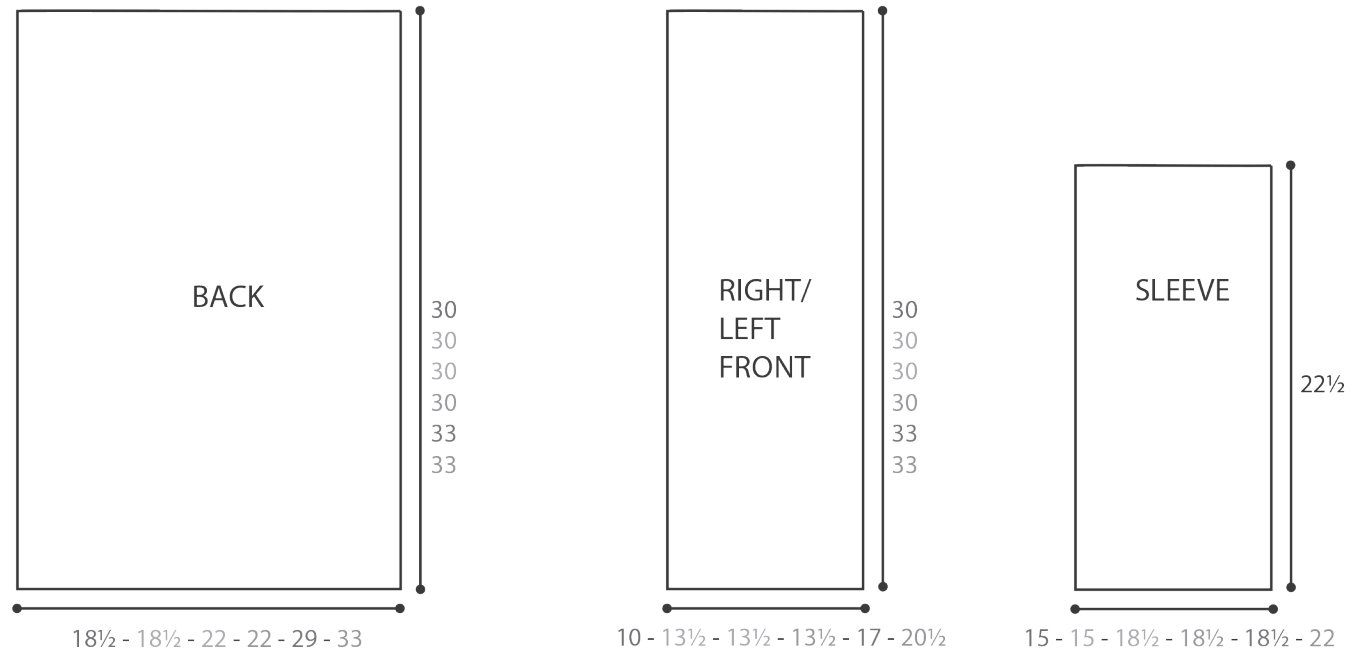
Work 1st to 16th rows of Lace Pat A as given for Back, maintaining 2 selvedge sts on each end of every row **6** (6-7-7-7-7) times, ending at **8th** (8th-16th-16th-16th-16th) row.

Work 1st to 24th rows of Lace Pat B as given for Back, maintaining 2 selvedge sts on each end of every row twice.

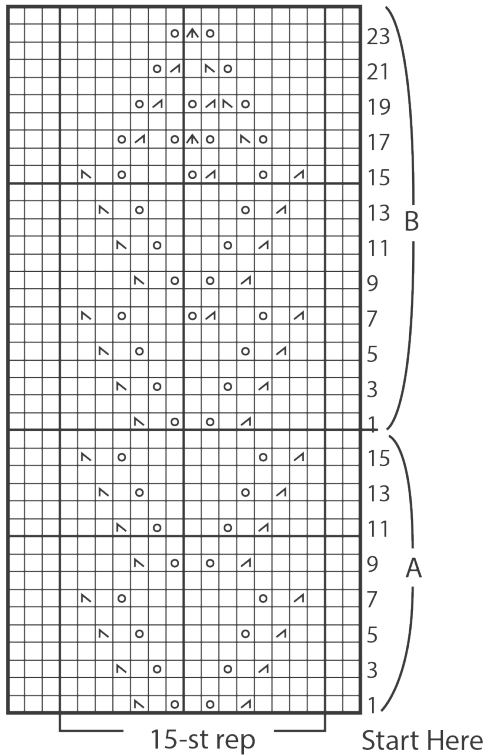
Knit 3 rows (garter st). Cast off knitwise (WS).

FINISHING

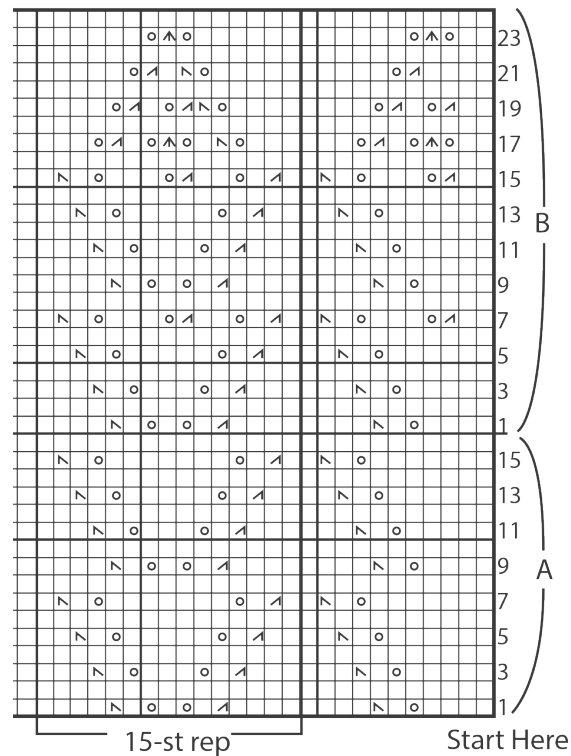
Sew shoulder seams. Sew Sleeves in place. Sew side and Sleeve seams.



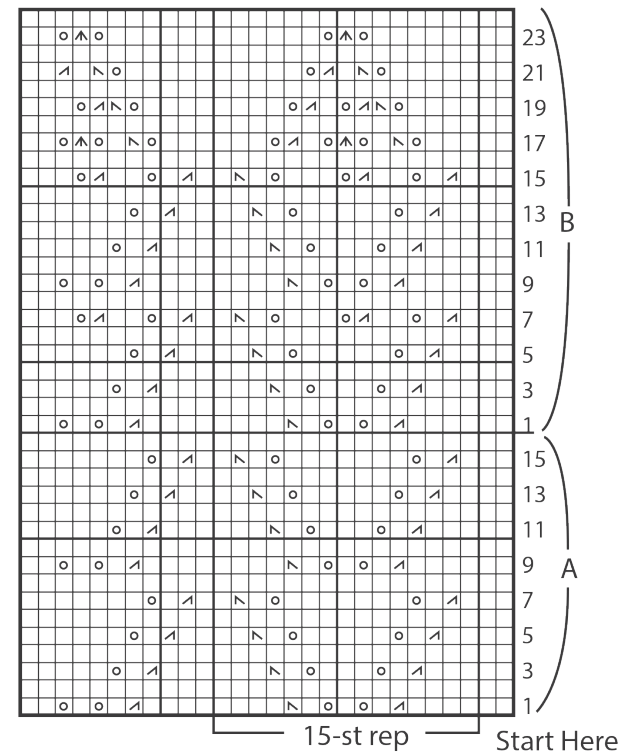
Back



Right Front



Left Front



Key

- = Knit on RS rows. Purl on WS rows.
- ▤ = K2tog
- ▥ = ssk
- ▧ = S11. K2tog. pss0.
- ⊠ = yo