



KNIT | SKILL LEVEL: INTERMEDIATE

ABBREVIATIONS

Alt = Alternate(ing)
Beg = Begin(ning)
Cont = Continue
Dec = Decrease(ing)
Inc = Increase(ing)
K = Knit
K2tog = Knit next stitches together
P = Purl

P2togtbl = Purl next 2 stitches together through back loops
Pat = Pattern
Pssso = Pass slipped stitch over
Rem = Remain(ing)
Rep = Repeat
RS = Right side
Sl1K = Slip next stitch knitwise

Ssk = Slip next 2 stitches knitwise one at a time. Pass them back onto left-hand needle, then knit through back loops together
St(s) = Stitches
Yo = Yarn over

SIZES

To fit bust measurement

XS/S 28-34" [71-86.5 cm]
M 36-38" [91.5-96.5 cm]
L 40-42" [101.5-106.5 cm]
XL 44-46" [112-117 cm]
2/3XL 48-54" [122-137 cm]
4/5XL 56-62" [142-157.5 cm]

GAUGE

22 sts and 28 rows = 4" [10 cm] in stocking st with larger needles.

INSTRUCTIONS

The instructions are written for smallest size. If changes are necessary for larger sizes the instructions will be written thus (). Numbers for each size are shown in the same color throughout the pattern. When only one number is given in black, it applies to all sizes.

MATERIALS

Bernat® Softee® Cotton™ (4.2 oz/120 g; 254 yds/232 m)

Sizes	XS/S	M	L	XL	2/3XL	4/5XL	
Warm Red (69007)	5	5	6	6	7	8	balls

Sizes U.S. 5 (3.75 mm) and U.S. 6 (4 mm) knitting needles **or size needed to obtain gauge.** Size U.S. 5 (3.75 mm circular knitting needle 36" [91.5 cm] long. 1 stitch holder. 6 buttons. Yarn needle.

Finished bust

XS/S 36" [91.5 cm]
M 38" [96.5 cm]
L 44" [112 cm]
XL 46" [117 cm]
2/3XL 54" [137 cm]
4/5XL 62" [157.5 cm]

BACK

With smaller needles, cast on **92 (99-113-120-141-162)** sts.

1st row: (RS). P1. *P1. K2. yo. ssk. P2. Rep from * to end of row.

2nd row: *K2. P4. K1. Rep from * to last st. K1.

3rd row: P1. *P1. K2tog. yo. K2. P2. Rep from * to end of row.

4th row: As 2nd row.

These 4 rows form Eyelet Rib Pat. See chart on page 4.

Work a further 8 rows in Eyelet Rib Pat, inc 3 sts evenly across last row. **95 (102-116-123-144-165)** sts.

Change to larger needles and proceed in Lace Pat as follows (see Chart on page 4):

1st row: (RS). K3. *ssk. K5. yo. Rep from * to last st. K1.

2nd and alt rows: Purl.

3rd row: K3. *ssk. K4. yo. K1. Rep from * to last st. K1.

5th row: K3. *ssk. K3. yo. K2. Rep from * to last st. K1.

7th row: K3. *ssk. K2. yo. K3. Rep from * to last st. K1.

9th row: K3. *ssk. K1. yo. K4. Rep from * to last st. K1.

11th row: K3. *ssk. yo. K5. Rep from * to last st. K1.

13th row: K1. *yo. K5. K2tog. Rep from * to last 3 sts. K3.

15th row: K2. *yo. K4. K2tog. K1. Rep from * to last 2 sts. K2.

17th row: K3. *yo. K3. K2tog. K2. Rep from * to last st. K1.

19th row: K4. *yo. K2. K2tog. K3. Rep from * to end of row.

21st row: K5. *yo. K1. K2tog. K4. Rep from * to last 6 sts. yo. K1. K2tog. K3.

23rd row: K6. *yo. K2tog. K5. Rep from * to last 5 sts. yo. K2tog. K3.

24th row: Purl.

These 24 rows form Lace Pat.

Cont in Lace Pat until work from beg measures approx 12" [30.5 cm], ending on a 16th row of Lace Pat.

Armhole shaping: 1st row:

(RS). Cast off **3 (3-10-10-17-17)** sts. yo. K2. K2tog. K2. *yo. K3. K2tog. K2. Rep from * to last st. K1.

2nd row: Cast off **3 (3-10-10-17-17)** sts. Purl to end of row. **89 (96-96-103-110-131)** sts.

3rd row: ssk. yo. K1. K2tog. K3. *yo. K2. K2tog. K3. Rep from * to last 4 sts. K2. K2tog.

4th row: Purl.

5th row: ssk. K5. *yo. K1. K2tog. K4. Rep from * to last 3 sts. K1. K2tog.

6th row: Purl.

7th row: ssk. K4. *yo. K2tog. K5. Rep from * to last 2 sts. K2tog.

8th row: P2tog. Purl to last 2 sts. P2togtbl. **81 (88-88-95-102-123)** sts.

Beg with 1st row of Lace Pat, cont even in pat until armhole measures **7½ (8-8-8½-9-10)" [19 (20.5-20.5-21.5-23-25.5) cm]**, ending on a WS row.

Shape shoulders: Cast off **11 (12-12-13-14-19)** sts beg next 4 rows.

Leave rem **37 (40-40-43-46-47)** sts on a st holder.

LEFT FRONT

With smaller needles, cast on **43 (50-57-64-71-85) sts.

Work 12 rows in Eyelet Rib Pat as given for Back, inc 3 sts evenly across last row. **46 (53-60-67-74-88)** sts.

Change to larger needles and proceed in Lace Pat as given for Back until work from beg measures approx 12" [30.5 cm], ending on a 16th row of Lace Pat.**

Armhole and V-neck shaping:

1st row: (RS). Cast off **3 (3-10-10-17-17)** sts. yo. K2. K2tog. K2.

*yo. K3. K2tog. K2. Rep from * to last 8 sts. yo. K3. K2tog. K1. K2tog.

42 (49-49-56-56-70) sts.

2nd row: Purl.

3rd row: ssk. yo. K1. K2tog. K3. *yo. K2. K2tog. K3. Rep from * to last 6 sts. yo. K2. (K2tog) twice.

4th row: Purl.

5th row: ssk. K6. *yo. K1. K2tog. K4. Rep from * to last 4 sts. K2. K2tog.

6th row: Purl.

7th row: ssk. K6. *yo. K2tog. K5. Rep from * to last 2 sts. K2tog.

8th row: Purl to last 2 sts. P2togtbl. **35 (42-42-49-49-63)** sts.

Dec 1 st at V-neck edge only on next and every following alt row

4 (12-12-20-16-20) times more, then every following 4th row from previous dec

8 (5-5-2-4-4) times more. **22 (24-24-26-28-38)** sts.

Cont even in pat until work from beg measures same length as for Back to beg of shoulder shaping, ending on a WS row.

Shape shoulder: Cast off **11** (**12-12-13-14-19**) sts beg next row. Work 1 row even. Cast off rem **11** (**12-12-13-14-19**) sts.

RIGHT FRONT

Work from ** to ** as given for Left Front.

Armhole and V-neck shaping:

1st row: (RS). ssk. K1. *yo. K3. K2tog. K2. Rep from * to last st. K1.

2nd row: Cast off **3** (**3-10-10-17-17**) sts. Purl to end of row. **42** (**49-49-56-56-70**) sts.

3rd row: ssk. K1. *yo. K2. K2tog. K3. Rep from * to last 4 sts. yo. (K2tog) twice.

4th row: Purl.

5th row: ssk. K1. *yo. K1. K2tog. K4. Rep from * to last 2 sts. K1. K2tog.

6th row: Purl.

7th row: ssk. K1. *yo. K2tog. K5. Rep from * to last 7 sts. yo. K2tog. K3. K2tog.

8th row: P2tog. Purl to end of row. **35** (**42-42-49-49-63**) sts.

Dec 1 st at V-neck edge only on next and every following alt row **4** (**12-12-20-16-20**) times more, then every following 4th row from previous dec **8** (**5-5-2-4-4**) times more. **22** (**24-24-26-28-38**) sts.

Cont even in pat until work from beg measures same length as for Back to beg of shoulder shaping, ending on a RS row.

Shape shoulder: Cast off **11** (**12-12-13-14-19**) sts beg next row. Work 1 row even. Cast off rem **11** (**12-12-13-14-19**) sts.

SLEEVES

With smaller needles, cast on **57** (**57-64-64-71-71**) sts.

Work 8 rows in Eyelet Rib Pat as given for Back, inc 3 sts evenly across last row. **60** (**60-67-67-74-74**) sts.

Change to larger needles and proceed in Lace Pat as given for Back, inc 1 st at each end on 5th and every following **6th** (**4th-4th-2nd-2nd-2nd**) row to **68** (**72-77-83-90-98**) sts, taking inc sts into pat.

Cont even in pat until work from beg measures 7½" [19 cm], ending on a WS row.

Shape top: Cast off **2** (**2-3-3-6-8**) sts beg next 2 rows. **64** (**68-71-77-78-82**) sts rem.

Dec 1 st each end of needle on 3rd and every following alt row **14** (**15-15-18-20**) times more.

Dec 1 st each end of needle on next **2** (**2-2-4-2-2**) rows.

Cast off 3 sts beg next 4 rows.

Cast off rem **18** (**20-23-25-24-24**) sts.

FINISHING

Pin garment pieces to measurements. Cover with a damp cloth, leaving to dry.

Buttonhole and button band:

Sew shoulder seams. With RS of work facing and circular needle, pick up and knit 63 sts up Right Front edge to V-neck shaping. Pick up and knit **46** (**50-50-52-56-60**) sts up Right Front V-neck edge to shoulder seam.

K37 (**40-40-43-46-47**) from back st holder. Pick up and knit **46** (**50-50-52-56-60**) sts down Left Front V-neck edge. Pick up and knit 63 sts down Left Front edge to lower edge. **255** (**266-266-273-284-293**) sts.

Next row: (WS). Knit.

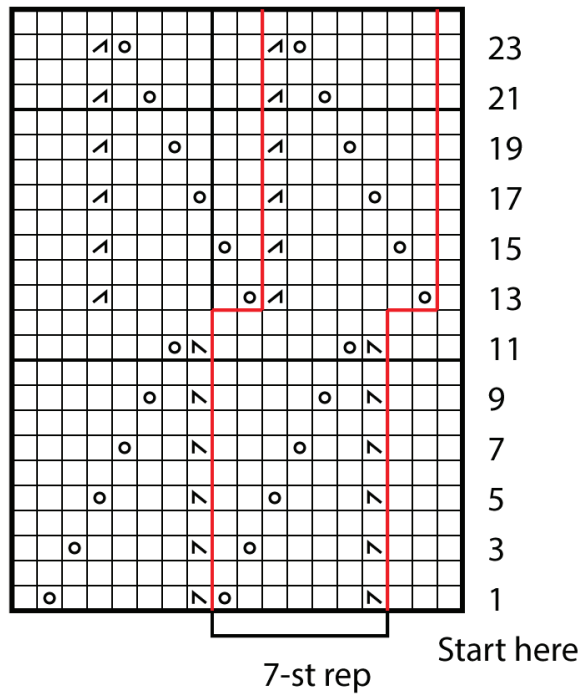
Next row: K1. *yo. K2tog. K7. Rep from * 4 times more. Knit to end of row.

Next row: Knit.

Cast off purlwise (RS).

Sew in Sleeves. Sew side and sleeve seams. Sew buttons to correspond to buttonholes.

LACE PAT CHART



Key
 = K2tog
 = ssk
 = yo

