



Hooded Lace Scarf

When the weather is cold, be prepared with this fashionable scarf. The knitted lace pattern adds a feminine touch to the softly shaded yarn.

Designed by Jodi Lewanda.

Scarf measures 7" wide (at each narrow end) x 33" long, not including fringe. Hood measures 9½" tall.

RED HEART BOUTIQUE™ "Eclipse™": 3 balls 9801 Storm Blue.

Knitting Needles: 6.5mm [US 10½].
Yarn needle.

GAUGE: 18½ sts = 4"; 20 rows = 4" in Lace pattern.
CHECK YOUR GAUGE. Use any size needles to obtain the gauge.

Special Stitch

ssk = slip next two stitches knitwise to right needle, insert point of left needle through front of sts, knit these sts together through back loop.

Pattern Stitch

Lace Pattern (multiple of 11 sts)

Row 1 (Right Side): K1, *k2tog, k4, yo, k1, yo, ssk, k1, p1; repeat from * to last 10 sts, k2tog, k4, yo, k1, yo, ssk, k1.

Row 2 and all Wrong Side rows: P10, *k1, p10: repeat from * to last 12 sts, k1, p11.

Row 3: K1, *k2tog, k3, yo, k1, yo, k1, ssk, k1, p1; repeat from * to last 10 sts, k2tog, k3, yo, k1, yo, k1, ssk, k1.

Row 5: K1, *k2tog, k2, yo, k1, yo, k2, ssk, k1, p1; repeat from * to last 10 sts, k2tog, k2, yo, k1, yo, k2, ssk, k1.

Row 7: K1, *k2tog, [k1, yo] twice, k3, ssk, k1, p1; repeat from * to last 10 sts, k2tog, [k1, yo] twice, k3, ssk, k1.

Row 9: K1, *k2tog, yo, k1, yo, k4, ssk, k1, p1; repeat from * to last 10 sts, k2tog, yo, k1, yo, k4, ssk, k1.

Row 11: Repeat Row 7.

Row 13: Repeat Row 5.

Row 15: Repeat Row 3.

Row 16: Repeat Row 2.

Repeat Rows 1–16 for Lace Pattern.

HOODED SCARF

CO 110 sts.

Row 1 (Wrong Side): Knit.

Begin Lace Pattern

Work in Lace Pattern for 48 rows.

Next Row (Right Side): Work Row 1 of Lace Pattern over first 44 sts; join another ball of yarn and BO next 22 sts (for front of hood); work Row 1 of Lace Pattern over last 44 sts—44 sts each side.

Work both sides at same time with separate balls of yarn.

Next Row (Wrong Side): Continue in Lace Pattern as established to 2 sts before end of first side, p2tog tbl; on 2nd side, p2tog, continue in Lace Pattern as established to end of second side—43 sts on each side.

Next Row (Right Side): Continue in Lace Pattern as established over all sts of both sides.

Repeat last 2 rows until 33 sts remain on each side.

Continue even (without decreasing) in Lace Pattern as established until piece measures about 33" from cast-on edge, end with a Row 16 of Lace Pattern.

Next Row (Right Side): Purl.

BO knitwise.



HOODED LACE SCARF | KNIT

FINISHING

Fold hood in half lengthwise and sew back seam.
Weave in ends.

Fringe

Cut 42 pieces of yarn, 14" long. Hold 3 strands together and fold in half. Insert hook through edge of scarf and into fold. Draw fold through, forming a loop. Insert ends of strands through loop and pull to tighten. Repeat this process to attach 7 fringes to each end of scarf.

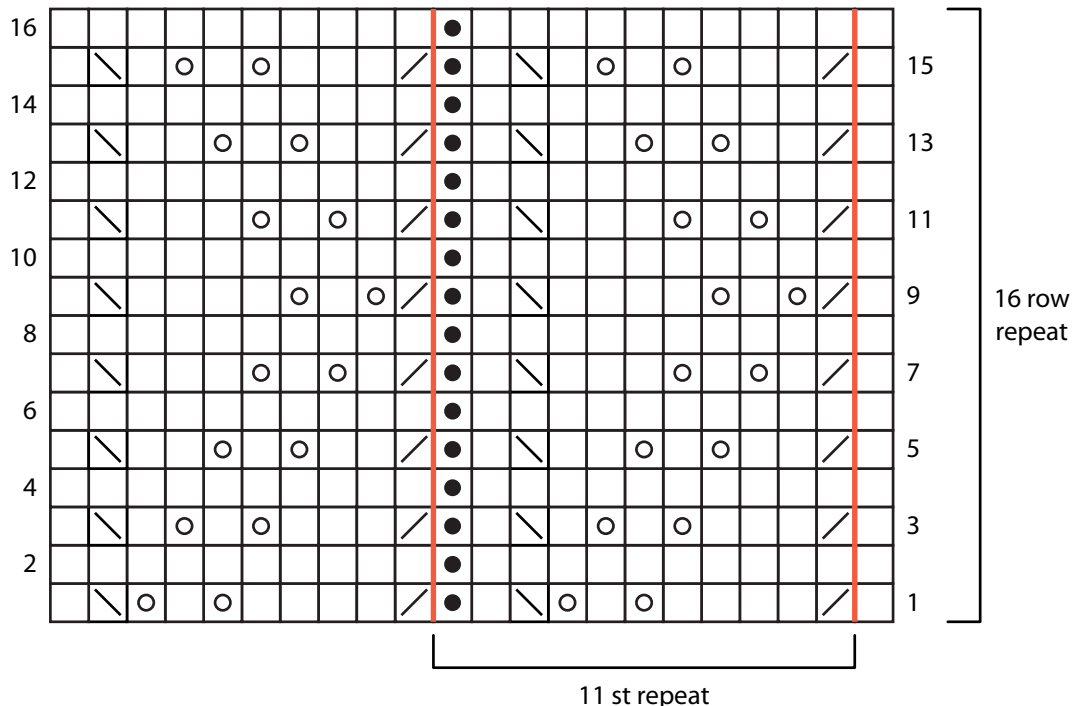
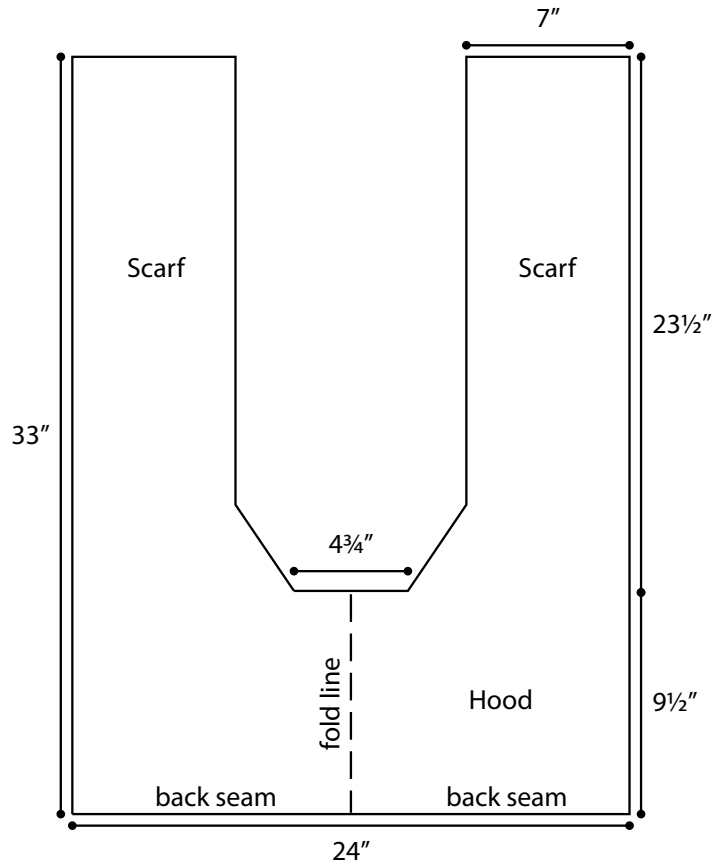
Pompom (optional)

Make a 3" pompom and sew to top of hood.



RED HEART® BOUTIQUE™
"Eclipse™", Art. E775 available in
2.5 oz (70 g), 175 yd (160 m) balls.

ABBREVIATIONS: **BO** = bind off; **CO** = cast on; **k** = knit; **k2tog** = knit next 2 sts together; **p** = purl; **p2tog** = purl next 2 sts together; **st(s)** = stitch(es); **tbl** = through back loop; **yo** = yarn over; **[]** = work directions in brackets the number of times specified; * = repeat whatever follows the * as indicated.



- k on RS, p on WS
- p on RS, k on WS
- yarn over
- k2tog
- ssk: sl, sl, knit