



 CROCHET | SKILL LEVEL: EXPERIENCED

SIZES

To fit bust measurement

Extra-Small/Small
28-34" [71-86.5 cm]

Medium
36-38" [91.5-96.5 cm]

Large/Extra-Large
40-46" [101.5-117 cm]

2/3 Extra-Large
48-54" [122-137 cm]

4/5 Extra-Large
56-62" [142-157.5 cm]

Finished bust

X-Small/Small 36" [91.5 cm]

Medium 40" [101.5 cm]

Large/Extra-Large 46" [117 cm]

2/3 Extra-Large 56" [142 cm]

4/5 Extra-Large 64" [162.5 cm]

GAUGE

22 dc and 12 rows = 4" [10 cm].

INSTRUCTIONS

The instructions are written for smallest size. If changes are necessary for larger sizes the instructions will be written thus (). Numbers for each size are shown in the same color throughout the pattern. When only one number is given in black, it applies to all sizes.

BACK

Note: Ch 3 at beg of rnd counts as dc.

Beg at center Back, ch 5. Join with sl st to first ch to form a ring. (See chart on page 4)

1st rnd: Ch 3. 15 dc in ring. Join with sl st to top of ch 3.

2nd rnd: Ch 3. (1 dc. Ch 2. 2 dc) in same sp as sl st. *Miss next dc. (2 dc. Ch 2. 2 dc) in next dc. Rep from * around. Miss last dc. Join with sl st to top of ch 3.

3rd rnd: Sl st in next dc and ch-2 sp. Ch 3. (2 dc. Ch 2. 3 dc) in same sp as last sl st - beg shell made. *(2 dc. Ch 3. 2 dc) in next ch-2 sp. (3 dc. Ch 2. 3 dc) in next ch-2 sp - shell made. Rep from * around, ending with (2 dc. Ch 3. 2 dc) in last ch-2 sp. Join with sl st to top of ch 3.

4th rnd: Sl st in each of next 2 dc and ch-2 sp. Beg shell in same sp as last sl st. *Ch 2. 10 dc in next ch-3 sp. Ch 2.** Shell in ch-2 sp of next shell. Rep from * around, ending at **. Join with sl st to top of ch 3.

5th rnd: Sl st in each of next 2 dc and ch-2 sp. Beg shell in same sp as last sl st. *Ch 2. Miss next ch-2 sp. (1 dc in next dc. Ch 1) 9 times. 1 dc in next dc. Ch 2. Miss next ch-2 sp.** Shell in ch-2 sp of next shell. Rep from * around, ending at **. Join with sl st to top of ch 3.

6th rnd: Sl st in each of next 2 dc and ch-2 sp. [Ch 3. 2 dc. (Ch 2. 3 dc) twice] all in same sp as last sl st. *Ch 2. Miss next ch-2 sp. (1 sc in next ch-1 sp. Ch 3) 8 times. 1 sc in next

MATERIALS

Patons® Grace™ (1.75 oz/50 g; 136 yds/125 m)

Sizes XS/S M L/XL 2/3XL 4/5XL

Clay (62044) 6 7 10 12 14 balls

Size U.S. E/4 (3.5 mm) crochet hook **or size needed to obtain gauge.** 2 beads (optional).

ABBREVIATIONS:

Beg = Beginning

Ch = Chain(s)

Dc = Double crochet

Pat = Pattern

Rem = Remaining(s)

Rep = Repeat

Rnd(s) = Round(s)

RS = Right side

Sl st = Slip stitch

Sp(s) = Space(s)

WS = Wrong side

ch-1 sp.** Miss next ch-2 sp. (Ch 2. 3 dc) 3 times in ch-2 sp of next shell. Rep from * around, ending at **. Ch 2. Miss last ch-2 sp. Join with sl st to top of ch 3.

7th rnd: Sl st in each of next 2 dc and ch-2 sp. Beg shell in same sp as last sl st. Ch 2. Shell in next ch-2 sp. *Ch 2. Miss next ch-2 sp. (1 sc in next ch-3 sp. Ch 3) 7 times. 1 sc in next ch-3 sp.** Miss next ch-2 sp. (Ch 2. Shell in next ch-2 sp) twice. Rep from * around, ending at **. Ch 2. Miss last ch-2 sp. Join with sl st to top of ch 3.

8th rnd: Sl st in each of next 2 dc and ch-2 sp. Beg shell in same sp as last sl st. (Shell in next ch-2 sp) twice. *Ch 2. Miss next ch-2 sp. (1 sc in next ch-3 sp. Ch 3) 6 times. 1 sc in next ch-3 sp. Ch 2. Miss next ch-2 sp.** (Shell in next ch-2 sp) 3 times. Rep from * around, ending at **. Join with sl st to top of ch 3.

9th rnd: Sl st in each of next 2 dc and ch-2 sp. Beg shell in same sp as last sl st. *(Ch 2. 3 dc) 3 times in ch-2 sp of next shell. Ch 2. Shell in ch-2 sp of next shell. Ch 2. Miss next ch-2 sp. (1 sc in next ch-3 sp. Ch 3) 5 times. 1 sc in next ch-3 sp. Ch 2. Miss next ch-2 sp.** Shell in ch-2 sp of next shell. Rep from * around, ending at **. Join with sl st to top of ch 3.

10th rnd: Sl st in each of next 2 dc and ch-2 sp. Beg shell in same sp as last sl st. *Ch 2. Miss next ch-2 sp. (Shell in next ch-2 sp. Ch 2) twice. Miss next ch-2 sp. Shell in ch-2 sp of

next shell. Ch 2. Miss next ch-2 sp. (1 sc in next ch-3 sp. Ch 3) 4 times. 1 sc in next ch-3 sp. Ch 2. Miss next ch-2 sp.** Shell in ch-2 sp of next shell. Rep from * around, ending at **. Join with sl st to top of ch 3.

11th rnd: Sl st in each of next 2 dc and ch-2 sp. Beg shell in same sp as last sl st. *Ch 2. Miss next ch-2 sp. (Shell in next ch-2 sp) 3 times. Ch 2. Miss next ch-2 sp. Shell in ch-2 sp of next shell. Ch 2. Miss next ch-2 sp. (1 sc in next ch-3 sp. Ch 3) 3 times. 1 sc in next ch-3 sp. Ch 2. Miss next ch-2 sp.** Shell in ch-2 sp of next shell. Rep from * around, ending at **. Join with sl st to top of ch 3.

12th rnd: Sl st in each of next 2 dc and ch-2 sp. Beg shell in same sp as last sl st. *Ch 2. Miss next ch-2 sp. Shell in ch-2 sp of next shell. (Ch 2. 3 dc) 3 times in ch-2 sp of next shell. Ch 2. (Shell in ch-2 sp of next shell. Ch 2. Miss next ch-2 sp) twice. (1 sc in next ch-3 sp. Ch 3) twice. 1 sc in next ch-3 sp. Ch 2. Miss next ch-2 sp.** Shell in ch-2 sp of next shell. Rep from * around, ending at **. Join with sl st to top of ch 3.

13th rnd: Sl st in each of next 2 dc and ch-2 sp. Beg shell in same sp as last sl st. *Ch 2. Miss next ch-2 sp. Shell in ch-2 sp of next shell. Ch 2. Miss next ch-2 sp. (Shell in next ch-2 sp. Ch 2) twice. Miss next ch-2 sp. (Shell in ch-2 sp of next shell. Ch 2. Miss next ch-2 sp) twice. 1 sc in next ch-3 sp. Ch 3. 1 sc in next ch-3 sp. Ch 2. Miss next ch-2 sp.** Shell in ch-2 sp

of next shell. Rep from * around, ending at **. Join with sl st to top of ch 3.

14th rnd: Sl st in each of next 2 dc and ch-2 sp. Beg shell in same sp as last sl st. *(Ch 2. Miss next ch-2 sp. Shell in ch-2 sp of next shell) twice. Shell in next ch-2 sp. Shell in ch-2 sp of next shell. (Ch 2. Miss next ch-2 sp. Shell in ch-2 sp of next shell) twice. Ch 2. Miss next ch-2 sp. 1 sc in next ch-3 sp. Ch 2. Miss next ch-2 sp.** Shell in ch-2 sp of next shell. Rep from * around, ending at **. Join with sl st to top of ch 3.

15th rnd: Sl st in each of next 2 dc and ch-2 sp. Beg shell in same sp as last sl st. *(Ch 2. Miss next ch-2 sp. Shell in ch-2 sp of next shell) twice. (Ch 2. 3 dc) 3 times in ch-2 sp of next shell. (Ch 2. Shell in ch-2 sp of next shell. Miss next ch-2 sp) twice. Ch 2. Shell in ch-2 sp of next shell. Ch 2. Miss next (ch-2 sp, sc and ch-2 sp).** Shell in ch-2 sp of next shell. Rep from * around, ending at **. Join with sl st to top of ch 3.

16th rnd: Sl st in each of next 2 dc and ch-2 sp. Beg shell in same sp as last sl st. *(Ch 2. Miss next ch-2 sp. Shell in ch-2 sp of next shell) twice. Ch 2. Miss next ch-2 sp. (Shell in next ch-2 sp. Ch 2) twice - corner 2 shells and ch-2 sp made. Miss next ch-2 sp. (Shell in ch-2 sp of next shell. Ch 2. Miss next ch-2 sp) 3 times.** Shell in ch-2 sp of next shell. Rep from * around, ending at **. Join with sl st to top of ch 3.

17th rnd: Sl st in each of next 2 dc and ch-2 sp. Beg shell in same sp as

last sl st. *(Ch 2. Miss next ch-2 sp. Shell in ch-2 sp of next shell) 3 times. Shell in next corner ch-2 sp - corner shell made. Shell in ch-2 sp of next shell. (Ch 2. Miss next ch-2 sp. Shell in ch-2 sp of next shell) 3 times. Ch 2. Miss next ch-2 sp.** Shell in ch-2 sp of next shell. Rep from * around, ending at **. Join with sl st to top of ch 3.

18th rnd: Sl st in each of next 2 dc and ch-2 sp. Beg shell in same sp as last sl st. *(Ch 2. Miss next ch-2 sp. Shell in ch-2 sp of next shell) 3 times. (Ch 2. 3 dc) 3 times in ch-2 sp of next corner shell - corner three 3-dc groups and two ch-2 sps made. (Ch 2. Shell in ch-2 sp of next shell. Miss next ch-2 sp) 4 times. Ch 2.** Shell in ch-2 sp of next shell. Rep from * around, ending at **. Join with sl st to top of ch 3.

Rep 16th to 18th rnds for pat **0 (1-2-3-4)** time(s) more, noting that 2 more reps of shells will be worked between corner sts after each pat rep. Fasten off at end of last rep.

Shape armholes: 1st row: Join yarn with sl st in ch-2 sp of **3rd (4th-6th-7th-8th)** shell before next corner ch-2 sp. Beg shell in same sp as last sl st. *(Ch 2. Miss next ch-2 sp. Shell in ch-2 sp of next shell) **2 (3-5-6-7)** times. Ch 2. Miss next ch-2 sp. (Shell in next ch-2 sp. Ch 2) twice - corner 2 shells and ch-2 sp made.** Miss next ch-2 sp. (Shell in ch-2 sp of next shell. Ch 2. Miss next ch-2 sp) **5 (6-6-7-8)** times. Shell in next ch-2 sp of next shell. Rep from * to **.

Miss next ch-2 sp. (Shell in ch-2 sp of next shell. Ch 2. Miss next ch-2 sp) **2 (3-5-6-8)** times. Shell in ch-2 sp of next shell. **Turn.** Leave rem sts unworked.

2nd row: Sl st in each of first 3 dc and ch-2 sp. Beg shell in same sp as last sl st. *(Ch 2. Miss next ch-2 sp. Shell in ch-2 sp of next shell) **3 (4-6-7-8)** times. *Shell in next corner ch-2 sp - corner shell made.*** Shell in ch-2 sp of next shell. (Ch 2. Miss next ch-2 sp. Shell in ch-2 sp of next shell) **5 (6-6-7-9)** times. Ch 2. Shell in next ch-2 sp of next shell. Rep from * to **. Shell in ch-2 sp of next shell. (Ch 2. Miss next ch-2 sp. Shell in ch-2 sp of next shell) **3 (4-6-7-8)** times. Turn.

3rd row: Sl st in each of next 2 dc and ch-2 sp. Beg shell in same sp as last sl st. *(Ch 2. Miss next ch-2 sp. Shell in ch-2 sp of next shell) **3 (4-6-7-8)** times. (Ch 2. 3 dc) 3 times in ch-2 sp of next corner shell - corner three 3-dc groups and two ch-2 sps made.** (Ch 2. Shell in ch-2 sp of next shell. Miss next ch-2 sp) **6 (7-7-8-9)** times. Ch 2. Shell in ch-2 sp of next shell. Rep from * to **. (Ch 2. Miss next ch-2 sp. Shell in ch-2 sp of next shell) **4 (5-7-8-9)** times. Fasten off.

Left and Right Front (make alike, noting 1st row is RS for Left Front and WS for Right Front).

***Ch 4.

1st row: (2 dc. Ch 2. 3 dc) in 4th ch from hook. Turn.

2nd row: Sl st in each of first 3 dc and ch-2 sp. Ch 3. [2 dc. (Ch 2. 3 dc) twice] all in same sp as last sl st. Turn.

3rd row: Sl st in each of first 3 dc and ch-2 sp. Beg shell in same sp as last sl st. Ch 2. Shell in next ch-2 sp. Turn.

4th row: Sl st in each of first 3 dc and ch-2 sp. Beg shell in same sp as last sl st. Shell in next ch-2 sp. Shell in ch-2 sp of last shell. Turn.

5th row: Sl st in each of first 3 dc and ch-2 sp. Beg shell in same sp as last sl st. Ch 2. [(3 dc. Ch 2) twice. 3 dc] all in ch-2 sp of next shell. Ch 2. Shell in ch-2 sp of last shell. Turn.

6th row: Sl st in each of first 3 dc and ch-2 sp. Beg shell in same sp as last sl st. Ch 2. Miss next ch-2 sp. (Shell in next ch-2 sp. Ch 2) twice. Miss next ch-2 sp. Shell in ch-2 sp of last shell. Turn.

7th row: Sl st in each of first 3 dc and ch-2 sp. Beg shell in same sp as last sl st. Ch 2. Miss next ch-2 sp. Shell in ch-2 sp of next shell. Shell in next ch-2 sp corner. Shell in ch-2 sp of next shell. Ch 2. Miss next ch-2 sp. Shell in ch-2 sp of last shell. Turn.

8th row: Sl st in each of first 3 dc and ch-2 sp. Beg shell in same sp as last sl st. Ch 2. Miss next ch-2 sp. Shell in ch-2 sp of next shell. Ch 2. [(3 dc. Ch 2) twice. 3 dc] all in ch-2 sp of next shell. Ch 2. Shell in ch-2 sp of next shell. Ch 2. Miss next ch-2 sp. Shell in ch-2 sp of last shell. Turn.

9th row: Sl st in each of first 3 dc and ch-2 sp. Beg shell in same sp as last

sl st. Ch 2. Miss next ch-2 sp. Shell in ch-2 sp of next shell. Miss next ch-2 sp. (Ch 2. Shell in next ch-2 sp) twice - corner 2 shells and ch-2 sp made. (Ch 2. Miss next ch-2 sp. Shell in ch-2 sp of next shell) twice. Turn.

10th row: Sl st in each of first 3 dc and ch-2 sp. Beg shell in same sp as last sl st. (Ch 2. Miss next ch-2 sp. Shell in ch-2 sp of next shell) twice. *Shell in next corner ch-2 sp - corner shell made.* (Shell in ch-2 sp of next shell. Ch 2. Miss next ch-2 sp) twice. Shell in ch-2 sp of last shell. Turn.

11th row: Sl st in each of first 3 dc and ch-2 sp. Beg shell in same sp as last sl st. (Ch 2. Miss next ch-2 sp. Shell in ch-2 sp of next shell) twice. Ch 2. [(3 dc. Ch 2) twice. 3 dc] all in ch-2 sp of next shell - corner three 3-dc groups and two ch-2 sps made. Ch 2. Shell in ch-2 sp of next shell. (Ch 2. Miss next ch-2 sp. Shell in ch-2 sp of next shell) twice. Turn.

12th row: Sl st in each of first 3 dc and ch-2 sp. Beg shell in same sp as last sl st. (Ch 2. Miss next ch-2 sp. Shell in ch-2 sp of next shell) twice. Miss next ch-2 sp. (Ch 2. Shell in next ch-2 sp) twice - corner 2 shells and ch-2 sp made. (Ch 2. Miss next ch-2 sp. Shell in ch-2 sp of next shell) 3 times. Turn. ***

Rep 10th to 12th rnds for pat **0 (1-2-3-4)** time(s) more, noting that 1 more rep of shells will be worked before and after corner sts after each pat rep.

Proceed as follows:

1st row: (RS). Sl st in each of first 3 dc and ch-2 sp. Beg shell in same sp as last sl st. (Ch 2. Miss next ch-2 sp. Shell in ch-2 sp of next shell) **3 (4-5-6-7)** times. **Turn.** Leave rem sts unworked.

2nd row: Sl st in each of first 3 dc and ch-2 sp. Beg shell in same sp as last sl st. *Ch 2. Miss next ch-2 sp. Shell in ch-2 sp of next shell. Rep from * to end of row. Turn.

Rep last row until work from bottom edge measures same length as Back to beg of armhole, ending at armhole edge.

Shape armhole: 1st row: Sl st in each of first 3 dc and ch-2 sp. Beg shell in same sp as last sl st. *Ch 2. Miss next ch-2 sp. Shell in ch-2 sp of next shell. Rep from * to last **1 (1-1-1-2)** shell(s). **Turn.** Leave last shell(s) unworked.

2nd row: Sl st in each of first 3 dc and ch-2 sp. Beg shell in same sp as last sl st. *Ch 2. Miss next ch-2 sp. Shell in ch-2 sp of next shell. Rep from * to end of row. Turn.

Rep last row until armhole measures 5" [12.5 cm] less than armhole for Back, ending with a WS row.

Shape neck edge: 1st row: Sl st in each of first 3 dc and ch-2 sp. Beg shell in same sp as last sl st. *Ch 2. Miss next ch-2 sp. Shell in ch-2 sp of next shell. Rep from * to last shell. **Turn.** Leave last shell unworked.

2nd row: Sl st in each of first 3 dc and ch-2 sp. Beg shell in same sp as last sl st. *Ch 2. Miss next ch-2 sp. Shell in ch-2 sp of next shell. Rep from * to end of row. Turn.

Rep last row 0 (0-0-0-2) times more. Rep last 2 (2-2-2-4) rows until 2 (2-3-3-4) shells rem, then rep 2nd row only until armhole measures same length as Back, ending with a RS row. Fasten off.

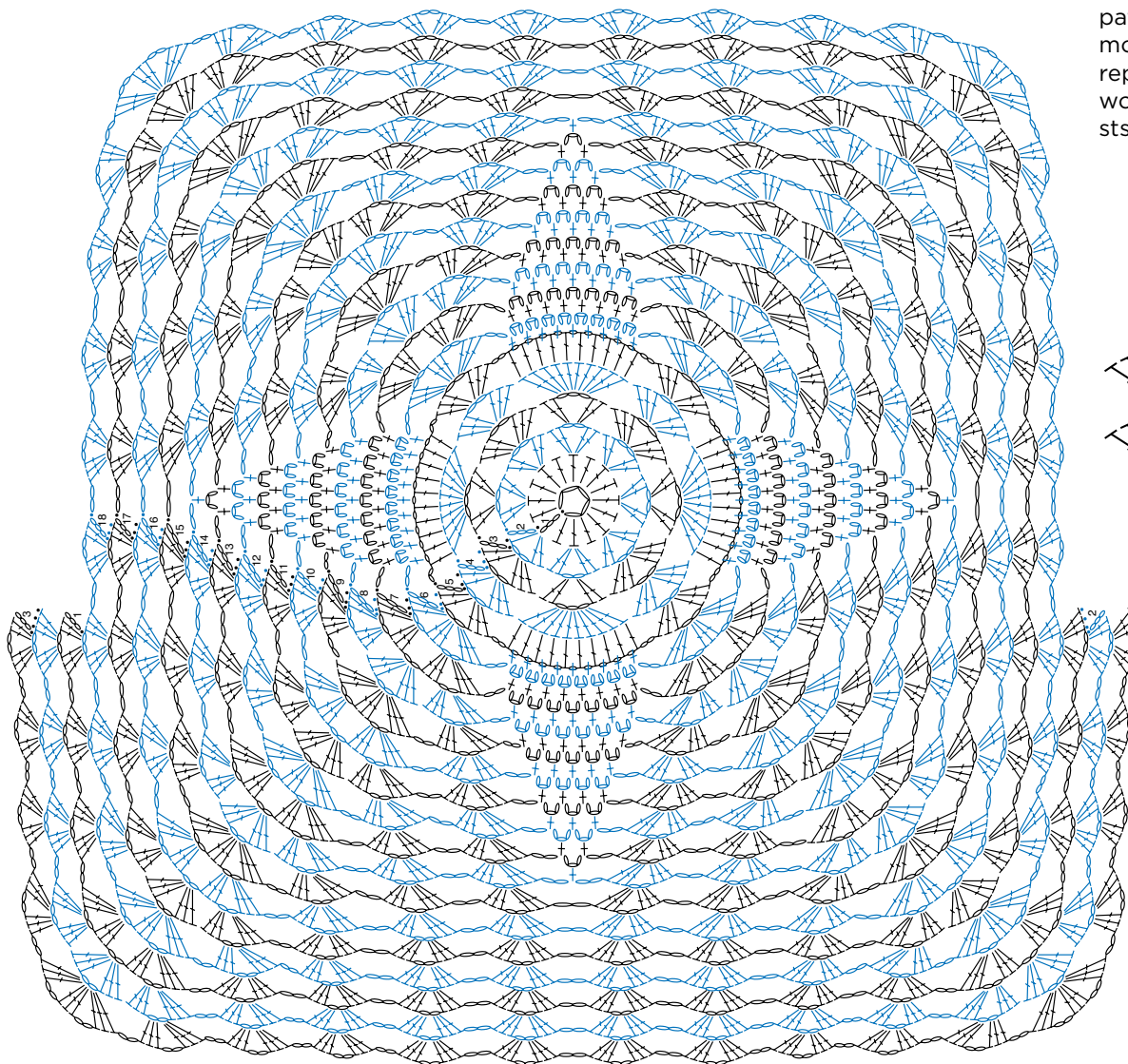
SLEEVES

Work from *** to *** as given for Fronts. Rep 10th to 12th rnds for pat 2 (3-3-4-4) times more, noting that 1 more rep of shells will be worked before and after corner sts after each pat rep.

FINISHING

Sew shoulder seams. Sew in sleeves, matching foundation chain with shoulder seam and leave last row as bottom edge of sleeve. Sew side seams.

Ties: (make 2). Ch 45. Sl st in 2nd ch from hook and each ch to end of chain. Sew ties to first row of V-neck shaping. If desired, attach 1 bead to end of each Tie as shown in photo.



BACK

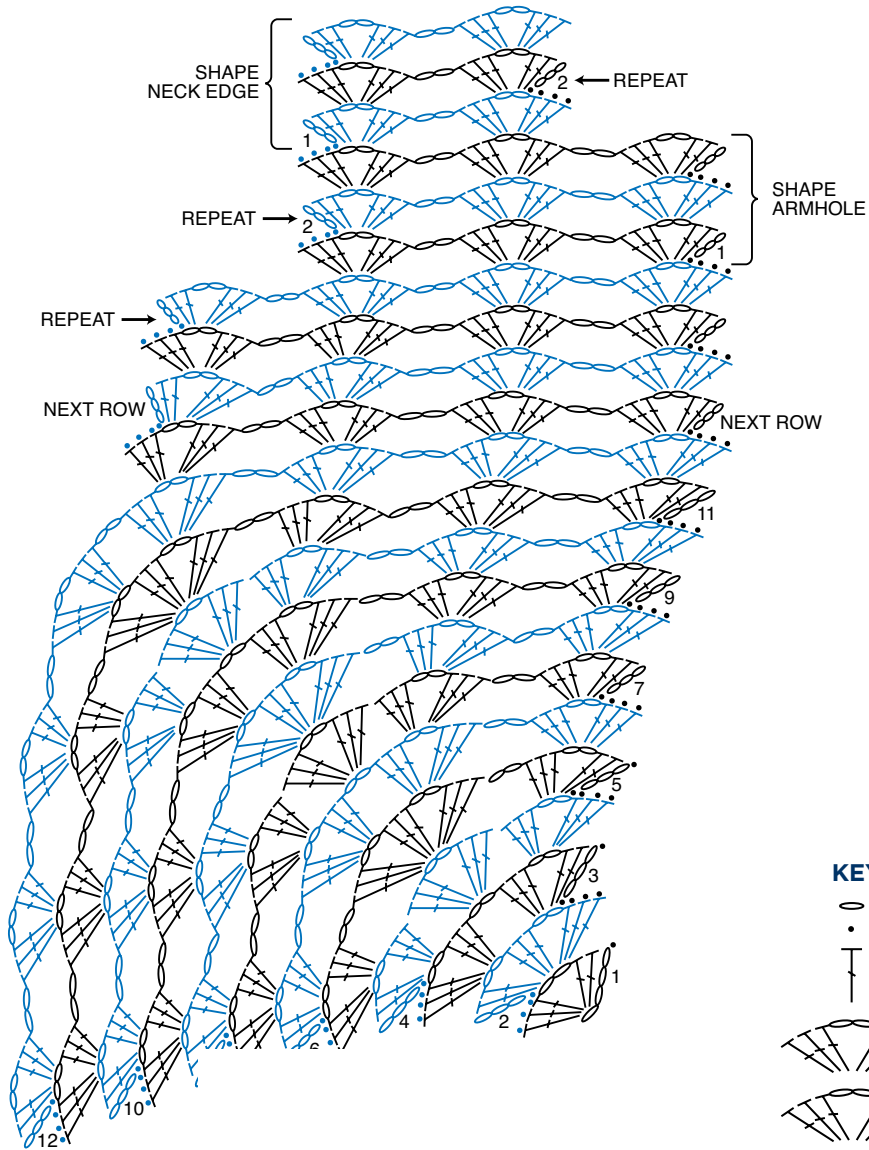
Rep 16th to 18th rnds for pat 0 (1-2-3-4) time(s) more, noting that 2 more reps of shells will be worked between corner sts after each pat rep.

Key

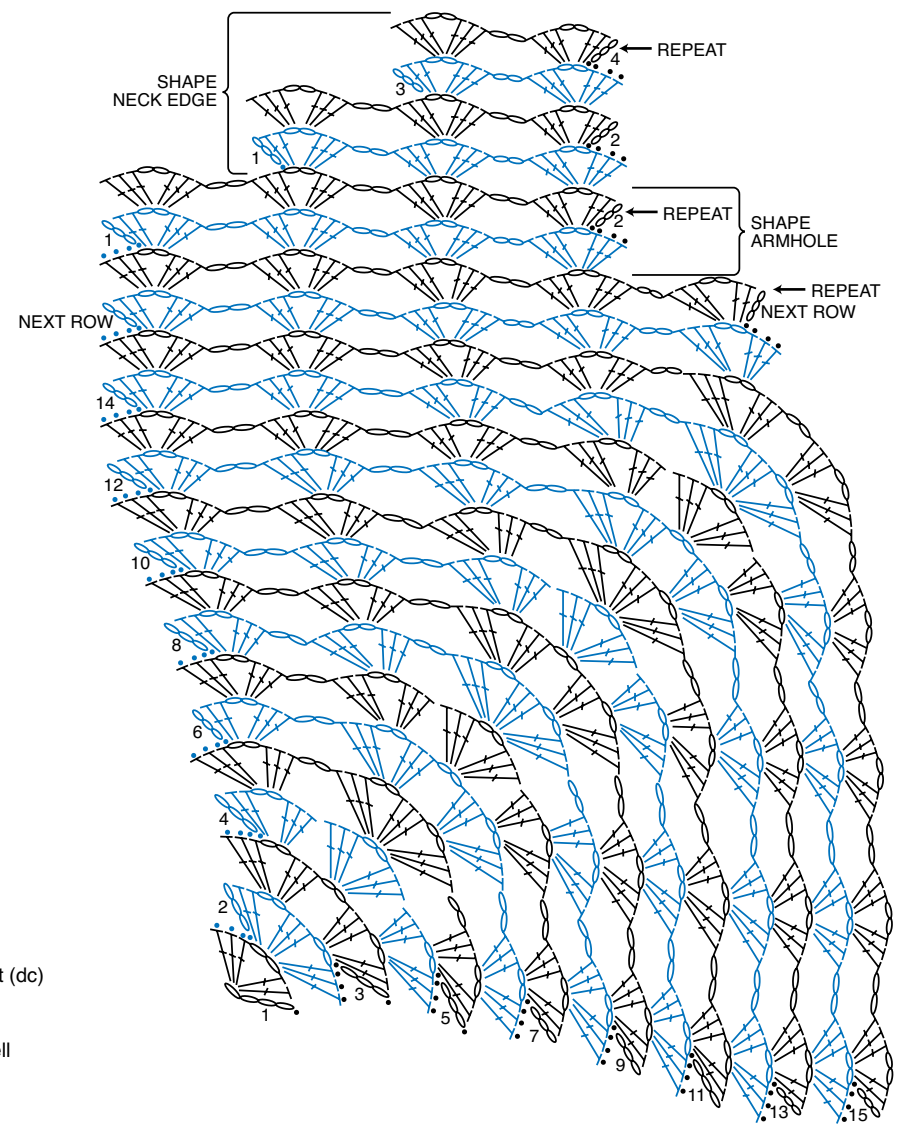
- = chain (ch)
- = slip st (sl st)
- ⌋ = double crochet (dc)



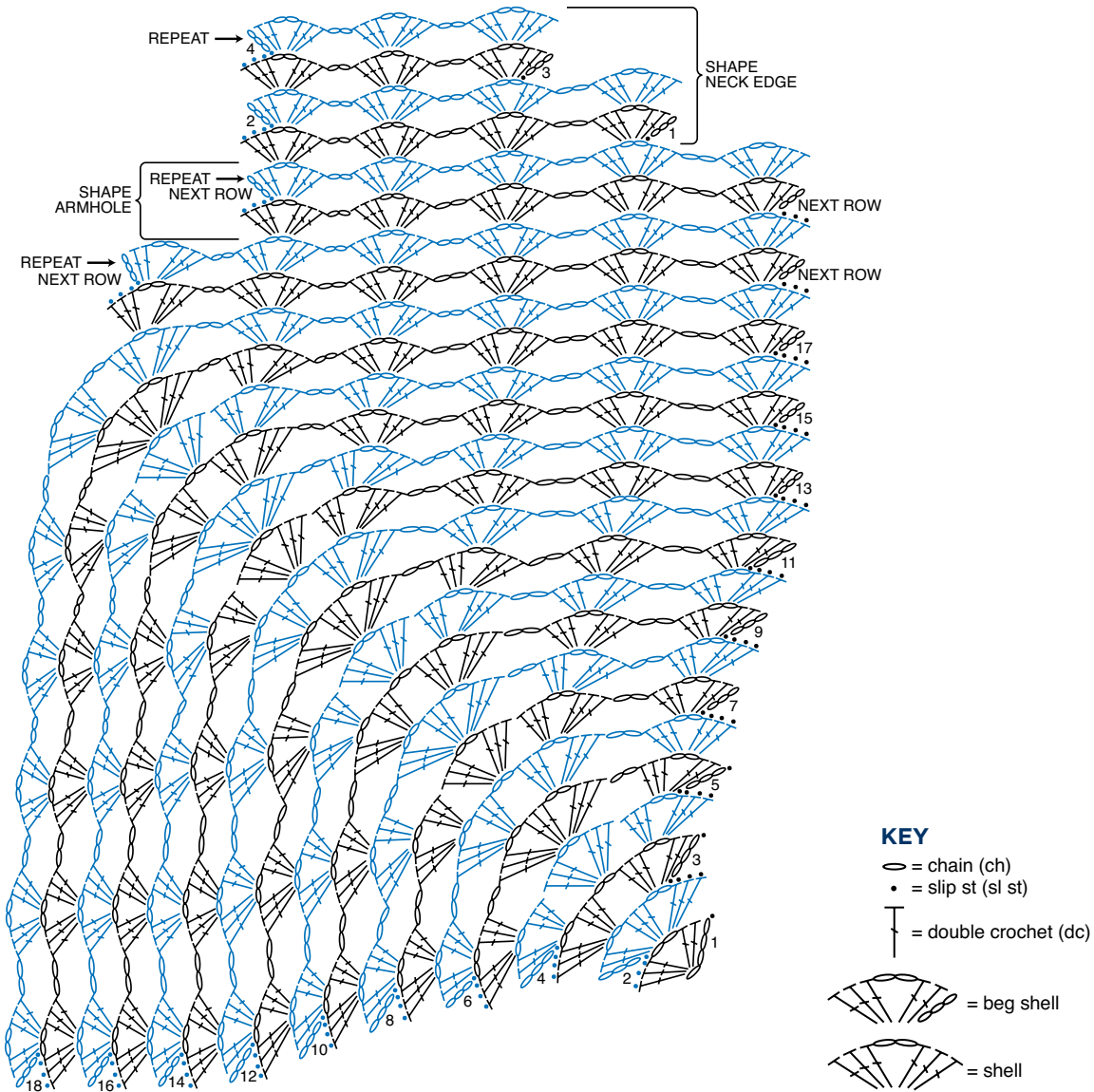
LEFT AND RIGHT FRONT Size XS/S



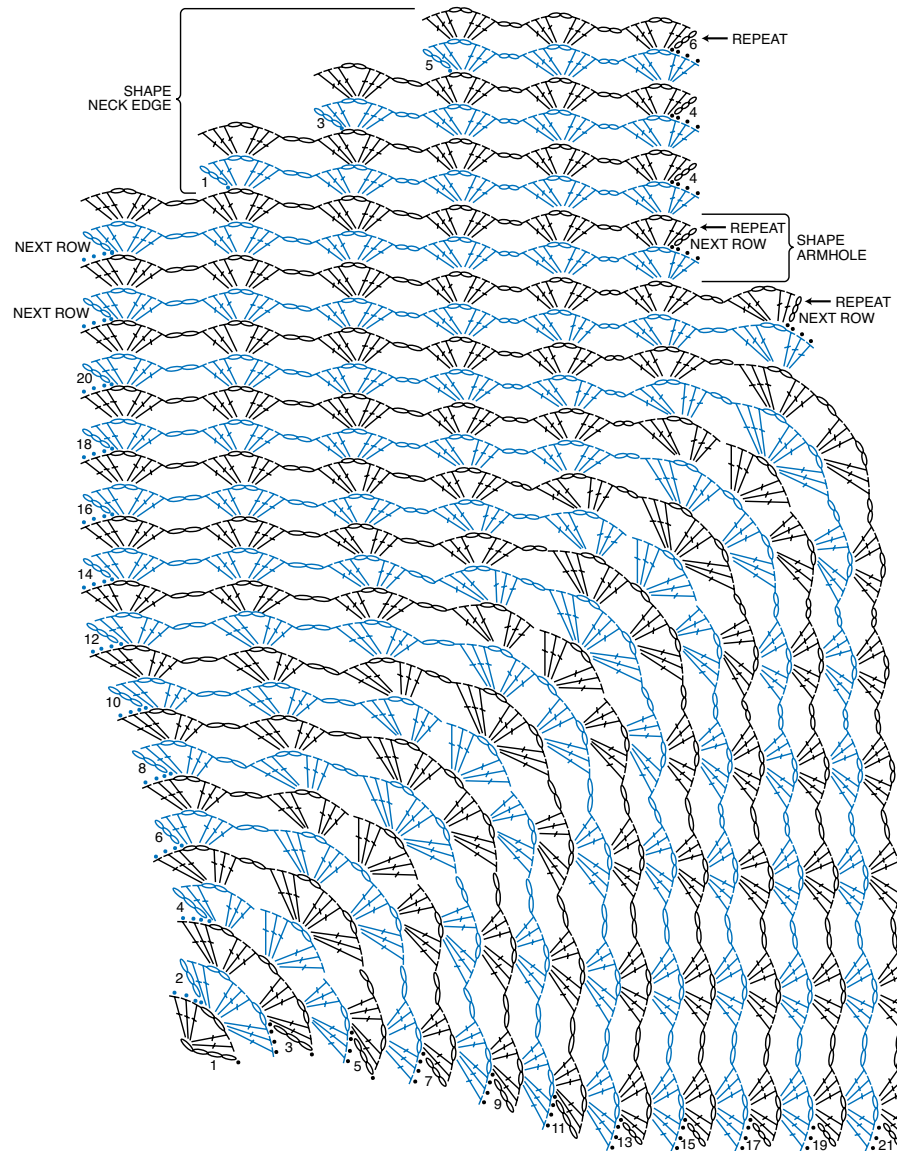
LEFT AND RIGHT FRONT Size M





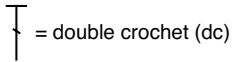
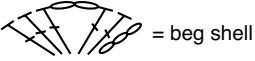

LEFT AND RIGHT FRONT Size L/XL



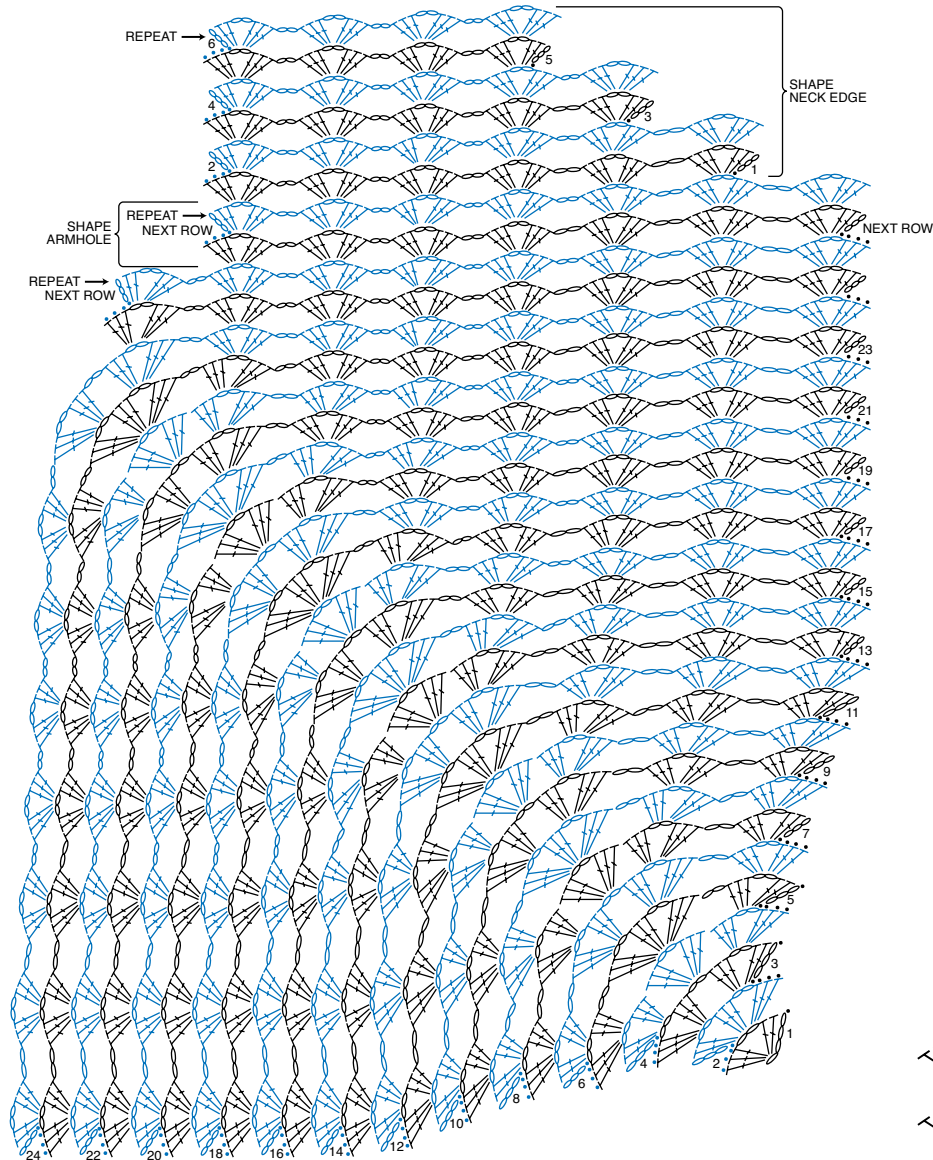
LEFT AND RIGHT FRONT Size 2/3XL



KEY

-  = chain (ch)
-  = slip st (sl st)
-  = double crochet (dc)
-  = beg shell
-  = shell

LEFT AND RIGHT FRONT Size 4/5XL



KEY

- = chain (ch)
- = slip st (sl st)
- ┆ = double crochet (dc)



