



KNIT I SKILL LEVEL: EASY

## ABBREVIATIONS

**Approx** = Approximately

**Beg** = Begin(ning)

**K** = Knit

**K2tog** = Knit next 2 stitches together

**P** = Purl

**Pat** = Pattern

**Rep** = Repeat

**RS** = Right side

**St(s)** = Stitch(es)

**Yo** = Yarn over

## MEASUREMENTS

Approx 40" x 49" [101.5 x 124.5 cm].

## GAUGE

6 sts and 10 rows = 4" [10 cm] in pat.

## INSTRUCTIONS

**Note:** Pat worked over multiple of 3 sts.

Cast on 60 sts. **Do not** join. Working back and forth across needle in rows proceed as follows:

**1st row:** (RS). K2. yo. K2tog. \*K1. yo. K2tog. Rep from \* to last 2 sts. K2.

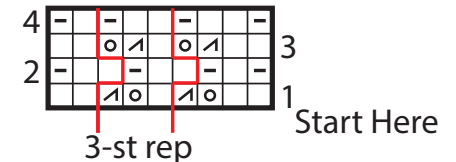
**2nd row:** \*K1. P2. Rep from \* to last 3 sts. K1. P1. K1.

**3rd row:** K2. K2tog. yo. \*K1. K2tog. yo. Rep from \* to last 2 sts. K2.

**4th row:** K1. P1. \*K1. P2. Rep from \* to last st. K1.

Rep last 4 rows until work from beg measures approx 49" [124.5 cm], ending on a 2nd row.

Cast off.



## KEY

[ ] = Knit on RS rows. Purl on WS rows.

[ ] = Knit on WS rows.

[ ] = K2tog

[ ] = yo

## MATERIALS

**Bernat® Velvet Plus™** (10.5 oz/300 g; 78 yds/71 m)

Icy (17013)

**6 balls**

Size U.S. 15 (10 mm) circular knitting needle 29" [73.5 cm] long **or size needed to obtain gauge.**