



INTERMEDIATE

MEASUREMENTS

Approx 61" [155 cm] wide x 12" [30.5 cm] deep.

GAUGE

25 sts and 40 rows = 4" [10 cm] in garter st.



INSTRUCTIONS

Cast on 5 sts.

(See Chart 1 on page 3).

1st row: (RS). K2. Kfb. Knit to end of row.

2nd row: Purl to last 2 sts. K2.

3rd to 10th rows: Rep 1st and 2nd rows 4 times more.

11th row: K2. Kfb. K1. C6B.

12th row: Purl to last 2 sts. K2.

13th row: K2. Kfb. Knit to end of row.

14th row: Purl to last 2 sts. K2.

15th to 18th rows: Rep 13th and 14th rows twice more.

19th row: K2. Kfb. K1. C10B.

20th row: Purl to last 2 sts. K2.

21st row: K2. Kfb. Knit to end of row.

22nd row: Purl to last 2 sts. K2.

23rd and 24th rows: Rep 21st and 22nd rows once more.

25th row: K2. Kfb. yo. K2tog. Knit to end of row.

26th row: P14. K1. P1. K2.

27th row: K2. Kfb. P1. yo. K2tog. C12B.

28th row: P14. K2. P1. K2.

29th row: K2. Kfb. P2. yo. K2tog. K12.

30th row: P14. K3. P1. K2.

31st row: K2. Kfb. P3. yo. K2tog. K12.

32nd row: P14. K3. P2. K2.

33rd row: K2. Kfb. K1. P3. yo. K2tog. K12.

34th row: P14. K3. P3. K2.

35th row: K2. Kfb. PM. ssk. yo. P1. MB. P1. yo. K2tog. C12B.

36th and following alt rows: P14. K3. P2. Knit to end of row.

37th row: Knit to marker. ssk. yo. P3. yo. K2tog. K12.

39th row: Knit to 1 st before marker. Kfb. ssk. yo. P3. yo. K2tog. K12.

41st row: Knit to marker. ssk. yo. P3. yo. K2tog. K12.

43rd row: Knit to 1 st before marker. Kfb. ssk. yo. P1. MB. P1. yo. K2tog. C12B.

45th row: Knit to marker. ssk. yo. P3. yo. K2tog. K12.

47th row: Knit to 1 st before marker. Kfb. ssk. yo. P3. yo. K2tog. K12.

49th row: Knit to marker. ssk. yo. P3. yo. K2tog. K12.

50th row: P14. K3. P2. Knit to end of row. 26 sts.

Rep 43rd to 50th rows to 82 sts on needle, ending on a 50th row.

Cont straight as follows:

1st row: (RS). Knit to marker. ssk. yo. P1. MB. P1. yo. K2tog. C12B.

2nd and alt rows: P14. K3. P2. Knit to end of row.

3rd, 5th and 7th rows: Knit to marker. ssk. yo. P3. yo. K2tog. K12.

MATERIALS

Patons® Lace™ (3 oz/85 g; 498 yds/455 m)

Bonfire (33550)

1 ball

Size U.S. 4 (3.5 mm) knitting needles **or size needed to obtain gauge.** Cable needle. 1 stitch marker.



8th row: P14. K3. P2. Knit to end of row.
Rep last 8 rows until work from beg measures approx 34½" [87.5 cm], ending on an 8th row.

Dec as follows:

1st row: (RS). Knit to 2 sts before marker. (ssk) twice. yo. P1. MB. P1. yo. K2tog. C12B.

2nd and alt rows: P14. K3. P2. Knit to end of row.

3rd row: Knit to marker. ssk. yo. P3. yo. K2tog. K12.

5th row: Knit to 2 sts before marker. (ssk) twice. yo. P3. yo. K2tog. K12.

7th row: Knit to marker. ssk. yo. P3. yo. K2tog. K12.

8th row: P14. K3. P2. Knit to end of row.
Rep last 8 rows until there are 24 sts on needle, ending on a 6th row.

(See Chart 2 on page 3)

1st row: Knit to 2 sts before marker. (Ssk) twice. yo. P3. yo. K2tog. K12.

2nd row: P14. K3. P2. Knit to end of row.

3rd row: Knit to 2 sts before marker. (Ssk) twice. yo. P1. MB. P1. yo. K2tog. C12B.

4th row: P14. K3. P2. K3.

5th row: K2. Remove marker. Ssk. K1. P3. yo. K2tog. Knit to end of row.

6th row: P14. K3. P2. K2.

7th row: K2. Ssk. P3. Yo. K2tog. Knit to end of row.

8th row: P14. K3. P1. K2.

9th row: K2. Ssk. P2. Yo. K2tog. Knit to end of row.

10th row: P14. K2. P1. K2.

11th row: K2. Ssk. P1. yo. K2tog. C12B.

12th row: P14. K1. P1. K2.

13th, 15th and 17th rows: K2. ssk. Knit to end of row row.

14th and following alt rows: Purl to last 2 sts. K2.

19th row: K2. Ssk. K1. C10B.

21st, 23rd, and 25th rows: K2. Ssk. Knit to end of row.

27th row: K2. Ssk. K1. C6B.

29th, 31st, 33rd, 35th and 37th rows:

K2. Ssk. Knit to end of row.

Cast off rem 5 sts.

ABBREVIATIONS: www.yarnspirations.com/abbreviations

Alt = Alternate(ly)

Approx = Approximately

Beg = Beginning

Cont = Continue(ity)

C6B = Slip next 3 stitches onto cable needle and leave at back of work. K3, then K3 from cable needle

C10B = Slip next 5 stitches onto cable needle and leave at back of work. K5, then K5 from cable needle

C12B = Slip next 6 stitches onto cable needle and leave at back of work. K6, then K6 from cable needle

Dec = Decrease

K = Knit

Kfb = Increase 1 stitch by knitting into front and back of next stitch
K2tog = Knit 2 stitches together

MB = Make bobble: (K1. P1. K1) all in next stitch.

Turn. P3. **Turn.** K3. **Turn.** P3. **Turn.** K3tog.

P = Purl

PM = Place marker

Rem = Remaining

Rep = Repeat

RS = Right side

Ssk = Slip next 2 stitches knitwise one at a time. Pass them back onto left-hand needle, then knit through back loops together

St(s) = Stitch(es)

Yo = Yarn over



Key

- = Knit on RS rows, Purl on WS rows
- = Purl on RS rows, Knit on WS rows
- = yo
- = kfb
- = ssk
- = K2tog
- = MB (Make Bobble)
- = C6B
- = C10B
- = C12B

Chart 1

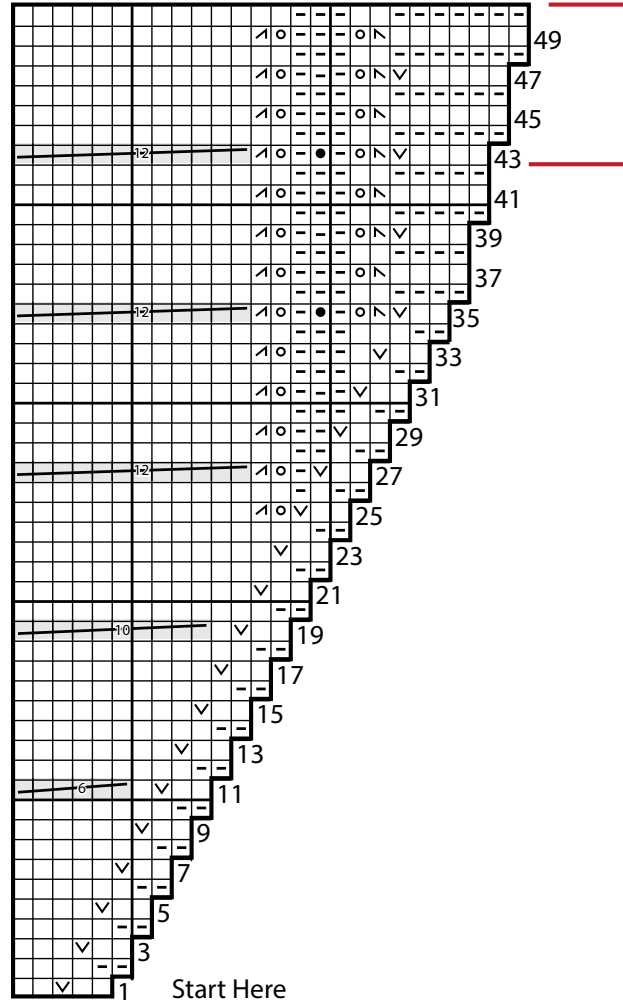


Chart 2

