



 KNIT | SKILL LEVEL: INTERMEDIATE

## ABBREVIATIONS

**Beg** = Begin(ning)

**C4B** = Slip next 2 stitches onto cable needle and leave at back of work. K2, then K2 from cable needle

**C4F** = Slip next 2 stitches onto cable needle and leave at front of work. K2, then K2 from cable needle

**C10B** = Slip next 5 stitches onto cable needle and leave at back of work. K5, then K5 from cable needle

**C10F** = Slip next 5 stitches onto cable needle and leave at front of work. K5, then K5 from cable needle

**Cont** = Continue(ity)

**Dec** = Decrease(ing)

**Inc** = Increase(ing)

**K** = Knit

**P** = Purl

**Pat** = Pattern

**Rem** = Remain(ing)

**Rep** = Repeat

**RS** = Right side

**St(s)** = Stitch(es)

**WS** = Wrong side

## SIZES

### To fit bust measurement

<b>XS/S</b>	<b>28-34" [71-86.5 cm]</b>
<b>M/L</b>	<b>36-42" [91.5-106.5 cm]</b>
<b>XL/2XL</b>	<b>44-50" [112-127 cm]</b>
<b>3/5XL</b>	<b>52-62" [132-157.5 cm]</b>

### Finished bust

<b>XS/S</b>	<b>43" [109 cm]</b>
<b>M/L</b>	<b>47" [119.5 cm]</b>
<b>XL/2XL</b>	<b>55" [139.5 cm]</b>
<b>3/5XL</b>	<b>63" [160 cm]</b>

## MATERIALS

Patons® Classic Wool Worsted™ (3.5 oz/100 g; 210 yds/192 m)

<b>Sizes</b>	<b>XS/S</b>	<b>M/L</b>	<b>XL/2XL</b>	<b>3/5XL</b>	<b>balls</b>
Natural Mix (00229)	<b>9</b>	<b>10</b>	<b>12</b>	<b>13</b>	

Sizes U.S. 7 (4.5 mm) and U.S. 8 (5 mm) knitting needles **or size needed to obtain gauge.** Cable needle. Stitch markers. 2 stitch holders.

## GAUGE

19 sts and 25 rows = 4" [10 cm] in stocking st with larger needles.

## INSTRUCTIONS

The instructions are written for smallest size. If changes are necessary for larger size(s) the instructions will be written thus (.). Numbers for each size are shown in the same color throughout the pattern. When only one number is given in black, it applies to all sizes.

## BODY

**Note:** Body is worked in one piece from lower edge of Back, separated into 2 Fronts at shoulders.

With smaller needles cast on **119 (131-149-169)** sts.

**1st row:** (RS). \*K1. P1. Rep from \* to last st. K1.

**2nd row:** \*P1. K1. Rep from \* to last st. P1.

Rep last 2 rows (K1. P1) ribbing for 2" [5 cm], ending on a 2nd row and inc **15 (15-21-25)** sts evenly across last row. **134 (146-170-194)** sts.

Change to larger needles. See Chart I on page 4.

**1st row:** (RS). P2. **K40 (46-58-70)**. P2. K15. P2. K4. P4. K4. P2. K15. P2. **K40 (46-58-70)**. P2.

**2nd row:** K2. **P40 (46-58-70)**. K2. P15. K2. P4. K4. P4. K2. P15. K2. **P40 (46-58-70)**. K2.

**3rd row:** As 1st row.

**4th row:** K2. (P4. K2) **7 (8-10-12)** times. P15. K2. P4. K4. P4. K2. P15. (K2. P4) **7 (8-10-12)** times. K2.

**5th row:** P2. (C4F. P2) **7 (8-10-12)** times. C10B. K5. P2. C4F. P4. C4B. P2. K5. C10F. (P2. C4B) **7 (8-10-12)** times. P2.

**6th and 8th rows:** As 2nd row.

**7th and 9th rows:** As 1st row.

**10th row:** As 4th row.

**11th row:** P2. (C4F. P2) **7 (8-10-12)** times. K5. C10F. P2. C4F. P4. C4B. P2. C10B. K5. (P2. C4B) **7 (8-10-12)** times. P2.

**12th row:** As 2nd row.

These 12 rows form Cable Pat.

Cont in Cable Pat until work from beg measures approx **27 (27-29-29)" [68.5 (68.5-73.5-73.5)** cm], ending on a 6th or 12th row of Cable Pat. Place a marker at end of last row.

**Divide Back: Next row:** (RS). Pat across **67 (73-85-97)** sts. **Turn.** Leave rem sts on a spare needle.

Cont in pat on these **67 (73-85-97)** sts for Right Front as follows:

**Next row:** (WS). K2. Pat to end of row.

**Next row:** Pat to last 2 sts. K2. Keeping 2 neck edge sts in garter st (knit every row), cont in pat until work from marker measures 1" [2.5 cm], ending on a WS row. Place marker for shoulder at side edge of last row.

Keeping 2 neck edge sts in garter st (knit every row), cont in pat until work from shoulder marker measures approx **21½ (21½-23-23)" [54.5 (54.5-58.5-58.5)** cm], ending on a 6th or 12th row of Cable Pat.

**Place pocket: Next row:** (RS). Pat across **16 (22-28-34)** sts. Slip next 26 sts onto a st holder. Turn and cast on 26 sts purlwise using 2 needle cast-on. Turn back to RS and pat to last 2 sts. K2.

Cont in pat until work from shoulder marker measures approx **25 (25-27-27)" [63.5 (63.5-68.5-68.5)** cm], ending on a 1st or 7th row of Cable Pat.

**Next row:** (WS). Purl, dec **8 (8-10-12)** sts evenly across. **59 (65-75-85)** sts.

Change to smaller needles and work 2" [5 cm] in (K1. P1) ribbing, ending on a WS row. Cast off in ribbing.

**Pocket Lining:** With RS facing and larger needles, knit across 26 sts from st holder, dec 3 sts evenly across. 23 sts.

Beg with a purl row, cont in stocking st until Pocket Lining measures **4½ (4½-5-5)" [11.5 (11.5-12.5-12.5)** cm] ending on a purl row. Cast off.

**Left Front:** With RS facing, rejoin yarn to rem sts and pat to end of row.

**Next row:** (WS). Pat to last 2 sts. K2.

**Next row:** K2. Pat to end of row. Keeping 2 neck edge sts in garter st (knit every row), cont in pat until work from marker measures 1" [2.5 cm], ending on a WS row. Place marker for shoulder at side edge of last row.

Keeping 2 neck edge sts in garter st (knit every row), cont in pat until work from shoulder marker measures approx **21½ (21½-23-23)"** [**54.5 (54.5-58.5-58.5)** cm], ending on a 6th or 12th row of Cable Pat.

**Place pocket: Next row:** (RS). K2. Pat across **23 (23-29-35)** sts. Slip next 26 sts onto a st holder. Turn and cast on 26 sts purlwise using 2 needle cast-on. Turn back to RS and pat to end of row.

Cont in pat until work from shoulder marker measures approx **26 (26-28-28)"** [**66 (66-71-71)** cm], ending on a 1st or 7th row of Cable Pat.

**Next row:** (WS). Purl, dec **8 (8-10-12)** sts evenly across. **59 (65-75-85)** sts.

Change to smaller needles and work 2" [5 cm] in (K1. P1) ribbing, ending on a WS row. Cast off in ribbing.

**Pocket Lining:** Work as for Right Front.

## SLEEVE

With smaller needles, cast on **57 (57-61-65)** sts.

Work 1¼" [3 cm] in (K1. P1) ribbing as given for Body, ending on a 2nd row and inc 14 sts evenly across last row. **71 (71-75-79)** sts.

Change to larger needles. See Chart II on page 4.

**1st row:** (RS). K2 (**2-4-6**). P2. K22. P2. K15. P2. K22. P2. K2 (**2-4-6**).

**2nd row:** P2 (**2-4-6**). K2. P22. K2. P15. K2. P22. K2. P2 (**2-4-6**).

**3rd row:** As 1st row.

**4th row:** P2 (**2-4-6**). K2. (P4. K2) 4 times. P15. (K2. P4) 4 times. K2. P2 (**2-4-6**). **5th row:** K2 (**2-4-6**). P2. (C4F. P2) 4 times. C10B. K5. (P2. C4B) 4 times. P2. K2 (**2-4-6**).

**6th and 8th rows:** As 2nd row.

**7th and 9th rows:** As 1st row.

**10th row:** As 4th row.

**11th row:** K2 (**2-4-6**). P2. (C4F. P2) 4 times. K5. C10F. (P2. C4B) 4 times. P2. K2 (**2-4-6**).

**12th row:** As 2nd row.

These 12 rows form Cable Pat.

Cont in pat, AT SAME TIME, inc 1 st each end of next row and following 4th rows until there are **95 (95-99-103)** sts, taking inc sts

into stocking st on each side.

Cont even in pat until Sleeve from beg measures approx 16½" [42 cm], ending on a 6th or 12th row of Cable Pat.

Cast off in pat.

## FINISHING

Block all pieces to measurements. Cover with a damp cloth leaving cloth to dry.

**Pocket Edging:** With RS facing and smaller needles, pick up and knit 25 sts evenly across cast on edge for Pocket.

Beg on a 2nd row, work 5 rows in (K1. P1) ribbing. Cast off in ribbing.

Sew sides of Pocket Edgings in position on RS. Sew Pocket Linings in position to WS, noting cast off edge of Pocket Lining should line up with top row of ribbing on Fronts.

Fold Body along shoulder markers. Place markers on side edges of Front and Back **8½ (8½-9-9½)"** [**21.5 (21.5-23-24)** cm] down from shoulder marker. Sew in sleeves between markers. Sew side and sleeve seams.



BACK VIEW

Chart I

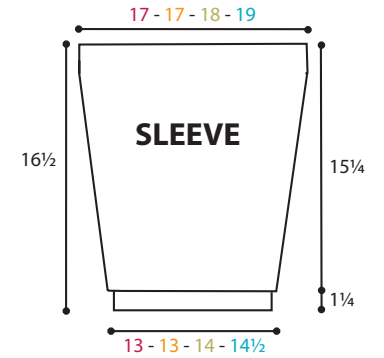
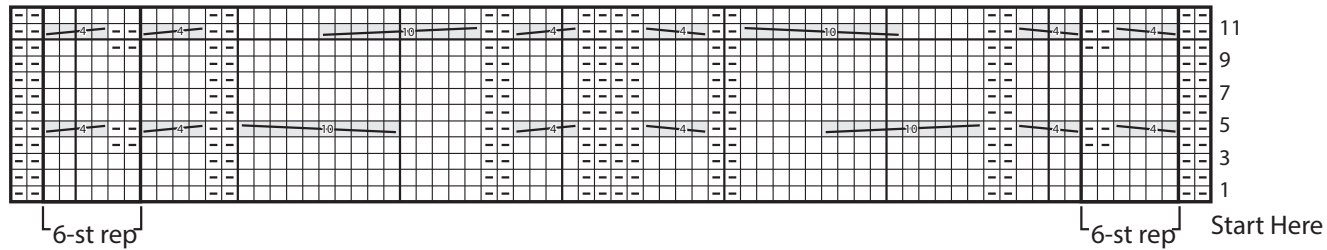
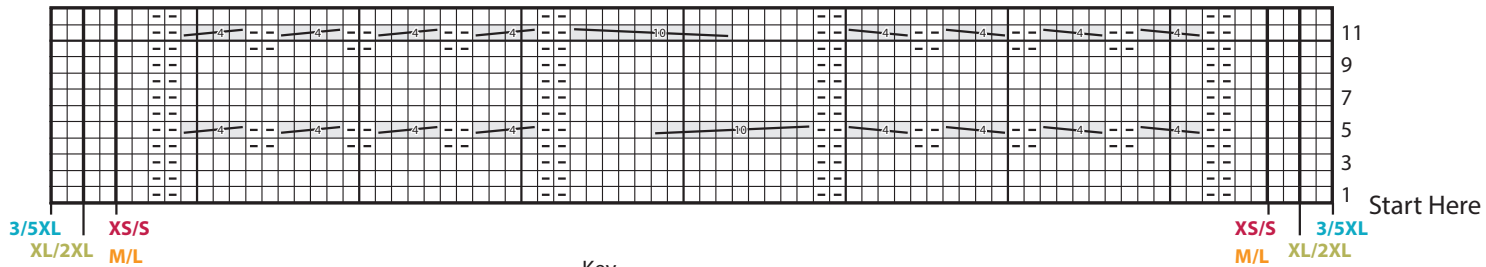


Chart II



Key

- = Knit on RS rows. Purl on WS rows
- = Purl on RS rows. Knit on WS rows
- = C4B
- = C4F
- = C10B
- = C10F

