

Patons®

KROY SOCKS



PATONS® KROY SOCKS CROCHET SHAWL

MEASUREMENTS

Approx 29 x 66 ins [73.5 x 167.5 cm] (excluding edging)

MATERIALS

Patons® Kroy Socks (50 g/1.75 oz; 152 m/166 yds)
(55008 Muslin) **7 balls**

Size 4 mm (U.S. G or 6) crochet hook **or size needed to obtain tension.**

TENSION

19 sc and 21 rows = 4 ins [10 cm].

INSTRUCTIONS

Ch 142 loosely.

1st row: (WS). 1 sc in 2nd ch from hook. 1 sc in next ch. *(Ch 3. Miss next 3 ch. 1 sc in next ch) twice. 1 sc in each of next 2 ch. Rep from * to last 9 ch. (Ch 3. Miss next 3 ch. 1 sc in next ch) twice. 1 sc in last ch. Turn.

2nd row: Ch 8 (counts as 1 tr and ch 4). (1 sc. Ch 7. 1 sc) in first sc. *Ch 5. Miss next sc. 1 dc in next sc. Ch 5. Miss next sc. [(1 sc. Ch 7) 3 times. 1 sc] all in next sc. Rep from * across, ending with (1 sc. Ch 7. 1 sc. Ch 4. 1 tr) all in last sc. Turn.

3rd row: Ch 1. 1 sc in first tr. Ch 3. 1 sc in next ch-7 loop. *Ch 1. 1 sc in next dc. Ch 1. (1 sc in next ch-7 loop. Ch 3) twice. 1 sc in next ch-7 loop. Rep from * across, ending with 1 sc in last dc. Ch 1. 1 sc in next ch-7 loop. Ch 3. 1 sc in 4th ch of ch 8. Turn.

4th row: Ch 8 (counts as dc and ch 5). *Miss next sc. [(1 sc. Ch 7) 3 times. 1 sc] all in next sc. Ch 5. Miss next sc. 1 dc in next sc. Ch 5. Rep from * across, ending with ch 5. Miss next sc. 1 dc in last sc. Turn.

5th row: Ch 1. 1 sc in first dc. *Ch 1. (1 sc in next ch-7 loop. Ch 3) twice. 1 sc in next ch-7 loop. Ch 1. 1 sc in next dc. Rep from * across, ending with 1 sc in 3rd ch of ch 8. Turn.

Rep 2nd to 5th rows for pat until Shawl measures approx 66 ins [167.5 cm], ending with a 5th row of pat.

Final row: (RS). Ch 1. 1 sc in first sc. 1 sc in next sc. *(Ch 3. 1 sc in next sc) twice. 1 sc in each of next 2 sc. Rep from * across, ending with 1 sc in last sc. Turn.

Edging: 1st row: Ch 1. 1 sc in first sc. Miss next sc. *(3 sc in next ch-3 sp. 1 sc in next sc) twice. 1 sc in each of next 2 sc. Rep from * across to last 2 ch-3 sps. (3 sc in next ch-3 sp. Miss next sc) twice. 1 sc in next sc. 2 sc in last sc. 140 sc. Turn.

2nd row: Ch 1. 1 sc in first sc. *Ch 10. (1 dc. Ch 3. Sl st) in 4th ch from hook. Ch 1. Miss next ch. 1 sc in next ch. 1 hdc in next ch. 1 dc in each of next 2 ch. 1 tr in next ch. Miss next 3 sc. Sl st in next sc. Rep from * across, ending with 1 sc in last sc. Fasten off.

Opposite Edging: 1st row: (WS). Join yarn with sl st to rem loop of foundation row at corner. Ch 1. 1 sc in first sc. Miss next sc. *(3 sc in next ch-3 sp. 1 sc in next sc) twice. 1 sc in each of next 2 sc. Rep from * to last 2 ch-3 sps. (3 sc in next ch-3 sp. Miss next sc) twice. 1 sc in next sc. 2 sc in last sc. 140 sc. Turn.

2nd row: Ch 1. 1 sc in first sc. *Ch 10. (1 dc. Ch 3. Sl st) in 4th ch from hook. Ch 1. Miss next ch. 1 sc in next ch. 1 hdc in next ch. 1 dc in each of next 2 ch. 1 tr in next ch. Miss next 3 sc. Sl st in next sc. Rep from * across, ending with 1 sc in last sc. Fasten off.

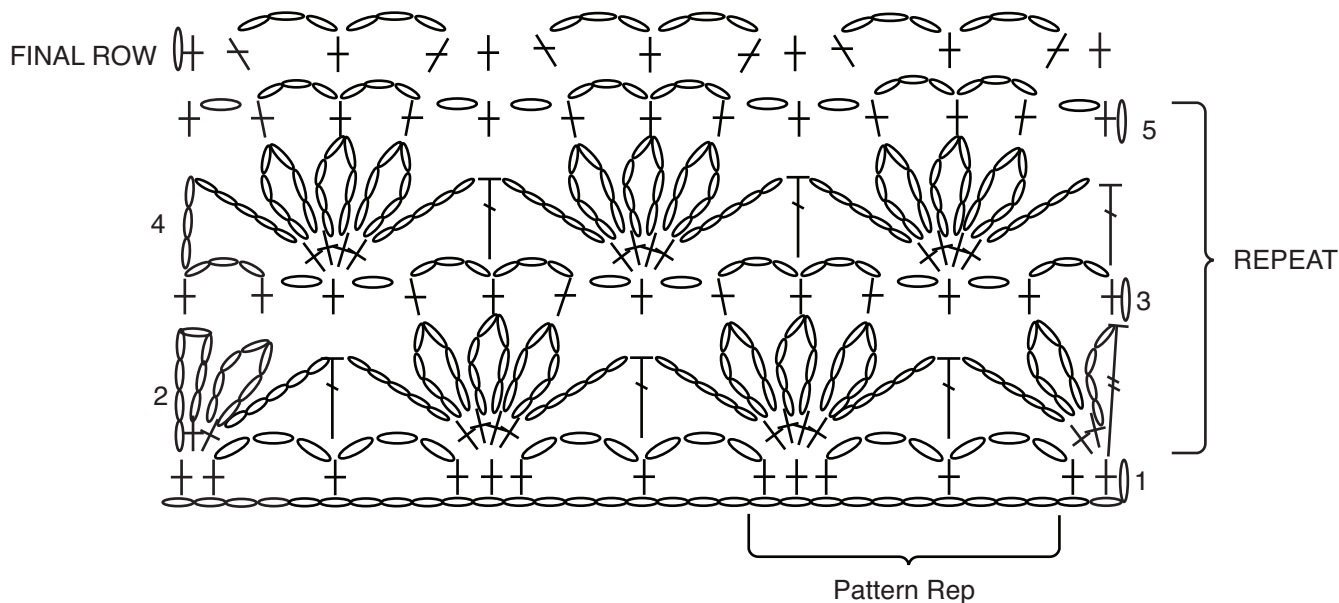
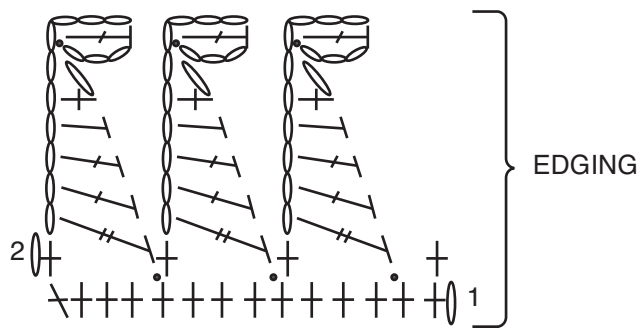


ABBREVIATIONS: www.patonsyarns.com/abbreviations

Patons®

... a part of your life.

P.O. Box 40, Listowel ON N4W 3H3



Key

- = slip stitch (sl st)
- = chain (ch)
- ⊥ = single crochet (sc)
- ┘ = half double crochet (hdc)
- ┘ = double crochet (dc)
- ┘ = treble crochet (tr)

Patons

... a part of your life.

P.O. Box 40, Listowel ON N4W 3H3