



CROCHET | SKILL LEVEL: INTERMEDIATE

ABBREVIATIONS

Approx = Approximately

Beg = Begin(ning)

Ch = Chain(s)

Cont = Continue(ity)

Hdc = Half double crochet

Hdcbp = Yoh and draw up a loop around post of next stitch at back of work, inserting hook from right to left. Yoh and draw through 3 loops on hook.

Hdcfp = Yoh and draw up a loop around post of next stitch at front of work, inserting hook from right to left. Yoh and draw through 3 loops on hook.

Hdcbp2tog = (Yoh and draw up a loop around post of next stitch at back of work, inserting hook from right to left) twice. Yoh and draw through all loops on hook.

Hdcfp2tog = (Yoh and draw up a loop around post of next stitch at front of work, inserting hook from right to left) twice. Yoh and draw through all loops on hook.

Hdc5tog = (Yoh and draw up a loop) in each of next 5 stitches. Yoh and draw through all loops on hook.

Popcorn = Work 4 hdc into next stitch. Drop loop from hook. Insert hook from front to back into first hdc of 4 hdc group. Pull dropped loop through st. Ch 1 to secure popcorn.

PM = Place marker

Rep = Repeat

Rnd(s) = Round(s)

Sc = Single crochet

Sl st = Slip stitch

Sp(s) = Space(s)

St(s) = Stitch(es)

Tr = Treble crochet

Trfp = (Yoh) twice and draw up a loop around post of next stitch at front of work, inserting hook from right to left. (Yoh and draw through 2 loops on hook) 3 times.

WS = Wrong side

Yoh = Yarn over hook

MATERIALS

Lily® Sugar'n Cream® (2.5 oz/70.9 g; 120 yds/109 m)

Stonewash (01118)

5 balls or 600 yds/545 m

Size U.S. H/8 (5 mm) crochet hook **or size needed to obtain gauge.**
Locking stitch markers. Yarn needle.

MEASUREMENTS

Approx 14" [35.5 cm] wide x 4" [10 cm] deep x 17" [43 cm] tall.

GAUGE

13 sc and 14 rows = 4" [10 cm].



INSTRUCTIONS

BOTTOM

Ch 15.

1st row: 1 sc in 2nd ch from hook. 1 sc in each ch to end of chain. Turn. 14 sc.

2nd row: Ch 1. 1 sc in each sc to end of row. Turn.

Rep 2nd row until work from beg measures 14" [35.5 cm]. PM on 7th st of last row. Fasten off.

SIDES

Notes: Join all rnds with sl st to first st.

Turn at end of each rnd to alternate working around RS and WS.

With **WS** facing, join yarn with sl st to marked stitch. Remove marker. See diagram on page 5.

1st rnd: (WS). Ch 1. 1 sc in same st as sl st. 1 sc in each of next 6 sc. Work 49 sts along long edge of Bottom. Work 14 sts along short end of Bottom. Cont down long edge, working (19 sc. 5 hdc in each of next 2 sps. 7 sc. 5 hdc in each of next 2 sps. 19 sc) evenly along Bottom. 1 sc in each of next 7 sc. 142 sts. Join. **Turn.**

2nd rnd: (RS). Ch 1. 1 sc in each of first 16 sc. 1 hdcbp around each of next 3 sts. 1 hdcfp around next st. PM on post of st just worked. 1 hdcbp around each of next 6 sts. Hdcfp2tog. 1 hdcfp around each of next 6 sts. Hdcfp2tog. 1 hdcbp around each of next 3 sts. 1 hdcfp around next st. 1 hdcbp around each of next 3 sts. Hdcfp2tog. 1 hdcfp around each of next 6 sts. Hdcfp2tog. 1 hdcbp around each of next 6 sts. 1 hdcfp around next st. PM on post of st just worked. 1 hdcbp around each of next 3 sts. 1 sc in each sc to end of rnd. Join. **Turn.**

3rd rnd: Ch 1. 1 sc in each of first 79 sc. 1 hdcfp around each of next 3 hdc. 1 hdcbp around next hdc. 1 hdcfp around each of next 6 hdc. Hdcbp2tog. 1 hdcbp around each of next 4 hdc. Hdcbp2tog. 1 hdcfp around each of next 3 hdc. 1 hdcbp around next hdc. 1 hdcfp around each of next 3 hdc. Hdcbp2tog. 1 hdcbp around each of next 4 hdc. Hdcbp2tog. 1 hdcfp around each of next 6 hdc. 1 hdcbp around next hdc. 1 hdcfp around each of next 3 hdc. 1 sc in each sc to end of rnd. Join. **Turn.**

4th rnd: Ch 1. 1 sc in each of first 16 sc. 1 hdcbp around next hdc. 1 trfp around marked hdc 2 rows below. Skip next hdc. *1 hdcbp around next hdc. 1 hdcfp around next hdc. 1 hdcbp around next hdc. 1 trfp around marked hdc 2 rows below. Remove marker.* 1 hdcbp around each of next 4 hdc. Hdcfp2tog. 1 hdcfp around each of next 2 hdc. Hdcfp2tog. 1 hdcbp around each of next 3 hdc. 1 hdcfp around next hdc. 1 hdcbp around each of next 3 hdc. Hdcfp2tog. 1 hdcfp around each of next 2 hdc. Hdcfp2tog. 1 hdcbp around each of next 4 hdc. 1 trfp around marked hdc 2 rows below. Remove marker. Skip next hdc. Rep from * to * once more. Skip next hdc. 1 hdcbp around next hdc. 1 sc in each sc to end of rnd. Join. **Turn.**

5th rnd: Ch 1. 1 sc in each of first 79 sc. 1 hdcfp around next hdc. Popcorn in next tr. 1 hdcfp around next hdc. 1 hdcbp around next hdc. 1 hdcfp around next hdc. Popcorn in next tr. 1 hdcfp around each of next 4 hdc. Hdcbp2tog twice. 1 hdcfp around each of next 3 hdc. 1 hdcbp around next hdc. 1 hdcfp around each of next 3 hdc. Hdcbp2tog twice. 1 hdcfp around

each of next 4 hdc. Popcorn in next hdc. 1 hdcfp round next hdc. 1 hdcbp around next hdc. 1 hdcfp around next hdc. Popcorn in next hdc. 1 hdcfp around next hdc. 1 sc in each sc to end of rnd. Join. **Turn.**

6th rnd: Ch 1. 1 sc in each of first 16 sc. 1 hdcbp around each of next 3 sts. 1 hdcfp around next st. PM on post of st just worked. 1 hdcbp around each of next 6 sts. Hdcfp2tog. 1 hdcbp around each of next 3 hdc. (1 hdcfp. Ch 1. 1 hdcfp) all around next hdc. 1 hdcbp around each of next 3 hdc. Hdcfp2tog. 1 hdcbp around each of next 6 sts. 1 hdcfp around next st. PM on post of st just worked. 1 hdcbp around each of next 3 sts. 1 sc in each sc to end of rnd. Join. **Turn.**

7th rnd: Ch 1. 1 sc in each of first 79 sc. 1 hdcfp around each of next 3 hdc. 1 hdcbp around next hdc. 1 hdcfp around each of next 6 hdc. 1 hdcbp around next hdc. 1 hdcfp around each of next 3 hdc. 1 hdcbp around next hdc. (1 hdc. Ch 1. 1 hdc) all in next ch-1 sp. 1 hdcbp around next hdc. 1 hdcfp around each of next 3 hdc. 1 hdcbp around next hdc. 1 hdcfp around each of next 6 hdc. 1 hdcbp around next



hdc. 1 hdcfp around each of next 3 hdc. 1 sc in each sc to end of rnd. Join. **Turn.**

8th rnd: Ch 1. 1 sc in each of first 16 sc. 1 hdcbp around next hdc. *1 trfp around marked hdc 2 rows below. Remove marker. Skip next hdc. 1 hdcbp around next hdc. 1 hdcfp around next hdc. 1 hdcbp around next hdc. 1 trfp around marked hdc 2 rows below. Remove marker.* 1 hdcbp around each of next 4 hdc. 1 hdcfp around next hdc. 1 hdcbp around each of next 3 hdc. 1 hdcfp around each of next 2 hdc. (1 hdc. Ch 1. 1 hdc) all in next ch-1 sp. 1 hdcfp around each of next 2 hdc. 1 hdcbp around each of next 3 hdc. 1 hdcfp around next hdc. 1 hdcbp around each of next 4 hdc. Rep from * to * once more. Skip next hdc. 1 hdcbp around next hdc. 1 sc in each sc to end of rnd. Join. **Turn.**

9th rnd: Ch 1. 1 sc in each of first 79 sc. 1 hdcfp around next hdc. Popcorn in next tr. 1 hdcfp around next hdc. 1 hdcbp around next hdc. 1 hdcfp around next hdc. Popcorn in next tr. 1 hdcfp around each of next 4 hdc. 1 hdcbp around next hdc. 1 hdcfp around each of next 3 hdc. 1 hdcbp around each of next

3 hdc. (1 hdc. Ch 1. 1 hdc) all in next ch-1 sp. 1 hdcbp around each of next 3 hdc. 1 hdcfp around each of next 3 hdc. 1 hdcbp around next hdc. 1 hdcfp around each of next 4 hdc. Popcorn in next hdc. 1 hdcfp around next hdc. 1 hdcbp around next hdc. 1 hdcfp around next hdc. Popcorn in next hdc. 1 hdcfp around next hdc. 1 sc in each sc to end of rnd. Join. **Turn.**

10th rnd: Ch 1. 1 sc in each of first 16 sc. 1 hdcbp around each of next 3 sts. 1 hdcfp around next st. PM on post of st just worked. 1 hdcbp around each of next 6 sts. 1 hdcfp around next hdc. 1 hdcbp around each of next 3 hdc. 1 hdcfp around each of next 4 hdc. (1 hdc. Ch 1. 1 hdc) all in next ch-1 sp. 1 hdcfp around each of next 4 hdc. 1 hdcbp around each of next 3 hdc. 1 hdcfp around next hdc. 1 hdcbp around each of next 6 sts. 1 hdcfp around next st. PM on post of st just worked. 1 hdcbp around each of next 3 sts. 1 sc in each sc to end of rnd. Join. **Turn.**

11th rnd: Ch 1. 1 sc in each of first 79 sc. 1 hdcfp around each of next 3 hdc. 1 hdcbp around next hdc. 1 hdcfp around each of next 6 hdc. 1 hdcbp around next hdc. 1 hdcfp

around each of next 3 hdc. 1 hdcbp around each of next 5 hdc. Skip next ch-1. 1 hdcbp around each of next 5 hdc. 1 hdcfp around each of next 3 hdc. 1 hdcbp around next hdc. 1 hdcfp around each of next 6 hdc. 1 hdcbp around next hdc. 1 hdcfp around each of next 3 hdc. 1 sc in each sc to end of rnd. Join. **Turn.**

12th rnd: Ch 1. 1 sc in each of first 16 sc. 1 hdcbp around next hdc. *1 trfp around marked hdc 2 rows below. Remove marker. Skip next hdc. 1 hdcbp around next hdc. 1 hdcfp around next hdc. 1 hdcbp around next hdc. 1 trfp around marked hdc 2 rows below. Remove marker.* 1 hdcbp around each of next 4 hdc. 1 hdcfp around next hdc. 1 hdcbp around each of next 3 hdc. Hdcbp2tog. 1 hdcfp around each of next 6 hdc. Hdcbp2tog. 1 hdcbp around each of next 3 hdc. 1 hdcfp around next hdc. 1 hdcbp around each of next 4 hdc. Rep from * to * once. Skip next hdc. 1 hdcbp around next hdc. 1 sc in each sc to end of rnd. Join. **Turn.**

13th rnd: Ch 1. 1 sc in each of first 79 sc. 1 hdcfp around next hdc. Popcorn in next tr. 1 hdcfp around next hdc. 1 hdcbp around next hdc.

1 hdcfp around next hdc. Popcorn in next tr. 1 hdcfp around each of next 4 hdc. 1 hdcbp around next hdc. 1 hdcfp around each of next 3 hdc. Hdcbp2tog. 1 hdcbp around each of next 4 hdc. Hdcbp2tog. 1 hdcfp around each of next 3 hdc. 1 hdcbp around next hdc. 1 hdcfp around each of next 4 hdc. Popcorn in next hdc. 1 hdcfp around next hdc. 1 hdcbp around next hdc. 1 hdcfp around next hdc. Popcorn in next hdc. 1 hdcfp around next hdc. 1 sc in each sc to end of rnd. Join. **Turn.**

14th rnd: Ch 1. 1 sc in each of first 16 sc. 1 hdcbp around each of next 3 sts. 1 hdcfp around next st. PM on post of st just worked. 1 hdcbp around each of next 6 sts. 1 hdcfp around next hdc. 1 hdcbp around each of next 3 hdc. Hdcbp2tog. 1 hdcfp around each of next 2 hdc. Hdcbp2tog. 1 hdcbp around each of next 3 sts. 1 hdcfp around next st. 1 hdcbp around each of next 6 sts. 1 hdcfp around next st. PM on post of st just worked. 1 hdcbp around each of next 3 sts. 1 sc in each sc to end of rnd. Join. **Turn.**

15th rnd: Ch 1. 1 sc in each of first 79 sc. 1 hdcfp around each of next 3 hdc. 1 hdcbp around next



hdc. 1 hdcfp around each of next 6 hdc. 1 hdcbp around next hdc. 1 hdcfp around each of next 3 hdc. Hdcbp2tog twice. 1 hdcfp around each of next 3 hdc. 1 hdcbp around next hdc. 1 hdcfp around each of next 6 hdc. 1 hdcbp around next hdc. 1 hdcfp around each of next 3 hdc. 1 sc in each sc to end of rnd. Join. **Turn.**

16th rnd: Ch 1. 1 sc in each of first 16 sc. 1 hdcbp around next hdc. *1 trfp around marked hdc 2 rows below. Remove marker. Skip next hdc. 1 hdcbp around next hdc. 1 hdcfp around next hdc. 1 hdcbp around next hdc. 1 trfp around marked hdc 2 rows below. Remove marker.* 1 hdcbp around each of next 4 hdc. (1 hdcfp. Ch 1. 1 hdcfp) all around next hdc. 1 hdcbp around each of next 3 hdc. Hdcfp2tog. 1 hdcbp around each of next 3 hdc. (1 hdcfp. Ch 1. 1 hdcfp) all around next hdc. 1 hdcbp around each of next 4 hdc. Rep from * to * once more. Skip next hdc. 1 hdcbp around next hdc. 1 sc in each sc to end of rnd. Join. **Turn.**

17th rnd: Ch 1. 1 sc in each of first 79 sc. 1 hdcfp around next hdc. Popcorn in next tr. 1 hdcfp around next hdc. 1 hdcbp around next hdc.

1 hdcfp around next hdc. Popcorn in next tr. 1 hdcfp around each of next 4 hdc. 1hdcbp around next hdc. (1 hdc. Ch 1. 1 hdc) all in next ch-1 sp. 1hdcbp around next hdc. 1 hdcfp around each of next 3 hdc. 1 hdcbp around next hdc. 1 hdcfp around each of next 3 hdc. 1hdcbp around next hdc. (1 hdc. Ch 1. 1 hdc) all in next ch-1 sp. 1hdcbp around next hdc. 1 hdcfp around each of next 4 hdc. Popcorn in next hdc. 1 hdcfp round next hdc. 1 hdcbp around next hdc. 1 hdcfp around next hdc. Popcorn in next hdc. 1 hdcfp around next hdc. 1 sc in each sc to end of rnd. Join. **Turn.**

18th rnd: Ch 1. 1 sc in each of first 16 sc. 1 hdcbp around each of next 3 sts. 1 hdcfp around next st. PM on post of st just worked. 1 hdcbp around each of next 6 sts. 1 hdcfp around each of next 2 hdc. (1 hdc. Ch 1. 1 hdc) all in next ch-1 sp. 1 hdcfp around each of next 2 hdc. 1 hdcbp around each of next 3 hdc. 1 hdcfp around next hdc. 1 hdcbp around each of next 3 hdc. 1 hdcfp around each of next 2 hdc. (1 hdc. Ch 1. 1 hdc) all in next ch-1 sp. 1 hdcfp around each of next 2 hdc. 1 hdcbp around each of next 6 sts. 1 hdcfp around next st. PM on post

of st just worked. 1 hdcbp around each of next 3 sts. 1 sc in each sc to end of rnd. Join. **Turn.**

19th rnd: Ch 1. 1 sc in each of first 79 sc. 1 hdcfp around each of next 3 hdc. 1 hdcbp around next hdc. 1 hdcfp around each of next 6 hdc. 1 hdcbp around each of next 3 hdc. (1 hdc. Ch 1. 1 hdc) all in next ch-1 sp. 1 hdcbp around each of next 3 hdc. 1 hdcfp around each of next 3 hdc. 1 hdcbp around next hdc. 1 hdcfp around each of next 3 hdc. 1 hdcbp around each of next 3 hdc. (1 hdc. Ch 1. 1 hdc) all in next ch-1 sp. 1 hdcbp around each of next 3 hdc. 1 hdcfp around each of next 3 hdc. 1 hdcbp around next hdc. 1 hdcfp around each of next 3 hdc. 1 sc in each sc to end of rnd. Join. **Turn.**

20th rnd: Ch 1. 1 sc in each of first 16 sc. 1 hdcbp around next hdc. *1 trfp around marked hdc 2 rows below. Remove marker. Skip next hdc. 1 hdcbp around next hdc. 1 hdcfp around next hdc. 1 hdcbp around next hdc. 1 trfp around marked hdc 2 rows below. Remove marker.* 1 hdcbp around each of next 4 hdc. 1 hdcfp around each of next 4 hdc. (1 hdc. Ch 1. 1 hdc) all in next ch-1 sp. 1 hdcfp around

each of next 4 hdc. 1 hdcbp around each of next 3 hdc. 1 hdcfp around next hdc. 1 hdcbp around each of next 3 sts. 1 hdcfp around each of next 4 hdc. (1 hdc. Ch 1. 1 hdc) all in next ch-1 sp. 1 hdcfp around each of next 4 hdc. 1 hdcbp around each of next 4 hdc. Rep from * to * once more. Skip next hdc. 1 hdcbp around next hdc. 1 sc in each sc to end of rnd. Join. **Turn.**

21st rnd: Ch 1. 1 sc in each of first 79 sc. 1 hdcfp around next hdc. Popcorn in next tr. 1 hdcfp around next hdc. 1 hdcbp around next hdc. 1 hdcfp around next hdc. Popcorn in next tr. 1 hdcfp around each of next 4 hdc. 1 hdcbp around each of next 5 hdc. Skip next ch-1 sp. 1 hdcbp around each of next 5 hdc. 1 hdcfp around each of next 3 hdc. 1 hdcbp around next hdc. 1 hdcfp around each of next 3 hdc. 1 hdcbp around next hdc. 1 hdcfp around each of next 5 hdc. Skip next ch-1 sp. 1 hdcbp around each of next 5 hdc. 1 hdcfp around each of next 4 hdc. Popcorn in next hdc. 1 hdcfp around next hdc. 1 hdcbp around next hdc. 1 hdcfp around next hdc. 1 sc in each sc to end of rnd. Join. **Turn.** Rep 2nd to 21st rnds once more.



Next rnd: Ch 1. 1 sc in each of first 26 sts. (Hdc5tog) twice. 1 sc in each of next 7 sts. (Hdc5tog) twice. 1 sc in each sc to end of rnd. 126 sts. Join.

Turn.

Next 8 rnds: Ch 1. 1 sc in each st around. Join. **Turn at end of each rnd.**

Next rnd (handle openings): Ch 1. 1 sc in each of first 22 sc. Ch 19. Skip next 19 sc. 1 sc in each of next 44 sc. Ch 19. Skip next 19 sc. 1 sc in each sc to end of rnd. Join. **Turn.**

Next 9 rnds: Ch 1. 1 sc in each st around. Join. **Turn at end of each rnd.**

Fasten off.

STRAP (worked lengthwise)

Ch 91.

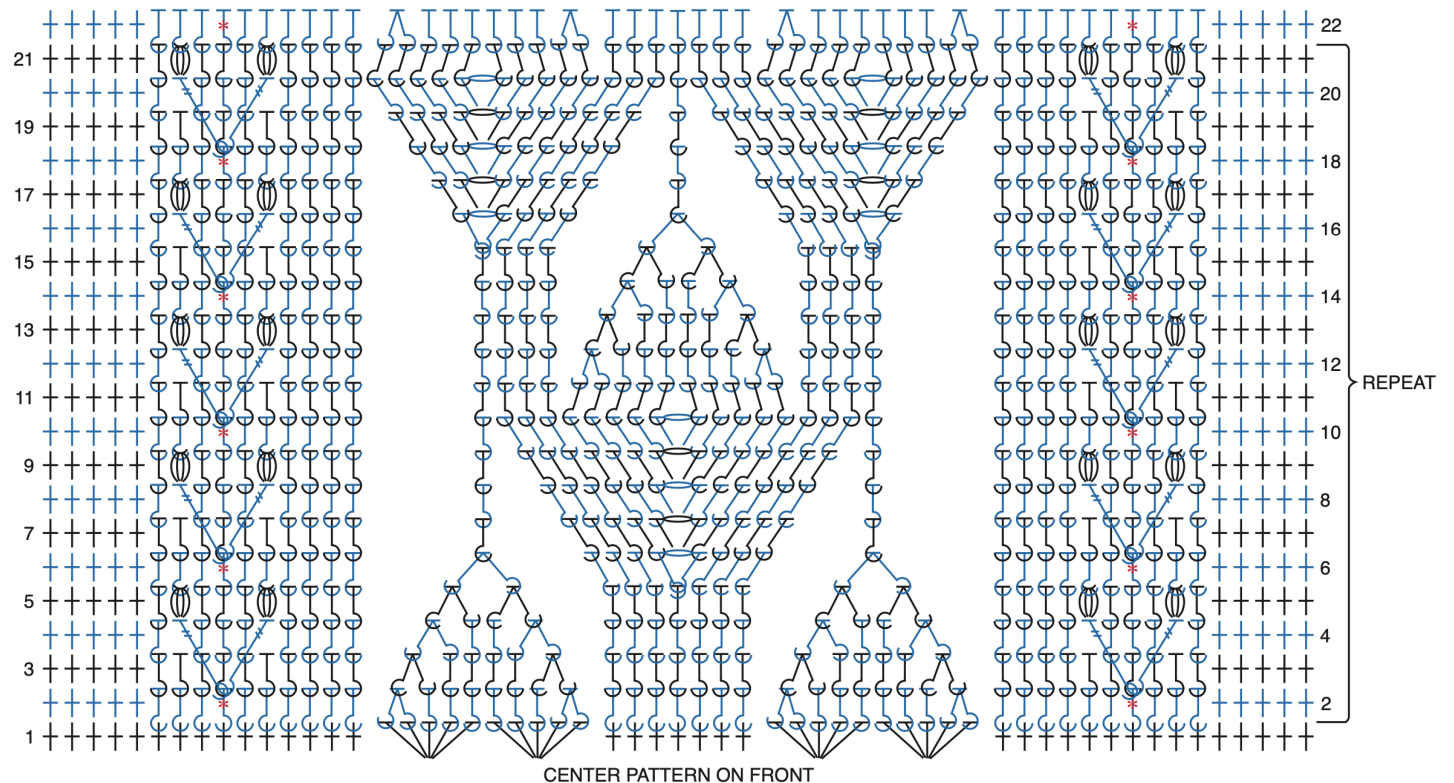
1st row: 1 sc in 2nd ch from hook. 1 sc in each ch to end of chain. Turn. 90 sc.

2nd row: Ch 1. 1 sc in each sc to end of row. Turn.

Rep 2nd row until Strap measures 1½" [4 cm].

Fasten off.

Sew ends of Strap in position as shown in photo.



STITCH KEY

- = chain (ch)
- = single crochet (sc)
- = half double crochet (hdc)
- = front post half double crochet (hdcfp)
- = back post half double crochet (hdcbp)
- = front post treble crochet (trfp)
- = front post half double crochet 2 together (hdcfp2tog)
- = back post half double crochet 2 together (hdcbp2tog)
- = popcorn
- = marker

