



KNIT | SKILL LEVEL: **EXPERIENCED**

## ABBREVIATIONS

**Approx** = Approximate(ly)

**Beg** = Begin(ning)

**Cont** = Continue

**K** = Knit

**Kfb** = Increase 1 stitch by knitting into front and back of next stitch

**K2tog** = Knit next 2 stitches together

**P** = Purl

**P2tog** = Purl next 2 stitches together

**P2togtbl** = Purl next 2 stitches together through back loops

**Pat** = Pattern

**Rep** = Repeat

**Ssk** = Slip next 2 stitches knitwise one at a time. Pass them back onto left-hand needle, then knit through back loops together

**WS** = Wrong side

**Yo** = Yarn over

## MEASUREMENTS

Approx 54" x 60" [137 x 152.5 cm].

## GAUGE

14 sts and 18 rows = 4" [10 cm] in stocking st.

## INSTRUCTIONS

Cast on 180 sts. **Do not** join. Working back and forth across needle in rows, proceed as follows:

### Top Border

**1st row:** (RS). \*K1. P1. Rep from \* to end of row.

**2nd row:** \*P1. K1. Rep from \* to end of row.

Rep last 2 rows of Seed St Pat 3 times more, then rep 1st row once.

**Next row:** (WS). (P1. K1) 6 times. \*P1. Kfb. (P1. K1) 5 times. Rep from \* to end of row. 194 sts.

Proceed in Leaf Pat as follows: (see Chart on page 2)

Multiple of 15 + 14 sts.

**1st row:** (RS). (K1. P1) 3 times. P2. \*K13. P2. Rep from \* to last 6 sts. (K1. P1) 3 times.

## MATERIALS

**Caron® One Pound™** (16 oz/453.6 g; 812 yds/742 m)  
Soft Sage (10580)     **2 balls**

Size U.S. 10½ (6.5 mm) circular knitting needle 36" [91.5 cm] long **or size needed to obtain gauge.**

**2nd row:** (P1. K1) 3 times. K2. \*P13. K2. Rep from \* to last 6 sts. (P1. K1) 3 times.

**3rd row:** (K1. P1) 3 times. P2. \*K10. K2tog. yo. K1. P2. Rep from \* to last 6 sts. (K1. P1) 3 times.

**4th row:** (P1. K1) 3 times. K2. \*yo. P2. P2tog. P9. K2. Rep from \* to last 6 sts. (P1. K1) 3 times.

**5th row:** (K1. P1) 3 times. P2. \*K8. K2tog. K1. yo. K2. P2. Rep from \* to last 6 sts. (K1. P1) 3 times.

**6th row:** (P1. K1) 3 times. K2. \*P1. yo. P3. P2tog. P7. K2. Rep from \* to last 6 sts. (P1. K1) 3 times.

**7th row:** (K1. P1) 3 times. P2. \*K6. K2tog. K2. yo. K3. P2. Rep from \* to last 6 sts. (K1. P1) 3 times.

**8th row:** (P1. K1) 3 times. K2. \*P2. yo. P4. P2tog. P5. K2. Rep from \* to last 6 sts. (P1. K1) 3 times.

**9th row:** (K1. P1) 3 times. P2. \*K4. K2tog. K3. yo. K4. P2. Rep from \* to last 6 sts. (K1. P1) 3 times.

**10th row:** (P1. K1) 3 times. K2. \*P3. yo. P5. P2tog. P3. K2. Rep from \* to last 6 sts. (P1. K1) 3 times.

**11th row:** (K1. P1) 3 times. P2. \*K13. P2. Rep from \* to last 6 sts. (K1. P1) 3 times.

**12th row:** (P1. K1) 3 times. K2. \*P13. K2. Rep from \* to last 6 sts. (P1. K1) 3 times.

**13th row:** (K1. P1) 3 times. P2. \*K1. yo. ssk. K10. P2. Rep from \* to last 6 sts. (K1. P1) 3 times.

**14th row:** (P1. K1) 3 times. K2. \*P9. P2togtbl. P2. yo. K2. Rep from \* to last 6 sts. (P1. K1) 3 times.

**15th row:** (K1. P1) 3 times. P2. \*K2. yo. K1. ssk. K8. P2. Rep from \* to last 6 sts. (K1. P1) 3 times.

**16th row:** (P1. K1) 3 times. K2. \*P7. P2togtbl. P3. yo. P1. K2. Rep from \* to last 6 sts. (P1. K1) 3 times.

**17th row:** (K1. P1) 3 times. P2. \*K3. yo. K2. ssk. K6. P2. Rep from \* to last 6 sts. (K1. P1) 3 times.

**18th row:** (P1. K1) 3 times. K2. \*P5. P2togtbl. P4. yo. P2. K2. Rep from \* to last 6 sts. (P1. K1) 3 times.

**19th row:** (K1. P1) 3 times. P2. \*K4. yo. K3. ssk. K4. P2. Rep from \* to last 6 sts. (K1. P1) 3 times.

**20th row:** (P1. K1) 3 times. K2. \*P3. P2togtbl. P5. yo. P3. K2. Rep from \* to last 6 sts. (P1. K1) 3 times.

These 20 rows form Leaf Pat. Cont in Leaf Pat until work from beg measures approx 58" [147.5 cm], ending on a 2nd or 12th row.

**Next row:** (K1. P1) 6 times. \*K2tog. P1. (K1. P1) 5 times. Rep from \* to end of row. 180 sts.

## Bottom Border

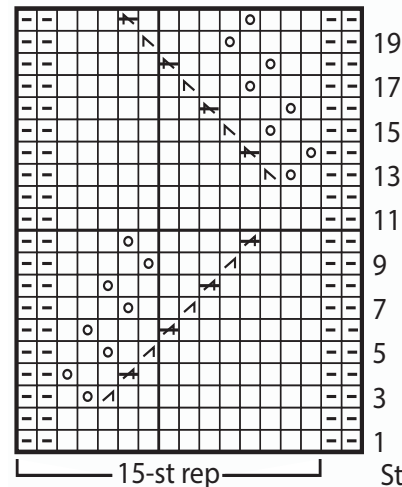
**1st row:** \*P1. K1. Rep from \* to end of row.

**2nd row:** \*K1. P1. Rep from \* to end of row.

Rep last 2 rows of Seed St Pat 3 times more.

Cast off in pat.

Leaf Pat Chart



## Key

- = Knit on RS rows; Purl on WS rows
- ▢ = Purl on RS rows; Knit on WS rows.
- = yo
- ▧ = K2tog
- ▨ = P2tog
- ▩ = ssk
- = P2togtbl

