



CROCHET | SKILL LEVEL: **INTERMEDIATE**

ABBREVIATIONS

Approx = Approximate(ly)

Beg = Begin(ning)

Ch = Chain(s)

Dc = Double crochet

Pat = Pattern

Rem = Remain(ing)

Rep = Repeat

Rnd(s) = Round(s)

Sc = Single crochet

Sl st = Slip stitch

Sp(s) = Space(s)

St(s) = Stitch(es)

Tr = Treble crochet

Tr2tog = (Yoh) twice and draw up a loop in same stitch or chain space 2 rows below as last tr worked. (Yoh and draw through 2 loops on hook) twice. (Yoh) twice and draw up a loop in next skipped ch or stitch 2 rows below. (Yoh and draw through 2 loops on hook) twice. Yoh and draw through remaining 3 loops on hook

Yoh = Yarn over hook

MEASUREMENTS

Approx 35" [89 cm] wide x 45" [114.5 cm] long.

GAUGE

11 sc and 12 rows = 4" [10 cm].

INSTRUCTIONS

Note: Work all tr and tr2tog in front of work (not around sts).

Ch 92 (multiple of 4 ch). See diagram on page 2.

1st row: (RS). 1 sc in 2nd ch from hook. 1 sc in each of next 2 ch. *Ch 1. Skip next ch. 1 sc in each of next 3 ch. Rep from * to end of chain. 91 sts.

2nd row: Ch 3 (counts as dc). 1 dc in each st and ch-1 sp to end of row. Turn.

MATERIALS

Caron® One Pound™ (16 oz/453.6 g; 812 yds/742 m)

Main Color (MC) Rose (10517) **2 balls**

Contrast A White (10501) **1 ball**

Size U.S. K/10½ (6.5 mm) crochet hook **or size needed to obtain gauge.**

3rd row: Ch 1. 1 sc in first dc. 1 tr in next skipped ch 2 rows below. Skip next dc (behind tr). *1 sc in next dc. Ch 1. Skip next dc. 1 sc in next dc. Tr2tog. Skip next dc (behind Tr2tog). Rep from * to last 5 sts. 1 sc in next dc. Ch 1. Skip next dc. 1 sc in next dc. 1 tr in same skipped ch 2 rows below as last tr. Skip next dc (behind tr). 1 sc in top of ch 3. Turn.

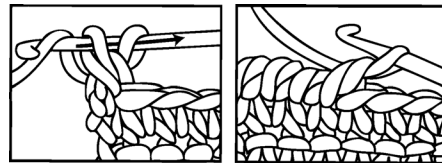
4th row: As 2nd row.

5th row: Ch 1. 1 sc in first dc. 1 tr in next skipped dc 2 rows below. Skip next dc (behind tr). *1 sc in next dc. Ch 1. Skip next dc. 1 sc in next dc. Tr2tog. Skip next dc (behind Tr2tog). Rep from * to last 5 sts. 1 sc in next dc. Ch 1. Skip next dc. 1 sc in next dc. 1 tr in same skipped dc 2 rows below as last tr. Skip next dc (behind tr). 1 sc in top of ch 3. Turn.

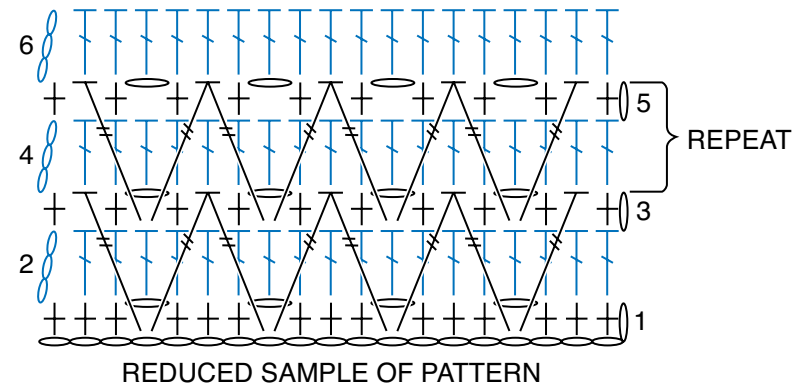
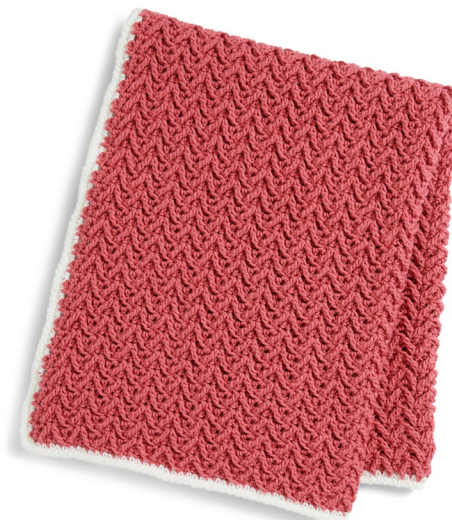
Rep 2nd to 5th rows for pat until work from beg measures approx 45" [114.5 cm], ending on a 3rd or 5th row of pat. Fasten off.

Edging: 1st rnd: (RS). Join A with sl st in any corner of Blanket. Ch 1. Work 3 sc in same sp. Work sc evenly around outer edges, working 3 sc in each corner. Join with sl st in first sc.

2nd rnd: Ch 1. Working from **left to right** instead of from **right to left** as usual, work 1 reverse sc in each sc around. Join with sl st in first sc. Fasten off.



REVERSE SC



STITCH KEY

- = chain (ch)
- ⊥ = single crochet (sc)
- ⊥ = double crochet (dc)
- ⊥ = treble crochet (tr)
- ⊥ = treble crochet 2 together (tr2tog)