



## MATERIALS

Caron® Simply Soft® (Solids: 6 oz/170 g; 315 yds/288 m; Heathers: 5 oz/141.7 g; 250 yds/228 m)

<b>Contrast A</b> Dk Country Blue (9711)	1	ball
<b>Contrast B</b> Country Blue (9710)	1	ball
<b>Contrast C</b> Lt Country Blue (9709)	1	ball
<b>Contrast D</b> Lt Country Peach (9737)	1	ball
<b>Contrast E</b> Off White (9702)	1	ball
<b>Contrast F</b> Gray Heather (H9509)	1	ball
<b>Contrast G</b> Woodland Heather (H9503)	1	ball

Size U.S. I/9 (5.5 mm) crochet **or size needed to obtain gauge.**



CROCHET | SKILL LEVEL: INTERMEDIATE

## ABBREVIATIONS

<b>Approx</b> =	<b>Dc</b> = Double crochet	<b>Sl st</b> = Slip stitch
Approximately	<b>Pat</b> = Pattern	<b>St(s)</b> = Stitch(es)
<b>Beg</b> = Beginning	<b>Rep</b> = Repeat	<b>WS</b> = Wrong side
<b>Ch</b> = Chain(s)	<b>RS</b> = Right side	
<b>Cont</b> = Continue	<b>Sc</b> = Single crochet	

## MEASUREMENTS

Approx 8" x 66" [20.5 x 167.5 cm].

## GAUGE

12 sc and 13 rows = 4" [10 cm].

## INSTRUCTIONS

**Note:** When working from chart, carry yarn not in use loosely across top of work. Work next row over strand of yarn which is not in use.

### Scarf

**Ribbing:** With A, ch 8.

**1st row:** (RS). 1 sc in 2nd ch from hook and each ch to end of chain. Turn. 7 sc.

**2nd row:** Ch 1. *Working in back loops only*, 1 sc in each sc to end of row. Turn.

Rep last row until work, without stretching, from beg measures 8" [20.56 cm]. **Do not** fasten off.

**Set-up row:** Work 24 sc across longer side of ribbing. Turn.

Beg working Chart, (see page 2) noting 8-st rep will be worked 3 times, *reading RS rows from right to left and WS rows from left to right.*

**1st row:** (RS). Ch 1. 1 sc in each sc across. Turn.

Rep last row, and cont working Chart I until 42nd row of Chart is complete.

Break all colors but E.

With E only, proceed as follows:

**1st row:** (RS). Ch 1. 1 sc in first sc. \*1 dc in next sc. 1 sc in next sc. Rep from \* to last sc. 1 dc in last sc. Turn.

**2nd row:** Ch 1. 1 sc in first dc. \*1 dc in next sc. 1 sc in next dc. Rep from \* to last sc. 1 dc in last sc. Turn.

Rep last row for pat until work from beg measures approx 51" [129.5 cm], ending on a RS row of pat.

**Next row:** (WS). Ch 1. 1 sc in each st to end of row. Turn. 24 sc.

Beg working Chart in reverse, beg with 42nd row, until 1st row of Chart is complete, *reading RS rows from right to left and WS rows from left to right.*

Break all colors but A.

**Ribbing:** With A, ch 8.

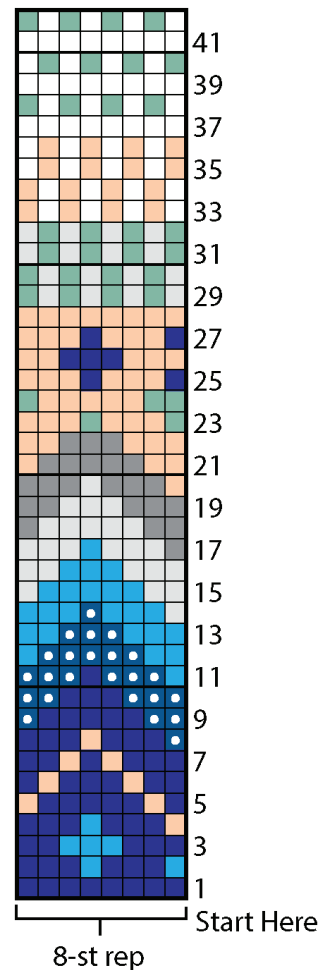
**1st row:** 1 sc in 2nd ch from hook and each of next 6 ch. Skip next sc of last row of Scarf. Sl st in next sc. Turn.

**2nd row:** Ch 1. *Working in back loops only*, 1 sc in each sc to end of row. Turn.

**3rd row:** Ch 1. *Working in back loops only*, 1 sc in each sc to end of row. Skip next sc of last row of Scarf. Sl st in next sc. Turn.

Rep 2nd and 3rd rows for ribbing across short end of Scarf, ending on 3rd row. Fasten off.

Chart



Key

- = With A, 1 sc
- = With B, 1 sc
- = With C, 1 sc
- = With D, 1 sc
- = With E, 1 sc
- = With F, 1 sc
- = With G, 1 sc