



chic sheep
BY Marly Bird™

Bohemian Chic Color Cardi

Set your color inhibitions free and choose free-spirited colors for this season-spanning longer-length crochet cardi. Layer it over long sleeves in the winter or sleeveless outfits as the weather warms. You'll love the way this talented designer engineered the border and pockets!

LW5902

©2018 Coats & Clark



crochet



Designed by Robyn Chachula

What you will need:

RED HEART® Chic Sheep by Marly Bird™: 5 (6, 7, 7, 8) balls 5687 VIP **A**, 2 (2, 2, 3, 3) balls 5907 Sangria **B**, 1 ball each 5620 Green Tea **C** and 5635 Crème de Mint **D**

Susan Bates® Crochet Hook: 6mm [US J-10] and 5.5mm [US I-9]

Susan Bates® split lock stitch markers

Yarn needle

GAUGE: 3 shells = 5¼" (13.5 cm); 8 rows = 4¼" (11 cm) body lace pattern with larger hook; 3 shells = 5¼" (13.5 cm); 8 rows = 5½" (14 cm) in edging pattern with smaller hook. **CHECK YOUR GAUGE.** Use any size hook to obtain the gauge.

BUY YARN



RED HEART® Chic Sheep by Marly Bird™, Art. R170 100% Merino Wool available 3.5 oz (100 g), 186 yd (170 m) balls

Directions are for size S; changes for sizes M, L, XL, and 2X are in parentheses.

Cardi measures 38 ½ (42, 45½, 49, 52½)" (98 (106.5, 115.5, 124.5, 133.5) cm) around bust and 24½ (24½, 25½, 25½, 26½) (62 (62, 65, 65, 67.5) cm) in length.

NOTES

When instructed to work into the back bar of a st:

For a ch: Work into the single loop on back of ch st (looks like a ridge).

For a sc or dc: Work into horizontal bar under top 2 loops on back side of st.

SPECIAL STITCHES

Beg dctog (beginning double crochet together) = [yo, insert hook in back bar of next dc and pull up a loop, yo and draw through 2 loops on hook] 6 times, yo and draw through all 7 loops on hook.

End dctog (ending double crochet together) = [yo, insert hook in back bar of next ch and pull up a loop, yo draw through 2 loops on hook] 3 times, [yo, insert hook in back bar of next dc and pull up a loop, yo and draw through 2 loops on hook] 3 times, yo, insert hook in next sc and pull up a loop, yo and draw through 2 loops on hook, yo and draw through all 8 loops on hook.

Dc4tog (double crochet 4 together) = [yo, insert hook in next st and pull up a loop, yo and draw through 2 loops on hook] 4 times, yo and draw through all 5 loops on hook.

Dc5tog (double crochet 5 together) = [yo, insert hook in next st and pull up a loop, yo and draw through 2 loops on hook] 5 times, yo and draw through all 6 loops on hook.

Dc13tog (double crochet 13 together)

= [yo, insert hook in back bar of next ch and pull up a loop, yo and draw through 2 loops on hook] 3 times, [yo, insert hook in back bar of next dc and pull up a loop, yo and draw through 2 loops on hook] 3 times, yo, insert hook in next sc and pull up a loop, yo and draw through 2 loops on hook, [yo, insert hook in back bar of next dc and pull up a loop, yo and draw through 2 loops on hook] 6 times, yo and draw through all 14 loops on hook.

Fsc (foundation single crochet) = First st: ch 2, insert hook in 2nd ch from hook, yo and pull up a loop, yo and draw through 1 loop on hook (this forms the base ch), yo and draw through 2 loops on hook (this forms the first fsc).

*** Next st:** insert hook in base ch of previous st, yo and pull up a loop, yo and draw through 1 loop on hook (this forms the base ch), yo and draw through 2 loops on hook (this forms the next fsc). Repeat from * to desired number of fsc.

Shell: (3 dc, ch 1, 3 dc) in indicated st.

X-shell (extended shell) = 3 dc in indicated st, ch 6, dc in back bar of 4th ch from hook, dc in back bars of each of next 2 ch, 3 more dc in same st as first 3 dc of x-shell.

BACK

With **A** and larger hook, ch 90 (98, 106, 114, 122).

Row 1 (right side): Sc in 2nd ch from hook, * skip 3 ch, shell in next ch, skip 3 ch, sc in next ch; repeat from * to end, turn - 11 (12, 13, 14, 15) shells.

continued...





Row 2: Ch 7 (counts as 1 tr and 1 ch-3 space), * (sc, ch 3, sc) in next shell, ch 3, tr in next sc, ch 3; repeat from * to last shell, (sc, ch 3, sc) in last shell, ch 3, tr in last sc, turn.

Row 3: Ch 4 (counts as 1 tr), 3 dc in first tr, * skip next ch-3 space, sc in next ch-3 space, shell in next tr; repeat from * to last 3 ch-3 spaces, skip next ch-3 space, sc in next ch-3 space, (3 dc, tr) in 4th ch of beginning ch-7, turn.

Row 4: Ch 1, sc in first tr, * ch 3, tr in next sc, ch 3, (sc, ch 3, sc) in next shell; repeat from * to last sc, ch 3, tr in last sc, ch 3, sc in 4th ch of beginning ch-4, turn.

Row 5: Ch 1, sc in first sc, * shell in next tr, skip next ch-3 space, sc in next ch-3 space; repeat from * to last tr, shell in next tr, skip next ch-3 space, sc in last sc, turn.

Repeat Rows 2-5 4 more times, then Row 2 only once more.

SLEEVES

Remove hook and place a marker in last loop to keep it from unraveling.

Join new yarn with slip st in marked ch st at other edge. Ch 16, then fasten off.

Replace hook in marked loop and remove this marker.

Row 1 (right side): Ch 20, 3 dc in 5th ch from hook, skip 3 ch, sc in next ch, skip 3 ch, shell in next ch, skip 3 ch, sc in next ch, * shell in next tr, skip next ch-3 space, sc in next ch-3 space; repeat from * to ending ch, shell in marked ch and remove marker from this ch, skip 3 ch, sc in next ch, skip 3 ch, shell in next ch, skip 3 ch, sc in next ch, skip 3 ch, (3 dc, tr) in last ch, turn - 14 (15, 16, 17, 18) shells + 2 half shells.

Row 2: Ch 1, sc in first tr, * ch 3, tr in next sc, ch 3, (sc, ch 3, sc) in next shell; repeat from * to last sc, ch 3, tr in last sc, ch 3, sc in 4th ch of beginning ch-4, turn - 15 (16, 17, 18, 19) shells.

Row 3: Ch 1, sc in first sc, * shell in next tr, skip next ch-3 space, sc in next ch-3 space; repeat from * to last tr, shell in next tr, skip next ch-3 space, sc in last sc, turn.

Row 4: Ch 7 (counts as 1 tr and 1 ch-3 space), * (sc, ch 3, sc) in next shell, ch 3, tr in next sc, ch 3; repeat from * to last shell, (sc, ch 3, sc) in last shell, ch 3, tr in last sc, turn.

Row 5: Ch 4 (counts as 1 tr), 3 dc in first tr, * skip next ch-3 space, sc in next ch-3 space, shell in next tr; repeat from * to last 3 ch-3 spaces, skip next ch-3 space, sc in next ch-3 space, (3 dc, tr) in 4th ch of beginning ch-7, turn.

Repeat Rows 2-5 only 2 (2, 2, 2, 3) more times.

Next row (wrong side): Ch 1, sc in first tr, * ch 3, tr in next sc, ch 3, (sc, ch 3, sc) in next shell; repeat from * 4 (4, 5, 5, 5) more times, [ch 3, tr in next sc, ch 3, sc in next shell] 4 (5, 4, 5, 6) times, repeat from * to * to end, sc in 4th ch of beginning ch-4, turn.

For sizes S (L, XL) only:

RIGHT FRONT

Row 1 (right side): Ch 1, sc in first sc, * shell in next tr, skip next ch-3 space, sc in next ch-3 space; repeat from * for 5 (6, 6) shells total, (3 dc, tr) in next tr, turn - 5 (6, 6,) shells and 1 half shell.

Row 2: Ch 1, sc in first tr, * ch 3, tr in next sc, ch 3, (sc, ch 3, sc) in next shell; repeat from * to last sc, ch 3, tr in last sc, turn.

Row 3: Ch 4 (counts as 1 tr), 3 dc in first tr, * skip next ch-3 space, sc in next ch-3 space, shell in next tr; repeat from * to last sc, sc in last sc, turn.

Row 4: Ch 7 (counts as 1 tr and 1 ch-3 space), * (sc, ch 3, sc) in next shell, ch 3, tr in next sc, ch 3; repeat from * across, sc in 4th ch of beginning ch-4, turn.

Row 5: Ch 1, sc in first sc, * shell in next tr, skip next ch-3 space, sc in next ch-3 space; repeat from * across, (3 dc, tr) in 4th ch of beginning ch-7, turn.

Repeat Rows 2-5 only 2 (3, 3) times.
Next row (wrong side): Ch 1, sc in first tr, [ch 3, tr in next sc, ch 3, (sc, ch 3, sc) in next shell] 3 (4, 4) times, [ch 3, tr in next sc, ch 3, sc in next shell] twice, ch 3, tr in last sc.
Fasten off.

End Right Sleeve

With right side facing, skip 2 tr on last row and join **A** with slip st in next tr.

Row 1 (right side): Ch 4 (counts as 1 tr), 3 dc in same tr as joining slip st, * skip next ch-3 space, sc in next ch-3 space, shell in next tr; repeat from * to last sc, sc in last sc, turn. 3 (4, 4) shells + 1 half shell.

Row 2: Ch 7 (counts as 1 tr and 1 ch-3 space), * (sc, ch 3, sc) in next shell, ch 3, tr in next sc, ch 3; repeat from * across, sc in 4th ch of beginning ch-4, turn.

Row 3: Ch 1, sc in first sc, * shell in next tr, skip next ch-3 space, sc in next ch-3 space; repeat from * across, (3 dc, tr) in 4th ch of beginning ch-7, turn.

Row 4: Ch 1, sc in first tr, * ch 3, tr in next sc, ch 3, (sc, ch 3, sc) in next shell; repeat from * to last sc, ch 3, tr in last sc, turn.

Row 5: Ch 4 (counts as 1 tr), 3 dc in first tr, * skip next ch-3 space, sc in next ch-3 space, shell in next tr; repeat from * to last sc, sc in last sc, turn.

Repeat Rows 2-5 6 more times, then repeat Rows 2 and 3 only once more.

Next Row (wrong side): Ch 1, sc in first tr, * ch 3, tr in next sc, ch 3, sc in next shell; repeat from * to last sc, ch 3, tr in last sc.

Fasten off.

LEFT FRONT

Left Neck Edge and Front Panel

With right side facing and using larger hook, skip 8 (8, 10) ch-3 spaces at Back neck edge, and join **A** with slip st in next tr.

Row 1 (right side): Ch 4 (counts as 1 tr), 3 dc in same tr as joining slip st, * skip next ch-3 space, sc in next ch-3 space, shell in next tr; repeat from * to last sc, sc in last sc, turn - 5 (6, 6) shells + 1 half shell.

Row 2: Ch 7 (counts as 1 tr and 1 ch-3 space), * (sc, ch 3, sc) in next shell, ch 3, tr in next sc, ch 3; repeat from * to end, sc in 4th ch of beginning ch-4, turn.

Row 3: Ch 1, sc in first sc, * shell in next tr, skip next ch-3 space, sc in next ch-3 space; repeat from * to end, (3 dc, tr) in 4th ch of beginning ch-4, turn.

Row 4: Ch 1, sc in first tr, * ch 3, tr in next sc, ch 3, (sc, ch 3, sc) in next shell; repeat from * to last sc, ch 3, tr in last sc, turn.

Row 5: Ch 4 (counts as 1 tr), 3 dc in first tr, * skip next ch-3 space, sc in next ch-3 space, shell in next tr; repeat from * to last sc, sc in last sc, turn.

Repeat Rows 2-5 only 2 (3, 3) times.

Next row (wrong side): Ch 7, [sc in next shell, ch 3, tr in next sc, ch 3] twice, * (sc, ch 3, sc) in next shell, ch 3, tr in next sc, ch 3; repeat from * to end, sc in 4th ch of beginning ch-4, turn.

continued...





End Left Sleeve

Row 1 (right side): Ch 1, sc in first sc, [shell in next tr, skip next ch-3 space, sc in next ch-3 space] 3 (4, 4) times, (3 dc, tr) in next tr, turn - 3 (4, 4) shells + 1 half shell.

Row 2: Ch 1, sc in first tr, * ch 3, tr in next sc, ch 3, (sc, ch 3, sc) in next shell; repeat from * to last sc, ch 3, tr in last sc, turn.

Row 3: Ch 4 (counts as 1 tr), 3 dc in first tr, * skip next ch-3 space, sc in next ch-3 space, shell in next tr; repeat from * to last sc, sc in last sc, turn.

Row 4: Ch 7 (counts as 1 tr and 1 ch-3 space), * (sc, ch 3, sc) in next shell, ch 3, tr in next sc, ch 3; repeat from * to end, sc in 4th ch of beginning ch-4, turn.

Row 5: Ch 1, sc in first sc, * shell in next tr, skip next ch-3 space, sc in next ch-3 space; repeat from * to end, (3 dc, tr) in 4th ch of beginning ch-7, turn.

Repeat Rows 2-5: 6 more times, then repeat Rows 2 and 3 only once more.

Next row (wrong side): Ch 7 (counts as 1 tr and 1 ch-3 space), * sc in next shell, ch 3, tr in next sc, ch 3; repeat from * to end, sc in 4th of beginning ch-4. Fasten off.

For sizes M (2X) only:

RIGHT FRONT

Row 1 (right side): Ch 1, sc in first sc, * shell in next tr, skip next ch-3 space, sc in next ch-3 space; repeat from * for 6 (7) shells total, sc in next sc, turn - 6 (7) shells.

Row 2: Ch 7 (counts as 1 tr and 1 ch-3 space), * (sc, ch 3, sc) in next shell, ch 3, tr in next sc, ch 3; repeat from * to last shell, (sc, ch 3, sc) in last shell, ch 3, tr in last sc, turn.

Row 3: Ch 4 (counts as 1 tr), 3 dc in first tr, * skip next ch-3 space, sc in next ch-3 space, shell in next tr; repeat from * to last 3 ch-3 spaces, skip next ch-3 space, sc in next ch-3 space, (3 dc, tr) in 4th ch of beginning ch-7, turn.

Row 4: Ch 1, sc in first tr, * ch 3, tr in next sc, ch 3, (sc, ch 3, sc) in next shell; repeat from * to last sc, ch 3, tr in last sc, ch 3, sc in 4th ch of beginning ch-4, turn.

Row 5: Ch 1, sc in first sc, * shell in next tr, skip next ch-3 space, sc in next ch-3 space; repeat from * to last tr, shell in next tr, skip next ch-3 space, sc in last sc, turn.

Repeat Rows 2-5 only 2 (3) times.

Next row (wrong side): Ch 7 (counts as 1 tr and 1 ch-3 space), [(sc, ch 3, sc) in next shell, ch 3, tr in next sc, ch 3] 4 (5) times, sc in next shell, ch 3, tr in next sc, ch 3, sc in next shell, ch 3, tr in last sc. Fasten off.

End Right Sleeve

With right side facing, skip 2 tr on last row, and join **A** with slip st in next tr.

Row 1 (right side): Ch 4 (counts as 1 tr), 3 dc in same tr as joining slip st, * skip next ch-3 space, sc in next ch-3 sp, shell in next tr; repeat from * to end, (3 dc, tr) in 4th ch of beginning ch-4, turn - 3 (4) shells and 2 half-shells.

Row 2: Ch 1, sc in first tr, * ch 3, tr in next sc, ch 3, (sc, ch 3, sc) in next shell; repeat from * to last sc, ch 3, tr in last sc, ch 3, sc in 4th ch of beginning ch-4, turn.

Row 3: Ch 1, sc in first sc, * shell in next tr, skip next ch-3 space, sc in next ch-3 space; repeat from * to last tr, shell in last tr, skip next ch-3 space, sc in last sc, turn.

Row 4: Ch 7 (counts as 1 tr and 1 ch-3 space), * (sc, ch 3, sc) in next shell, ch 3, tr in next sc, ch 3; repeat from * to last shell, (sc, ch 3, sc) in last shell, ch 3, tr in last sc, turn.

Row 5: Ch 4 (counts as 1 tr), 3 dc in first tr, * skip next ch-3 space, sc in next ch-3 space, shell in next tr; repeat from * to last 3 ch-3 spaces, skip next ch-3 space, sc in next ch-3 space, (3 dc, tr) in 4th ch of beginning ch-7, turn.

Repeat Rows 2-5 6 more times, then repeat Rows 2 and 3 only once more.

Next Row (wrong side): Ch 7 (counts as 1 tr and 1 ch-3 space), * sc in next shell, ch 3, tr in next sc, ch 3; repeat from * to last shell, sc in last shell, ch 3, tr in last sc. Fasten off.

LEFT FRONT

With right side facing, skip 8 (10) ch-3 spaces at Back neck edge, and join **A** with slip st in next sc.

Row 1 (right side): Ch 1, sc in same sc as joining slip st, * shell in next tr, skip next ch-3 space, sc in next ch-3 space; repeat from * to last sc, sc in last sc, turn -6 (7) shells.

Row 2: Ch 7 (counts as 1 tr and 1 ch-3 space), * (sc, ch 3, sc) in next shell, ch 3, tr in next sc, ch 3; repeat from * to last shell, (sc, ch 3, sc) in last shell, ch 3, tr in last sc, turn.

Row 3: Ch 4 (counts as 1 tr), 3 dc in first tr, * skip next ch-3 space, sc in next ch-3 space, shell in next tr; repeat from * to last 3 ch-3 spaces, skip next ch-3 space, sc in next ch-3 space, (3 dc, tr) in 4th ch of beginning ch-7, turn.

Row 4: Ch 1, sc in first tr, * ch 3, tr in next sc, ch 3, (sc, ch 3, sc) in next shell; repeat from * to last sc, ch 3, tr in last sc, ch 3, sc in 4th ch of beginning ch-4, turn.

Row 5: Ch 1, sc in first sc, * shell in next tr, skip next ch-3 space, sc in next ch-3 space; repeat from * to last tr, shell in next tr, skip next ch-3 space, sc in last sc, turn.

Repeat Rows 2-5: 2 (3) more times.

Next row (wrong side): Ch 7 (counts as 1 tr and 1 ch-3 space), [sc in next shell, ch 3, tr in next sc, ch 3] twice, * (sc, ch 3, sc) in next shell, ch 3, tr in next sc, ch 3; repeat from * to last shell, (sc, ch 3, sc) in last shell, ch 3, tr in last sc, turn.

End Left Sleeve

Row 1 (right side): Ch 4 (counts as 1 tr), 3 dc in first tr, [skip next ch-3 space, sc in next ch-3 space, shell in next tr] 3 (4) times, skip next ch-3 space, sc in next ch-3 space, (3 dc, tr) in next tr, turn - 3 (4) shells + 2 half shells.

Row 2: Ch 1, sc in first tr, * ch 3, tr in next sc, ch 3, (sc, ch 3, sc) in next shell; repeat from * to last sc, ch 3, tr in last sc, ch 3, sc in 4th ch of beginning ch-4, turn.

Row 3: Ch 1, sc in first sc, * shell in next tr, skip next ch-3 space, sc in next ch-3 space; repeat from * to last tr, shell in last tr, skip next ch-3 space, sc in last sc, turn.

Row 4: Ch 7 (counts as 1 tr and 1 ch-3 space), * (sc, ch 3, sc) in next shell, ch 3, tr in next sc, ch 3; repeat from * to last shell, (sc, ch 3, sc) in last shell, ch 3, tr in last sc, turn.

Row 5: Ch 4 (counts as 1 tr), 3 dc in first tr, * skip next ch-3 space, sc in next ch-3 space, shell in next tr; repeat from * to last 3 ch-3 spaces, skip next ch-3 space, sc in next ch-3 space, (3 dc, tr) in 4th ch of beginning ch-7, turn.

Repeat Rows 2-5 6 more times, then repeat Rows 2 and 3 only once more.

continued...





Next Row (wrong side): Ch 7 (counts as 1 tr and 1 ch-3 space), * sc in next shell, ch 3, tr in next sc, ch 3; repeat from * to last shell, sc in last shell, ch 3, tr in last sc. Fasten off.

For all sizes:

BORDER STRIP

With **B** and smaller hook, fsc 133 (145, 157, 163, 175), turn.

Row 1 (right side): Ch 1, sc in first fsc, * skip 2 fsc, x-shell in next fsc, skip 2 fsc, sc in next fsc; repeat from * to end, turn. – 22 (24, 26, 27, 29) x-shells.

Change to **C**.

Row 2: Ch 3, beg dctog over first 6 dc, * ch 3, sc in next ch-3 space, ch 3, dc13tog over next 13 sts; repeat from * to last ch-3 space, ch 3, sc in next ch-3 space, ch 3, end dctog over last 7 sts, turn.

Row 3: Row 3: Ch 8, sc in 3rd ch from hook, sc in each of next 2 ch, 3 dc in end dctog of previous row, * sc in next sc, x-shell in next dc13tog; repeat from * to last sc, sc in last sc, 3 dc in last dc13tog, ch 5, sc in back bar of 3rd ch from hook, sc in back bar of each of next 2 ch, ch 2, slip st in beg dctog of previous row, turn. Fasten off **C**.

Row 4 (wrong side): Join **A** with slip st in ch-2 space, sc in same space, * ch 3, dc13tog over next 13 sts, ch 3, sc in next ch-3 space; repeat from * to end, placing final sc in last ch-2 space, turn.

Row 5: Ch 1, sc in first sc, * x-shell in next dc13tog, sc in next sc; repeat from * to end, turn.

Change to **D**.

Rows 6-7: Repeat Rows 2 and 3.

Change to **B**.

Row 8: Repeat Row 4.

Fasten off.

FINISHING

Body Edging

With right side facing and using smaller hook, join **A** with slip st anywhere along edge of Body.

Round 1 (right side): Ch 1, sc evenly around entire edge of Body working 3 sc in each outer corner, join with slip st in first sc.

Fasten off.

Border Strip Edging

With right side facing and using smaller hook, join **B** with slip st anywhere along edge of Border Strip.

Round 1 (right side): Ch 1, sc evenly around entire edge of Body working 3 sc in each corner, join with slip st in first sc. Fasten off.

Block both pieces to measurements.

Underarm and Side Seaming

With wrong sides facing out and using smaller hook, join **A** with slip st in corner sc of underarm at edge of cuff, ch 1, * remove loop from hook and thread it through corresponding sc on opposite panel, replace loop onto hook, sc in next sc on current panel; repeat from * across underarm and down side seam.

Fasten off.

Work opposite side seam the same way.

Cuff Edging

With right side facing and using smaller hook, join **A** with slip st in any st on edge of cuff.

Round 1: Ch 1, sc in each sc around, join with slip st in first sc.

Fasten off.

Border Strip Seaming

Align center bottom of Border Strip with center bottom of Back and pin in place. With right side facing and using smaller hook and **B**, slip st bottom edge of Border Strip to bottom edge of Back by holding yarn on wrong side hook on right side, and working from the center outward to the side seams.

Collar

Place a marker in 13th sc on either side of top edge of Border Strip (since Border Strip is upside down, this would be the foundation edge rather than the final row edge).

Place a marker in 29th sc from bottom on vertical edge of each Front panel. With wrong side facing and using smaller hook, join **B** in marked sc of Border Strip near Left Front panel.

Row 1 (wrong side): Ch 8, sc in marked sc on Left Front panel, sc in each sc up Left Front panel, around neck edge, and down Right Front panel to marked st, sc in marked st, ch 8, slip st in marked sc of Border Strip near Right Front panel.

Row 2: Slip st in each of next 2 sts of Border Strip, turn, dc in each of next 8 ch, dc in each sc to last 8 ch, dc in each of last 8 ch, skip 2 sts of Border Strip on opposite side, slip st in next st of Border Strip.

Rows 3-5: Slip st in each of next 2 sts of Border Strip, turn, dc in each dc to end, skip 2 sts of Border Strip on opposite side, slip st in next st of Border Strip.

Row 6: Slip st in each of next 2 sts of Border Strip, turn, dc in each of next 31 dc, hdc in each of next 3 dc, sc in each of next 3 dc, slip st in next dc, turn.

Row 7: Slip st in each of first 3 sc, slip st in each of next 2 hdc, sc in each of next 3 dc, hdc in next 3 dc, dc in each dc to end, slip st in next st of Border Strip. Fasten off.

With right side facing and using smaller hook, join **B** with slip st to opposite side of Row 5, 38 dc from the end.

Next 2 rows:

Row 1 (right side): Ch 1, sc in each of next 3 dc, hdc in each of next 3 dc, dc in each dc to end, skip 2 sts of Border Strip on opposite side, slip st in next st of Border Strip.

Row 2: Slip st in each of next 2 sts of Border Strip, turn. Dc in next 25 dc, hdc in each of next 3 dc, sc in each of next 3 dc, slip st in next st. Fasten off.

Remove all markers.

Pocket Lining Extension – Right Front

With right side facing and using smaller hook, join **B** with slip st in bottom Right Front panel corner.

Row 1 (right side): Ch 1, sc in each of next 28 sc, turn.

Rows 2-7: Ch 3, dc in each st to end, turn. Fasten off.

Pocket Lining Extension – Left Front

With wrong side facing and using smaller hook, join **B** with slip st in bottom Left Front panel corner.

Row 1 (wrong side): Ch 1, sc in each of next 28 sc, turn.

Rows 2-7: Ch 3, dc in each st to end, turn. Fasten off.

continued...





Outer Pocket Edge Seam and Collar Accent

With right side facing and using smaller hook, join **D** with slip st in bottom right corner of Border Strip (since Border Strip is upside down, this would be the final row edge rather than the foundation edge).

Row 1 (right side): Working through both Pocket Lining Extension and Border Strip layers at the same time to seam together, sc in each st up Right Front edge, around neck edge, and down Left Front edge. Fasten off.

Bottom Edge and Seam

With right side facing and using smaller hook, join **B** with slip st in bottom right corner of Border Strip (since Border Strip is upside down, this would be the final row edge rather than the foundation edge).

Row 1 (right side): Working through both Front Panel and Border Strip layers at the same time to seam together, sc in each st across entire bottom edge. Fasten off.

Vertical Inner Pocket Seam

With **A** and yarn needle, sew down inner vertical edges at bottom of each Front panel to wrong side of Border Strip to form Pocket.

Pocket Corner - Right Front

Mark sc 9 sts away from Collar sts at top edge of right Pocket.

With wrong side facing and using smaller needle, join **B** with slip st in marked st.

Row 1 (wrong side): Sc in next st, hdc in next st, dc in each of next 4 sts, dc4tog over next 2 sts of Border Strip and first 2 sts of collar, dc in each of next 4 sts, hdc in next st, sc in next st, slip st in next st, turn.

Row 2: Sc in first sc, hdc in next hdc, dc in each of next 2 dc, dc5tog over next 5 sts, dc in each of next 2 dc, hdc in next hdc, sc in next sc, slip st in last st, turn

Row 3: Sc in each st to last st, slip st in last st.

Fasten off.

Pocket Corner - Left Front

Mark sc 9 sts away from Collar sts at top edge of left Pocket.

With right side facing and using smaller needle, join **B** with slip st in marked st.

Row 1 (right side): Sc in next st, hdc in next st, dc in each of next 4 sts, dc4tog over next 2 sts of Border Strip and first 2 sts of collar, dc in each of next 4 sts, hdc in next st, sc in next st, slip st in next st, turn.

Row 2: Sc in first sc, hdc in next hdc, dc in each of next 2 dc, dc5tog over next 5 sts, dc in each of next 2 dc, hdc in next hdc, sc in next sc, slip st in last st, turn

Row 3: Sc in each st to last st, slip st in last st.

Fasten off.

Remove all markers.

Weave in all loose ends.

ABBREVIATIONS

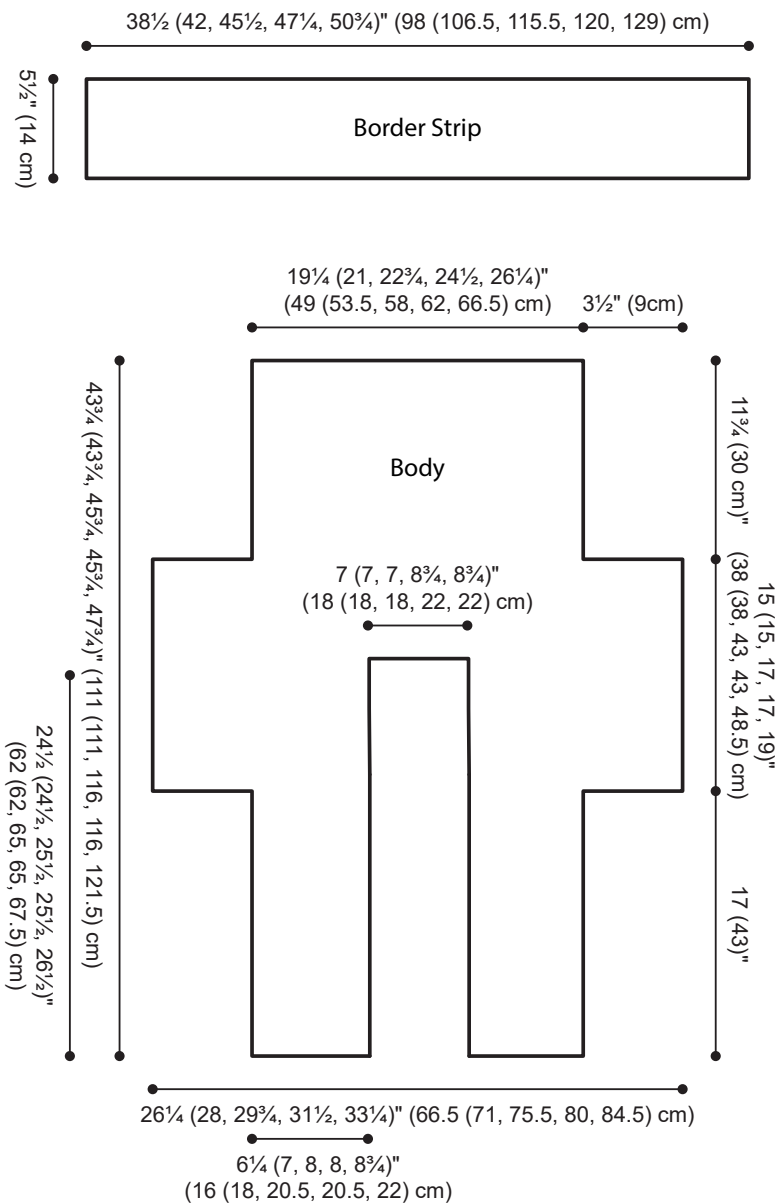
A, B, C, D = Color A, Color B, Color C, Color D; **ch** = chain; **dc** = double crochet; **st(s)** = stitch(es); **sc** = single crochet; **tr** = treble crochet; **yo** = yarn over; **()** = work directions in parentheses all in same st; **[]** = work directions in brackets the number of times specified; ***** = repeat whatever follows the * as indicated.

Note from Marly: I would like to thank my long time friend and favorite crochet designer, Robyn Chachula, for her contribution to the Chic Sheep by Marly Bird™ collection. I was an instant fan of her work and admire her ability to match up style and fashion with crochet. When people tell me "crochet sweaters are frumpy" I always direct them to Robyn's patterns to prove them wrong. Having her design something with my own yarn line is a dream come true. Her Bohemian Chic Color Vest is a great representation of her aesthetic and ability to pair up color and crochet stitches for the perfect balance. To learn more about Robyn Chachula and her designs visit crochetbyfaye.com

See next page for schematics and alternate photos

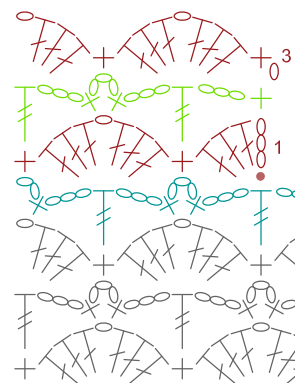


LW5902 Bohemian Chic Color Cardi



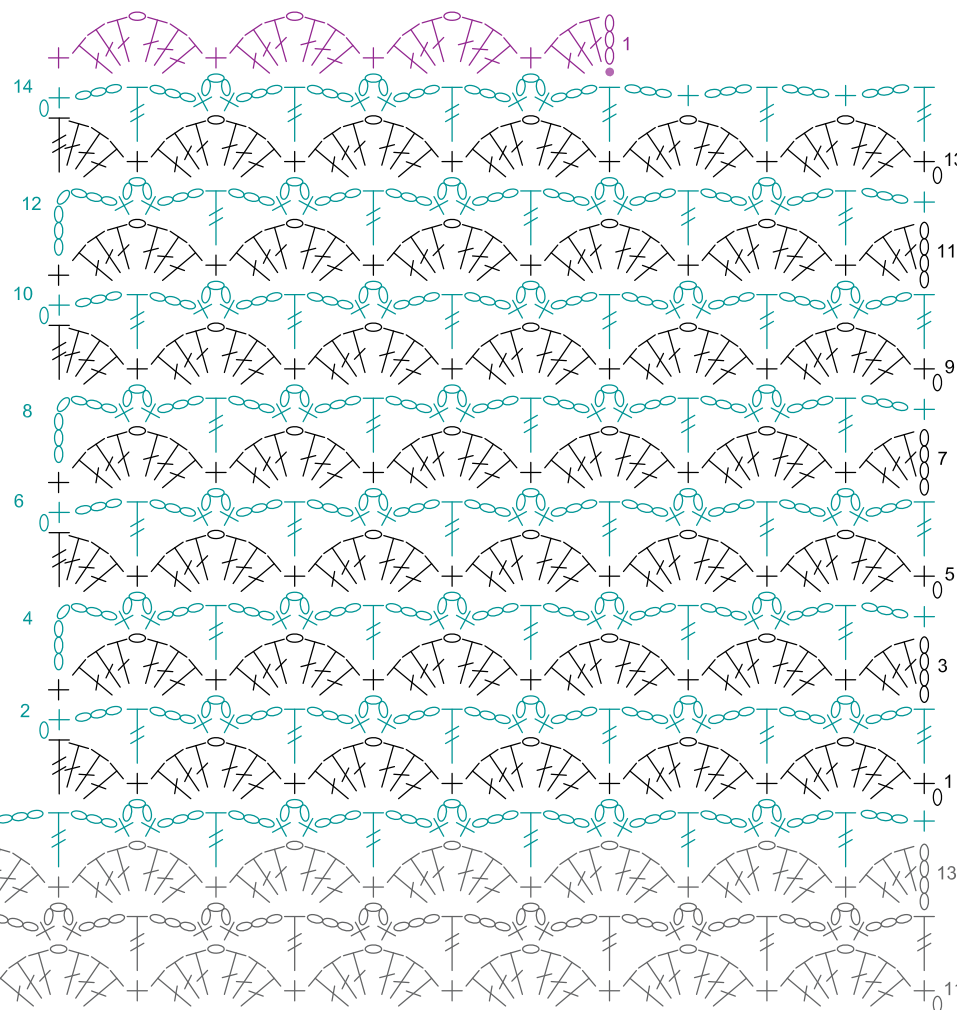


S L XL Neck and Front



Symbols Key

- ch
- + sc
- |/ dc
- ||/ tr





Symbols Key

- ch
- + sc
- ┆ dc
- ┆ tr

M 2X Neck and Front

