



 KNIT | SKILL LEVEL: **EASY**

ABBREVIATIONS

Beg = Begin(ning)

K = Knit

Rep = Repeat

RS = Right side

P = Purl

St(s) = Stitch(es)

WS = Wrong side

Yo = Yarn over

MEASUREMENTS

Approx 46 x 43" [117 x 109 cm].

GAUGE

18 sts and 24 rows = 4" [10 cm] with larger needles in stocking st. Each Motif measures approx 7 x 9" [18 x 23 cm].

INSTRUCTIONS

Block I (make 3 each with A and B). With pair of needles, cast on 42 sts. Proceed in Box St Pat as follows:

1st row: (RS). K2. *P2. K2. Rep from * to end of row.

2nd row: P2. *K2. P2. Rep from * to end of row.

3rd row: As 2nd row.

4th row: As 1st row. Rep 1st to 4th rows of Box St Pat until work from beg measures 7" [18 cm], ending with a WS row. Cast off.

Block II (make 3 each with A and B). With pair of needles, cast on 41 sts.

Proceed in Parallelogram St Pat as follows:

1st row: P1. *K5. P5. Rep from * to end of row.

2nd row: K4. *P5. K5. Rep from * to last 7 sts. P5. K2.

3rd row: P3. *K5. P5. Rep from * to last 8 sts. K5. P3.

4th row: K2. *P5. K5. Rep from * to last 9 sts. P5. K4.

5th row: *P5. K5. Rep from * to last st. P1.

6th row: As 5th row.

Rep 1st to 6th rows of Parallelogram St Pat until work from beg measures 7" [18 cm], ending with a WS row. Cast off.

MATERIALS

Bernat® Super Value™ (7 oz/197 g; 426 yds/389 m)

Contrast A Navy (07711) **3 balls**

Contrast B Steel Blue Heather (53014) **3 balls**

Size U.S. 8 (5 mm) knitting needles. Size U.S. 7 (4.5 mm) circular knitting needle 36" [90 cm] long **or size needed to obtain gauge.**

Block III (make 3 each with A and B).
With pair of needles, cast on 43 sts.
Proceed in Triangles St Pat as follows:
1st row: K1. *P5. K1. Rep from * to end of row.
2nd row: P1. *K5. P1. Rep from * to end of row.
3rd row: K1. *K1. P3. K2. Rep from * to end of row.
4th row: P1. *P1. K3. P2. Rep from * to end of row.
5th row: K1. *K2. P1. K3. Rep from * to end of row.
6th row: P1. *P2. K1. P3. Rep from * to end of row.
7th row: As 6th row.
8th row: As 5th row.
9th row: As 4th row.
10th row: As 3rd row.
11th row: As 2nd row.
12th row: As 1st row.
Rep 1st to 12th rows of Triangles St Pat until work from beg measures 7" [18 cm], ending with a WS row. Cast off.

Block IV (make 6 with A).
With pair of needles, cast on 42 sts.
Proceed in Checks Pat as follows:
1st to 4th rows: K1. *K5. P5. Rep from * to last st. K1.
5th to 8th rows: P1. *P5. K5. Rep from * to last st. P1. Rep 1st to 8th rows of Checks Pat until work from beg measures 7" [18 cm], ending with a WS row. Cast off.

Block V (make 6 with B).
With pair of needles, cast on 41 sts.
Proceed in Ridged Pat as follows:
1st and 2nd rows: Knit.
3rd row: (RS). P1. *K1. P1. Rep from * to end of row.
4th row: K1. *P1. K1. Rep from * end of row.
5th and 6th rows: Knit.
7th row: As 4th row.
8th row: As 3rd row.
Rep 1st to 8th rows of Ridged Pat until work from beg measures 7" [18 cm], ending with a WS row. Cast off.

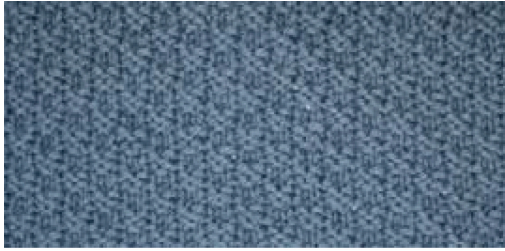
FINISHING

Sew blocks into Blanket as shown in Diagram on page 3.

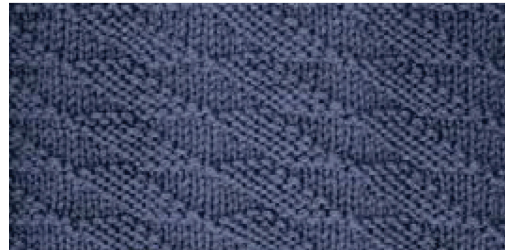
Side edging: With RS of work facing B and circular needle, pick up and knit 178 sts along side edge of Blanket. **Do not** join. Working back and forth across needle, knit 1 row. With A, knit 1 row.

Cast off knitwise (WS).
Rep for other side.

Top and bottom edging: With RS of work facing, B and circular needle, pick up and knit 202 sts along top edge of Blanket. **Do not** join. Working back and forth across needle, knit 1 row. With A, knit 1 row.
Cast off knitwise (WS).
Rep for bottom of Blanket.



BLOCK I



BLOCK II



BLOCK III



BLOCK IV



BLOCK V

IV	V	I	II	III
I	II	III	IV	V
IV	V	I	II	III
I	II	III	IV	V
IV	V	I	II	III
I	II	III	IV	V

Key

- = Block with A
- = Block with B