



INTERMEDIATE

MATERIALS

Bernat® Softee Chunky™ (Solids: 3.5 oz/100 g; 108 yds/99 m)
Grass (28223), **Ultra Blue** (28742) or **Natural** (28008)

Entire Set	6 balls
Mittens	1 ball
Cowl	5 balls
Hat	2 balls

Bernat® Softee Chunky™ (Ombres: 2.8 oz/80 g; 77 yds/70 m)
Kimono Ombre (29125)

Entire Set	6 balls
Mittens	2 balls
Cowl	6 balls
Hat	2 balls

Sizes U.S. 9 (5.5 mm), U.S. 10½ (6.5 mm) and U.S. 11 (8 mm) knitting needles **or size needed to obtain gauge**. Cable needle.

ABBREVIATIONS: www.yarnspirations.com/abbreviations

Alt = Alternate(ing)	then K3 from cable needle	Pssso = Pass slipped stitch over
Beg = Beginning	Cont = Continue(ity)	Rem = Remain(ing)
C6B = Slip next 3 stitches onto cable needle and leave at back of work. K3, then K3 from cable needle	Inc = Increase(ing)	Rep = Repeat
C6F = Slip next 3 stitches onto cable needle and leave at front of work. K3, then K3 from cable needle	K = Knit	Rnd(s) = Round(s)
Cr4F = Slip next stitch onto cable needle and leave at front of work. K3, then K1 from cable needle	K1tbl = Knit next stitch through back of loop	Sl1 = Slip next stitch knitwise
Cr4B = Slip next 3 stitches onto cable needle and leave at back of work. K1,	K2tog = Knit next 2 stitches together	Ssk = Slip next 2 stitches knitwise one at a time. Pass them back onto left-hand needle, then knit through back loops together
	Kfb = Increase 1 stitch by knitting into front and back of next stitch	St(s) = Stitch(es)
	P = Purl	Tog = Together
	P1tbl = Purl next stitch through back of loop	Yo = Yarn over
	P2(3)tog = Purl next 2(3) stitches together	WS = Wrong side
	Pat = Pattern	





BERNAT® CHILL CHASER SET | KNIT

MEASUREMENTS

Hat and Mittens: One size to fit average woman.

Cowl: Approx 15" [38 cm] wide x 59" [150 cm] around.

GAUGE

Mittens: 13 sts and 16 rows = 4" [10 cm] in stocking stitch with U.S. 10½ (6.5 mm) knitting needles.

Hat and Cowl: 11 sts and 14 rows = 4" [10 cm] with U.S. 11 (8 mm) knitting needles.

INSTRUCTIONS

MITTENS

RIGHT MITTEN

**With U.S. 9 (5.5 mm) needles, cast on 23 sts.

1st row: (RS). *K1. P1. Rep from * to last st. K1.

2nd row: *P1. K1. Rep from * to last st. P1. Rep last 2 rows (K1. P1) ribbing for 2½" [6 cm], inc 2 sts evenly across last WS row. 25 sts.

Change to U.S. 10½ (6.5 mm) needles.**

1st row: (RS). K2. P10. K13.

2nd row: P13. K1. *P3tog. (K1. P1. K1) all in next st. Rep from * once more. K1. P2.

3rd row: As 1st row.

4th row: P13. K1. *(K1. P1. K1) all in next

st. P3tog. Rep from * once more. K1. P2.

Last 4 rows form pat.

Work a further 4 rows in pat.

Shape thumb gusset: 1st row: (RS). Pat across 13 sts. (Kfb) twice.

Knit to end of row.

2nd and following alt rows: Work even in pat.

3rd row: Pat across 13 sts. Kfb. K2. Kfb. Knit to end of row.

5th row: Pat across 13 sts. Kfb. K4. Kfb. Knit to end of row. 31 sts.

6th row: As 2nd row.

Shape thumb: Next row: (RS). Pat across 21 sts. **Turn.** Leave rem sts on a spare needle.

*****Next row:** Cast on 1 st. P9 (including cast on st). **Turn.** Leave rem sts on a spare needle.

Next row: Cast on 1 st. K10 (including cast on st).

Work a further 5 rows in stocking st on these 10 sts.

Next row: (RS). (K2tog) 5 times. 5 sts.

Next row: (P2tog) twice. P1. 3 sts. Break yarn, leaving a long end. Draw end tightly through rem sts. Sew thumb seam.

Next row: (RS). Rejoin yarn. Pick up and knit 2 sts over cast on sts at base of thumb. Pat to end of row across sts from spare needle. 25 sts.***

Cont in pat until work from beg measures approx 9½" [24 cm], ending with the following pat row:

Last row: (WS). P13. K1. *P3tog. (K1. P1. K1) all in next st. Rep from * once more. K1. P2.

Shape top: 1st row: (RS). K2. P10. ssk. K2tog. K6. ssk. K1. 22 sts.

2nd row: P10. K2. (P3tog. K1) twice. P2. 18 sts.

3rd row: K2tog. (P2tog) 3 times. (K2tog) 5 times. 9 sts. Break yarn leaving a long end. Draw end tightly through rem sts. Sew side seam.

LEFT MITTEN

Work from ** to ** as given for Right Mitten.

1st row: (RS). K13. P10. K2.

2nd row: P2. K1. *P3tog. (K1. P1. K1) all in next st. Rep from * once more. K1. P13.

3rd row: As 1st row.

4th row: P2. K1. *(K1. P1. K1) all in next st. P3tog. Rep from * once more. K1. P13.

Last 4 rows form pat.

Work a further 4 rows in pat.

Shape thumb gusset: 1st row: (RS). Pat across 10 sts. (Kfb) twice.

Pat to end of row.

2nd and alt rows: Work even in pat.

3rd row: Pat across 10 sts. Kfb. K2. Kfb. Knit to end of row.

5th row: Pat across 10 sts. Kfb. K4. Kfb. Knit to end of row. 31 sts.

6th row: As 2nd row.

Shape thumb: Next row: (RS). Pat across 18 sts. **Turn.** Leave rem sts on a spare needle.

Work from *** to *** as given for Right Mitten.

Cont in pat until work from beg measures approx 9½" [24 cm], ending with the following pat row:

Last row: (WS). P2. K1. *P3tog. (K1. P1. K1) all in next st. Rep from * once more. K1. P13.

Shape top: 1st row: (RS). K1. K2tog. K6. K2tog. ssk. P10. K2. 22 sts.

2nd row: P2. K2. (P3tog. K1) twice. P10. 18 sts.

3rd row: (K2tog) 5 times. (P2tog) 3 times. K2tog. 9 sts. Break yarn, leaving a long end. Draw end tightly through rem sts. Sew side seam.



BERNAT CHILL CHASER SET | KNIT

COWL

Cable Panel (worked over 21 sts).

(See Chart I).

1st row: (RS). K6. P2. K2tog. yo. P1. yo. ssk.

P2. K6.

2nd row: P6. K2. P2. K1. P2. K2. P6.

3rd row: C6F. P2. yo. ssk. P1. K2tog. yo. P2.

C6B.

4th row: As 2nd row.

5th and 6th rows: As 1st and 2nd rows.

7th row: K6. P2. yo. ssk. P1. K2tog. yo. P2.

K6.

8th row: As 2nd row.

9th row: C6F. P2. K2tog. yo. P1. yo. ssk. P2.

C6B.

10th row: As 2nd row.

11th row: As 7th row.

12th row: (P2. K2) twice. P2. K1. (P2. K2) twice. P2.

13th row: yo. ssk. P2. K6. P1. K6. P2. K2tog. yo.

14th row: P2. K2. P6. K1. P6. K2. P2.

15th row: K2tog. yo. P2. C6B. P1. C6F. P2. yo. ssk.

16th row: As 14th row.

17th and 18th rows: As 13th and 14th rows.

19th row: K2tog. yo. P2. K6. P1. K6. P2. yo. ssk.

20th row: As 14th row.

21st row: yo. ssk. P2. C6B. P1. C6F. P2.

K2tog. yo.

22nd row: As 14th row.

23rd row: As 19th row.

24th row: As 12th row.

These 24 rows form Cable Panel pat.

With U.S. 11 (8 mm) needles, cast on 45 sts.

1st row: (RS). K2. P10. Work 1st row of Cable Panel across next 21 sts. P10. K2.

2nd row: K2. *P3tog. (K1. P1. K1) all in next st. Rep from * once more. K2. Work 2nd row of Cable Panel across next 21 sts. K2. **(K1. P1. K1) all in next st. P3tog. Rep from ** once more. K2.

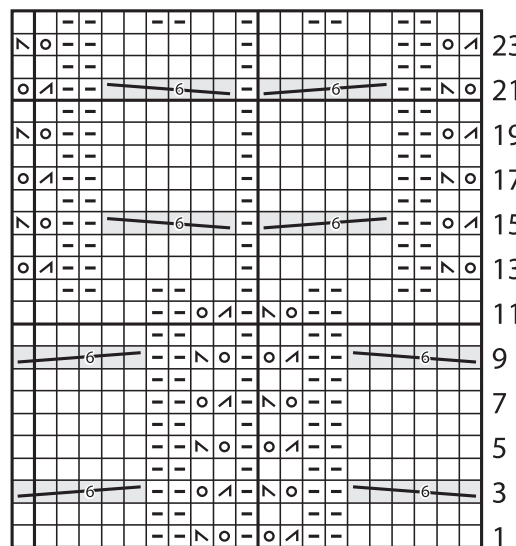
3rd row: K2. P10. Work 3rd row of Cable Panel across next 21 sts. P10. K2.

4th row: K2. *(K1. P1. K1) all in next st. P3tog. Rep from * once more. K2. Work 4th row of Cable Panel across next 21 sts. K2. **P3tog. (K1. P1. K1) all in next st. Rep from ** once more. K2.

These 4 rows form Trinity St pat. Cable Panel is now in position.

Cont in pat, keeping cont of Cable Panel, until work from beg measures approx 59" [150 cm] ending on a 10th row of Cable Panel pat. Cast off in pat. Sew cast on and cast off edges tog.

CHART I



Start Here

KEY

- = Knit on RS rows.
Purl on WS rows.
- ▣ = Purl on RS rows.
Knit on WS rows.



- = yo
- ⊞ = ssk
- ⊞ = K2tog

