



# AN ITALIAN STORY

*Ombra™*



## MILANO THROW

KNITTING



## WHAT YOU NEED

**RED HEART® Ombra™:** 10 balls 3341 Tempo

**Susan Bates® Knitting Needles:** 6 mm [US 10] circular needle, 36" [90 cm] long or longer

6 stitch markers, yarn needle.

**GAUGE:** 17 sts = about 4" [10 cm]; 22 rows = about 4" [10 cm] in Stockinette stitch (knit on right side, purl on wrong side).

**GAUGE IS NOT CRITICAL FOR THIS PROJECT. Use any size needles to obtain the gauge.**

**BUY YARN**



**RED HEART® Ombra™**, Art. R182 available in 3.5 oz (100 g), 249 yd (228 m) balls

Designed by Italian Story Design Team

**Bedcover measures about 56 x 60" [142 x 152.5 cm]**

### Notes

1. The throw is worked back and forth in rows from lower edge upwards.
2. To create a large textured square pattern, sections are worked in Garter stitch (knit every st), Stockinette stitch (knit on right side, purl on wrong side), and Double Moss stitch.
3. Stitch markers are used to separate the different sections. Use of stitch markers is optional. If you prefer to count stitches or can "read" your stitches, there is no need to use markers.
4. Circular needle is used to accommodate large number of stitches. Work back and forth on circular needle as if working with straight needles.
5. The throw can be worked by following the written instructions or reading the chart. Read right side rows of chart from right to left and wrong side rows from left to right. Note that the chart shows a reduced version of the throw. Refer to labels along lower and right edges of chart for number of stitches and rows to work in each section.

## THROW

Cast on 236 sts.

### Lower Garter Stitch Border

**Rows 1–4:** Knit.

**Row 5 (right side):** Knit.

**Row 6:** K4 (for Garter Stitch side border), place marker, purl to last 4 sts, place marker, k4 (for side border).

**Rows 7–42:** Repeat Rows 5 and 6 for 18 more times, slipping markers as you come to them.

Continue to slip markers as you come to them.

**Row 43 (right side):** K34, place marker, \*k1, p1; repeat from \* to last 34 sts, place marker, k34.

**Row 44:** K4, purl to next marker, \*k1, p1; repeat from \* to next marker, purl to last marker, k4.

**Row 45:** Knit to 2nd marker, \*p1, k1; repeat from \* to next marker, knit to end of row.

**Row 46:** K4, purl to next marker, \*p1, k1; repeat from \* to next marker, purl to last marker, k4.

**Rows 47–74:** Repeat Rows 43–46 for 7 more times.

**Rows 75 and 76:** Repeat Rows 43 and 44.

**Row 77 (right side):** Knit to 2nd marker, [p1, k1] 14 times, place marker, knit to 28 sts before next marker, place marker, [p1, k1] 14 times, knit to end of row.

**Row 78:** K4, purl to next marker, \*p1, k1; repeat from \* to next marker, purl to next marker, \*\*p1, k1; repeat from \*\* to next marker, purl to last marker, k4.

**Row 79:** Knit to 2nd marker, \*k1, p1; repeat from \* to next marker, knit to next marker, \*\*k1, p1; repeat from \*\* to next marker, knit to end of row.

**Row 80:** K4, purl to next marker, \*k1, p1; repeat from \* to next marker, purl to next marker, \*\*k1, p1; repeat from \*\* to next marker, purl to last marker, k4.

**Rows 81–260:** Repeat Rows 77–80 for 45 more times.

**Rows 261 and 262:** Repeat Rows 45 and 46.

**Rows 263–294:** Repeat Rows 43–46 for 8 times.

**Rows 295–332:** Repeat Rows 5 and 6 for 19 times.

**Rows 333–336:** Knit.

Bind off.

## FINISHING

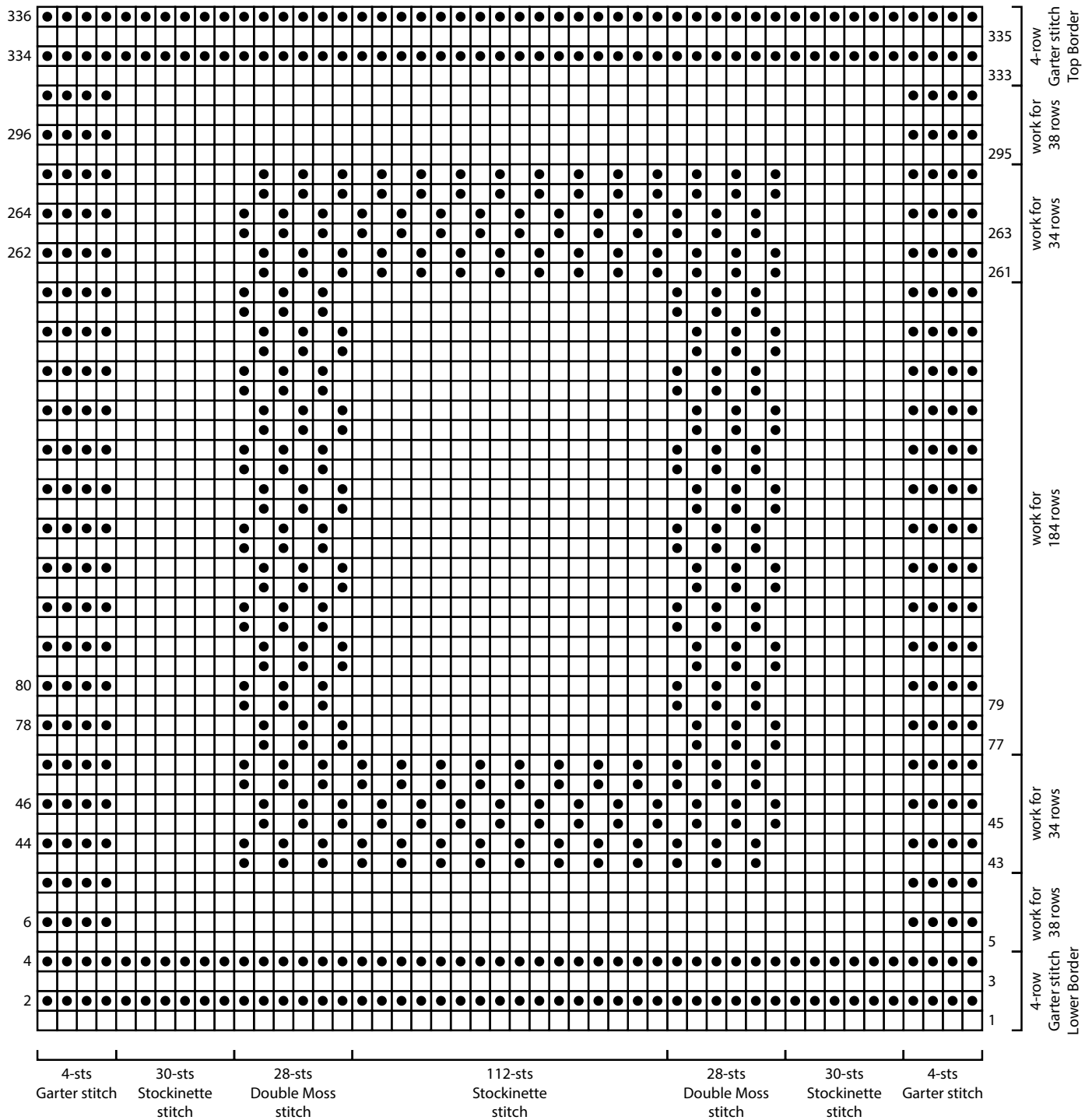
Weave in ends.

## ABBREVIATIONS

**k** = knit; **p** = purl; **st(s)** = stitch(es); **[ ]** = work directions in brackets the number of times specified; **\*** = repeat whatever follows the \* as indicated.

See next 2 pages for additional photos and chart.





**Note:** Chart shows a reduced version of the Milano Throw. Refer to labels along lower and right edge of chart for number of stitches and rows to work in each section.

**KEY**

- knit on right side, purl on wrong side
- purl on right side, knit on wrong side