

Version 1



Version 2



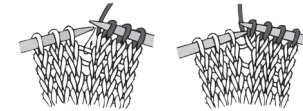
KNIT I SKILL LEVEL: INTERMEDIATE

## ABBREVIATIONS

**Beg** = Beginning  
**Inc** = Increase  
**K** = Knit  
**K2tog** = Knit next 2 stitches together

**M1** = Make 1 stitch by picking up horizontal loop lying before next stitch and knitting into back of loop

**P** = Purl  
**Rem** = Remain(ing)  
**Rep** = Repeat  
**Rnd(s)** = Round(s)  
**St(s)** = Stitch(es)



## MATERIALS

**Bernat® Premium™** (7 oz/198 g; 360 yds/329 m)

### Version 1

<b>Main Color (MC)</b> Aran (58500)	<b>1</b>	<b>ball</b>
<b>Contrast A</b> Navy (58522)	<b>1</b>	<b>ball</b>
<b>Contrast B</b> Teal (58517)	<b>1</b>	<b>ball</b>
<b>Contrast C</b> Magenta (58526)	<b>1</b>	<b>ball</b>

### Version 2

<b>Main Color (MC)</b> Navy (58522)	<b>1</b>	<b>ball</b>
<b>Contrast A</b> Aran (58500)	<b>1</b>	<b>ball</b>
<b>Contrast B</b> Botany Teal (58538)	<b>1</b>	<b>ball</b>
<b>Contrast C</b> Med Grey Heather (58505)	<b>1</b>	<b>ball</b>

Set of 4 sizes U.S. 7 (4.5 mm) and U.S. 8 (5 mm) double-pointed knitting needles **or size needed to obtain gauge.** Stitch marker.

## SIZE

One size to fit Adult.

## GAUGE

18 sts and 24 rows = 4" [10 cm] in stocking st with larger needles.

## INSTRUCTIONS

**Note:** When working from charts, carry yarn not in use loosely across WS of work but never over more than 5 sts. When it must pass over more than 5 sts, weave it over and under color in use on next st or at center point of sts it passes over. The colors are never twisted around one another.

With set of smaller double-pointed needles and MC, cast on 90 sts. Join in rnd. Divide sts onto 3 needles, placing marker on first st. Work 5½" [14 cm] in (K1. P1) ribbing.

Change to larger set of double-pointed needles and knit 3 rnds. **Next rnd:** \*K15. M1. Rep from \* around. 96 sts.

Knit Chart I to end of chart, *reading rnds from right to left* and noting 24-st rep will be worked 4 times. 72 sts rem. Chart I shown on page 2.

**Note:** On 19th rnd of Chart I, slip first st knitwise, work chart to last st, then knit last st and slipped st tog.

**Next rnd:** With MC, \*K4. K2tog. Rep from \* around. 60 sts.

**Next rnd:** With MC, knit.

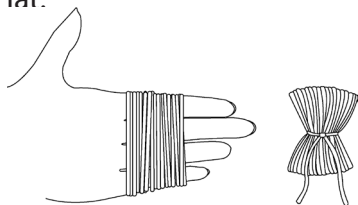
Knit Chart II to end of chart, *reading rnds from right to left* and noting 6-st rep will be worked 10 times. 50 sts rem.

**Next rnd:** With MC, \*K3. K2tog. Rep from \* around. 40 sts.

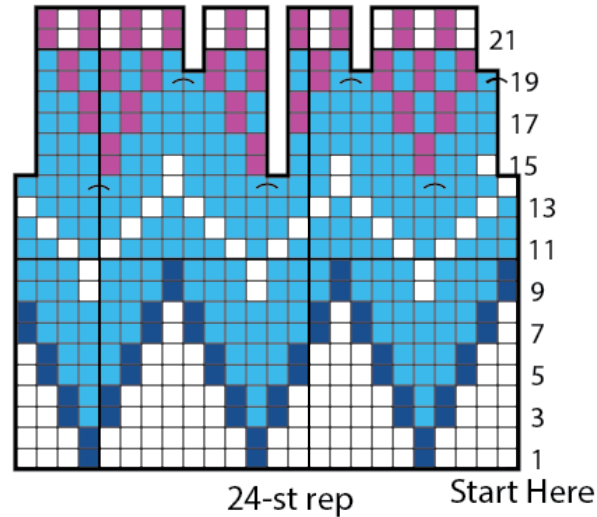
**Next rnd:** With MC, \*K2. K2tog. Rep from \* around. 30 sts.

**Next rnd:** With MC, \*K1. K2tog. Rep from \* around. 20 sts. Break yarn leaving a long end. Draw end tightly through rem sts.

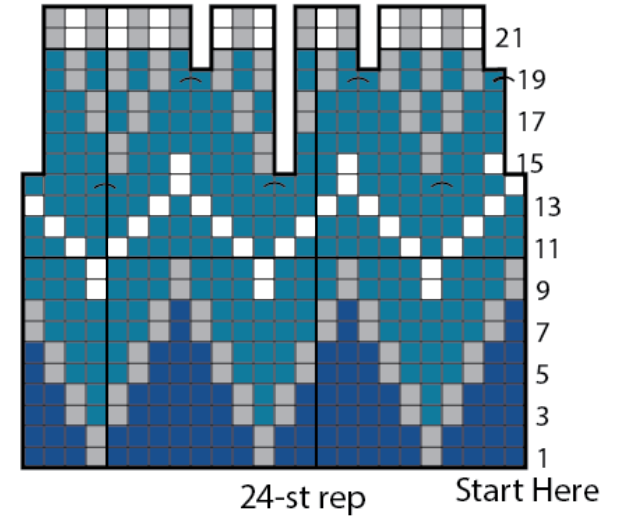
**Pompom:** Wind A around 4 fingers 100 times. Remove from fingers and tie tightly in center. Cut through each side of loops. Trim to a smooth round shape. Sew to top of Hat.



Version 1 - Chart I



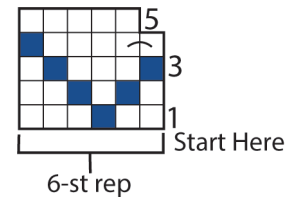
Version 2 - Chart I



Version 1 and 2 - Chart II

Version 1 - Key

- = Main Color (MC)
- = Contrast A
- = Contrast B
- = Contrast C
- ⊞ = K2tog



Version 2 - Key

- = Main Color (MC)
- = Contrast A
- = Contrast B
- = Contrast C
- ⊞ = K2tog